

Amendment 1 to Council Bill 65-2016

BY: Jon Weinstein

Legislative Day No: 16

Date: October 5, 2016

Amendment No. 1

1 *(This amendment would change the references to Tiber-Hudson Watershed to Tiber Branch*
2 *Watershed and replace Exhibit A with the attached map).*

3
4
5
6 On the title page, in line 2 of the title, strike “Tiber-Hudson” and substitute “Tiber
7 Branch”.

8
9 On page 2, in lines 17, 20, and 25, strike “Tiber-Hudson” and substitute “Tiber Branch”.

10 On the same page, in line 18, strike “outlined in red” and substitute
11 “highlighted”.

12
13 On page 3, in lines 3, 6, 13, 22, 26, and 31, strike “Tiber-Hudson” and substitute “Tiber
14 Branch”.

15
16 On page 4, in lines 3, 12, 15 and 16, 20, and 25, strike “Tiber-Hudson” and substitute
17 “Tiber Branch”.

18
19 On page 5, in line 8, strike “Tiber-Hudson” and substitute “Tiber Branch”.

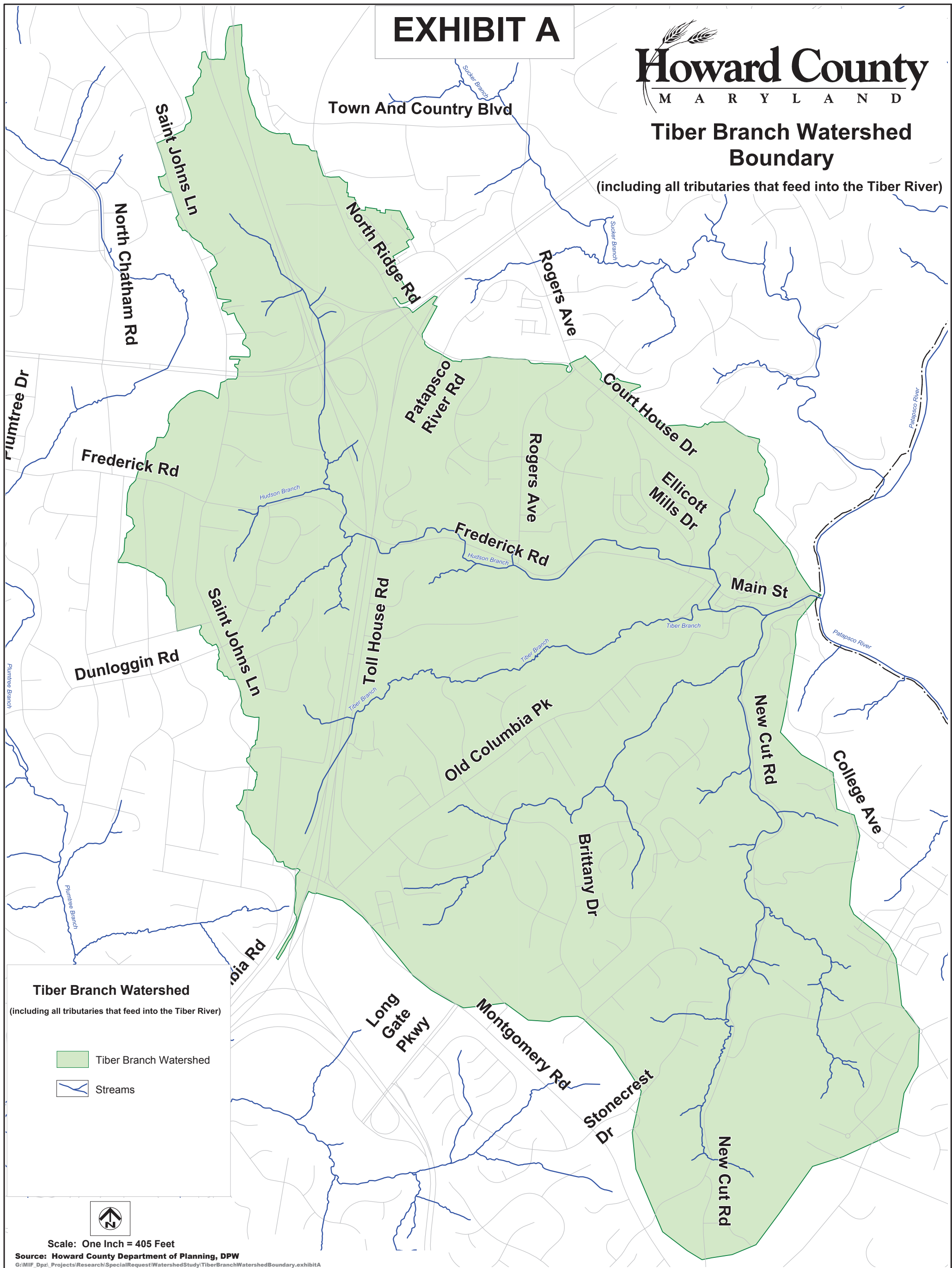
20
21 Remove Exhibit A attached to the bill and substitute the attached map entitled, “Tiber
22 Branch Watershed Boundary” for Exhibit A attached to the bill.

EXHIBIT A



Tiber Branch Watershed Boundary

(including all tributaries that feed into the Tiber River)



Tiber Branch Watershed
(including all tributaries that feed into the Tiber River)

- Tiber Branch Watershed
- Streams



Scale: One Inch = 405 Feet

Source: Howard County Department of Planning, DPW

G:\MIF_Dpzi_Projects\Research\SpecialRequest\WatershedStudy\TiberBranchWatershedBoundary.exhibitA