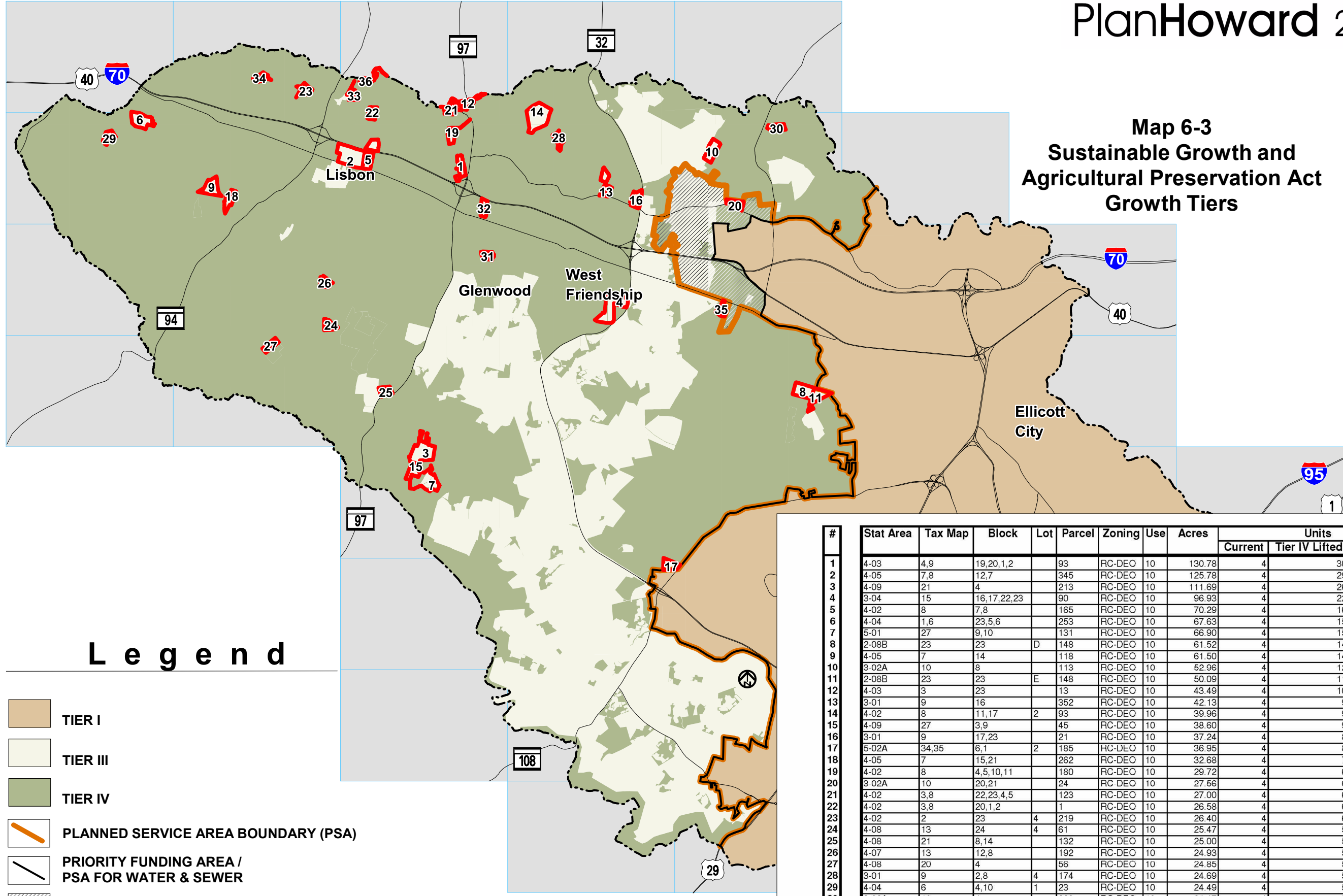


**Map 6-3
Sustainable Growth and
Agricultural Preservation Act
Growth Tiers**



Legend

- TIER I
- TIER III
- TIER IV
- PLANNED SERVICE AREA BOUNDARY (PSA)
- PRIORITY FUNDING AREA / PSA FOR WATER & SEWER
- WATER SERVICE ONLY AREA
- PROPERTIES THAT WOULD MOVE FROM TIER IV TO TIER III

GIS Source: Howard County DPZ, 2017.

#	Stat Area	Tax Map	Block	Lot	Parcel	Zoning	Use	Acres	Units		
									Current	Tier IV Lifted	Added Cap
1	4-03	4,9	19,20,1,2		93	RC-DEO	10	130.78	4	30	26
2	4-05	7,8	12,7		345	RC-DEO	10	125.78	4	29	25
3	4-09	21	4		213	RC-DEO	10	111.69	4	26	22
4	3-04	15	16,17,22,23		90	RC-DEO	10	96.93	4	22	18
5	4-02	8	7,8		165	RC-DEO	10	70.29	4	16	12
6	4-04	1,6	23,5,6		253	RC-DEO	10	67.63	4	15	11
7	5-01	27	9,10		131	RC-DEO	10	66.90	4	15	11
8	2-08B	23	23	D	148	RC-DEO	10	61.52	4	14	10
9	4-05	7	14		118	RC-DEO	10	61.50	4	14	10
10	3-02A	10	9		113	RC-DEO	10	52.96	4	12	8
11	2-08B	23	23	E	148	RC-DEO	10	50.09	4	11	7
12	4-03	3	23		13	RC-DEO	10	43.49	4	10	6
13	3-01	9	16		352	RC-DEO	10	42.13	4	9	5
14	4-02	8	11,17	2	93	RC-DEO	10	39.96	4	9	5
15	4-09	27	3,9		45	RC-DEO	10	38.60	4	9	5
16	3-01	9	17,23		21	RC-DEO	10	37.24	4	8	4
17	5-02A	34,35	6,1	2	185	RC-DEO	10	36.95	4	8	4
18	4-05	7	15,21		262	RC-DEO	10	32.68	4	7	3
19	4-02	8	4,5,10,11		180	RC-DEO	10	29.72	4	6	2
20	3-02A	10	20,21		24	RC-DEO	10	27.56	4	6	2
21	4-02	3,8	22,23,4,5		123	RC-DEO	10	27.00	4	6	2
22	4-02	3,8	20,1,2		1	RC-DEO	10	26.58	4	6	2
23	4-02	2	23	4	219	RC-DEO	10	26.40	4	6	2
24	4-08	13	24	4	61	RC-DEO	10	25.47	4	5	1
25	4-08	21	8,14		132	RC-DEO	10	25.00	4	5	1
26	4-07	13	12,8		192	RC-DEO	10	24.93	4	5	1
27	4-08	20	4		56	RC-DEO	10	24.85	4	5	1
28	3-01	9	2,8	4	174	RC-DEO	10	24.69	4	5	1
29	4-04	6	4,10	1	23	RC-DEO	10	24.49	4	5	1
30	3-02A	10	4		228	RC-DEO	10	24.47	4	5	1
31	4-06	14	6,12		43	RC-DEO	10	24.08	4	5	1
32	4-06	8	24		109	RC-DEO	10	23.97	4	5	1
33	4-02	2	24	3	39	RC-DEO	10	22.70	4	5	1
34	4-02	2	16		26	RC-DEO	10	22.50	4	5	1
35	3-06A	16	14,20		41	RC-DEO	10	22.17	4	5	1
36	4-02	3	13,14	1	6	RC-DEO	10	21.90	4	5	1
TOTAL					Number of Parcels - 36			Acres - 1,615.60	144	359	215