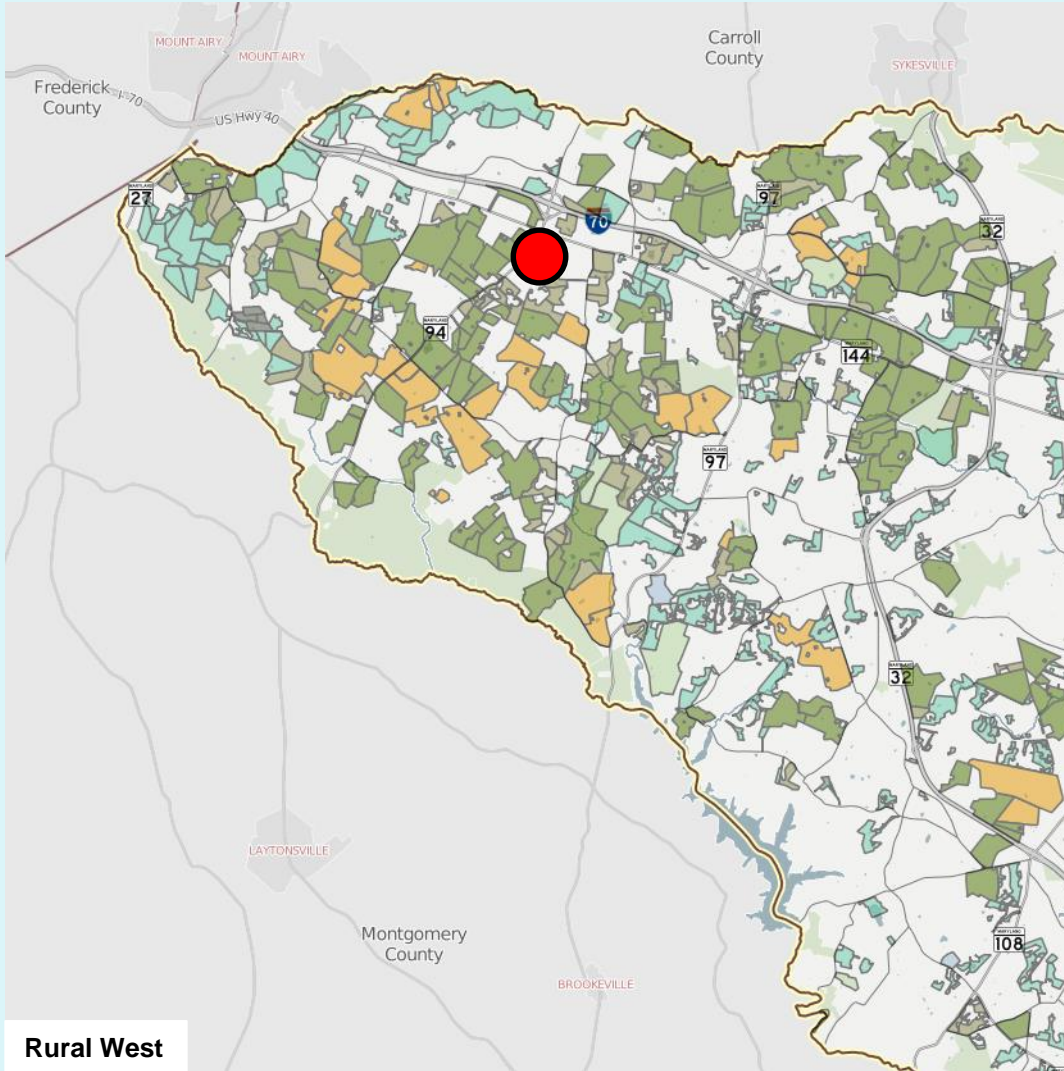


Howard County Agricultural Land Preservation Program

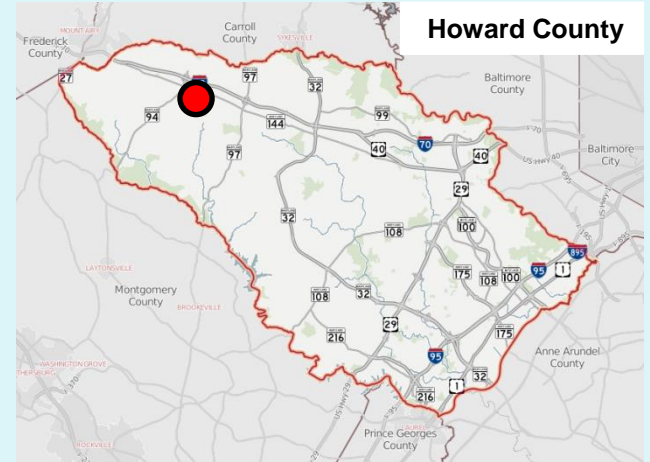
*Staff testimony on the easement acquisition of the
Sachs property*

Joy Levy, Program Administrator

Property Location



Rural West



Legend

- Property Location
- ALPP*, County Purchased Easements
- MALPF**, State Purchased Easements
- ALPP*, Dedicated Preservation Easements
- Rural Legacy Easements
- Environmental Preservation Easements
- Other Environmental & Conservation Easements
- Maryland Historical Trust Easements
- Parks & Open Space
- Institutional Land Uses

* (ALPP) Agricultural Land Preservation Program

** (MALPF) Maryland Agricultural Land Preservation Foundation

Adjacency to Preserved Land

Sachs property
1401 Woodbine Road
Woodbine, MD 21797

