

County Council Of Howard County, Maryland

2012 Legislative Session

Legislative Day No. 14

Resolution No. 172 -2012

Introduced by: The Chairperson at the request of the County Executive

A RESOLUTION adding certain sites to the Cemeteries and Grave Sites Inventory.

Introduced and read first time _____, 2012.

By order _____
Stephen LeGendre, Administrator

Read for a second time at a public hearing on _____, 2012.

By order _____
Stephen LeGendre, Administrator

This Resolution was read the third time and was Adopted___, Adopted with amendments___, Failed___, Withdrawn___, by the County Council
on _____, 2012.

Certified By _____
Stephen LeGendre, Administrator

NOTE: [[text in brackets]] indicates deletions from existing law; TEXT IN ALL CAPITALS indicates additions to existing law; Strike-out indicates material deleted by amendment; Underlining indicates material added by amendment

1 **WHEREAS**, the Cemetery Preservation Act of Howard County (the “Act”) is codified at
2 Title 16, Subtitle 13 of the Howard County Code and its purpose is to foster the preservation of
3 cemeteries and burial grounds in the County; and
4

5 **WHEREAS**, Section 16.1303 of the Act provides that the Department of Planning and
6 Zoning (the “Department), in cooperation with the Cemetery Preservation Advisory Board (the
7 “Board”), shall propose, and the County Council shall establish, an inventory of all known
8 cemeteries in the County, together with a description of the geographical location of each and a
9 record of the owners of each burial ground; and
10

11 **WHEREAS**, by passage of Council Resolution No.47-1994, the Department, in
12 cooperation with the Board, proposed the original Cemeteries and Grave Sites Inventory (the
13 “Inventory”), and the County Council approved the Inventory on May 2, 1994; and
14

15 **WHEREAS**, in order to continue to fulfill the purpose of the Act, it is necessary to
16 amend the Inventory from time to time; and
17

18 **WHEREAS**, by passage of Council Resolution No. 81-2001, the County Council
19 approved an addition to the Inventory; and
20

21 **WHEREAS**, the Department, in cooperation with the Board, has again proposed to add
22 certain sites to the Inventory and those additional site are shown on the attached list and maps.
23

24 **NOW, THEREFORE, BE IT RESOLVED** by the County Council of Howard County,
25 Maryland, this _____ day of _____, 2012, that the County Council approves
26 the addition to the Howard County Cemeteries and Grave Sites Inventory of the sites shown on
27 the list and maps attached to this Resolution.

Proposed 2012 Amendments to the Howard County Cemeteries and Gravesites Inventory

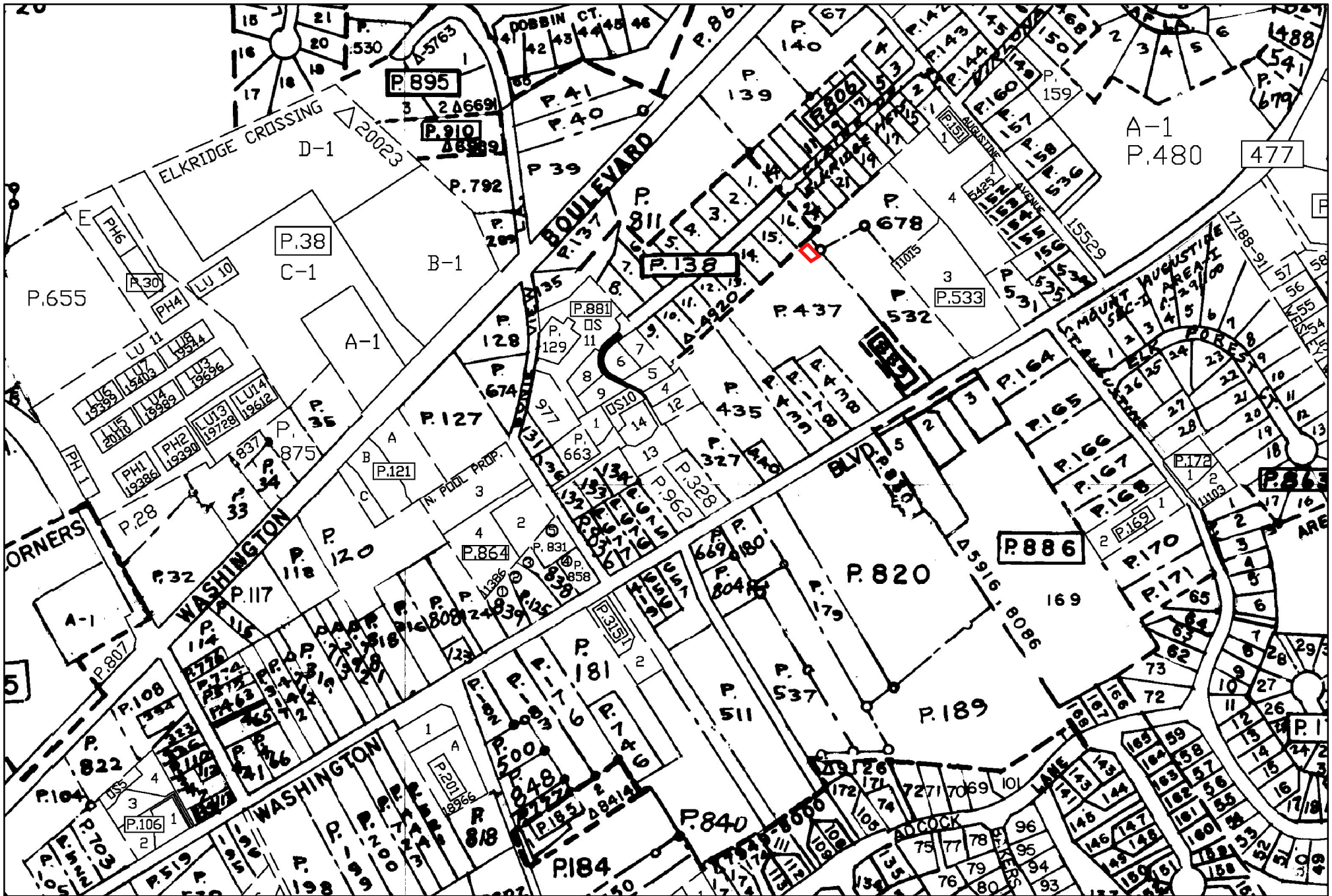
Ho.Co. ID #	Cemetery Name	Legal Description	Address	Size of Parcel	Source of Cemetery Information	Other ID #	Method of Confirmation	Historic Sites Survey No.	Comments
40-7	Roberts/Burkett/Dorsey/Hall Family Cemetery	Tax Map 40, Parcel 51; Liber 89, Folio 111, Plat 8779-1	6865 Haviland Mill Road, Clarksville	0.25 acre	research compiled by Remus Lyles				
34-10	Nichols Cemetery	Tax Map 34, Grid 19, Parcel 62	Haviland Mill Rd (address approx. 6600 Haviland Mill Road), Clarksville	62.44 acres	research compiled by Joseph Nichols; approx 6 graves, likely more				
38-8	South Point	Tax Map 38, Parcel 437; non-buildable parcel A; Plat Number 21390	6084 Old Washington Road	500 square feet	2 gravesites, cemetery discovered in 1850 deed, located on northwest corner of Lot 4 of F-10-054 with a 10 foot private cemetery access easement				
38-9	Anderson Cemetery	Tax Map 38, Grid 14, Parcel 1001; Liber 11592, Folio 00127	Ryan Avenue (corner of Ryan Ave and Mound Street)	6,814 square feet	1 gravesite; Howard County Real Estate Services and Recreation and Parks				



Roberts/Burkett/Dorsey/Hall Family Cemetery

2012 Cemetery Updates

Tax Map 40, Parcel 51



South Point Cemetery
 2012 Cemetery Updates
 Tax Map 38, Parcel 437
 Non-buildable Parcel A



Disclaimer: Howard County, Maryland assumes no responsibility for the accuracy of this map or the information contained herein or derived therefrom. The user assumes all risks and liabilities whatsoever resulting from or arising out of the use of this map. There are no oral agreements or warranties relating to the use of this map. Source: Howard County Department of Planning and Zoning 11/14/08



Anderson Cemetery
 2012 Cemetery Updates
 Tax Map 38, Parcel 1001

Disclaimer: Howard County, Maryland assumes no responsibility for the accuracy of this map or the information contained herein or derived therefrom. The user assumes all risks and liabilities whatsoever resulting from or arising out of the use of this map. There are no oral agreements or warranties relating to the use of this map. Source: Howard County Department of Planning and Zoning 11/14/08

