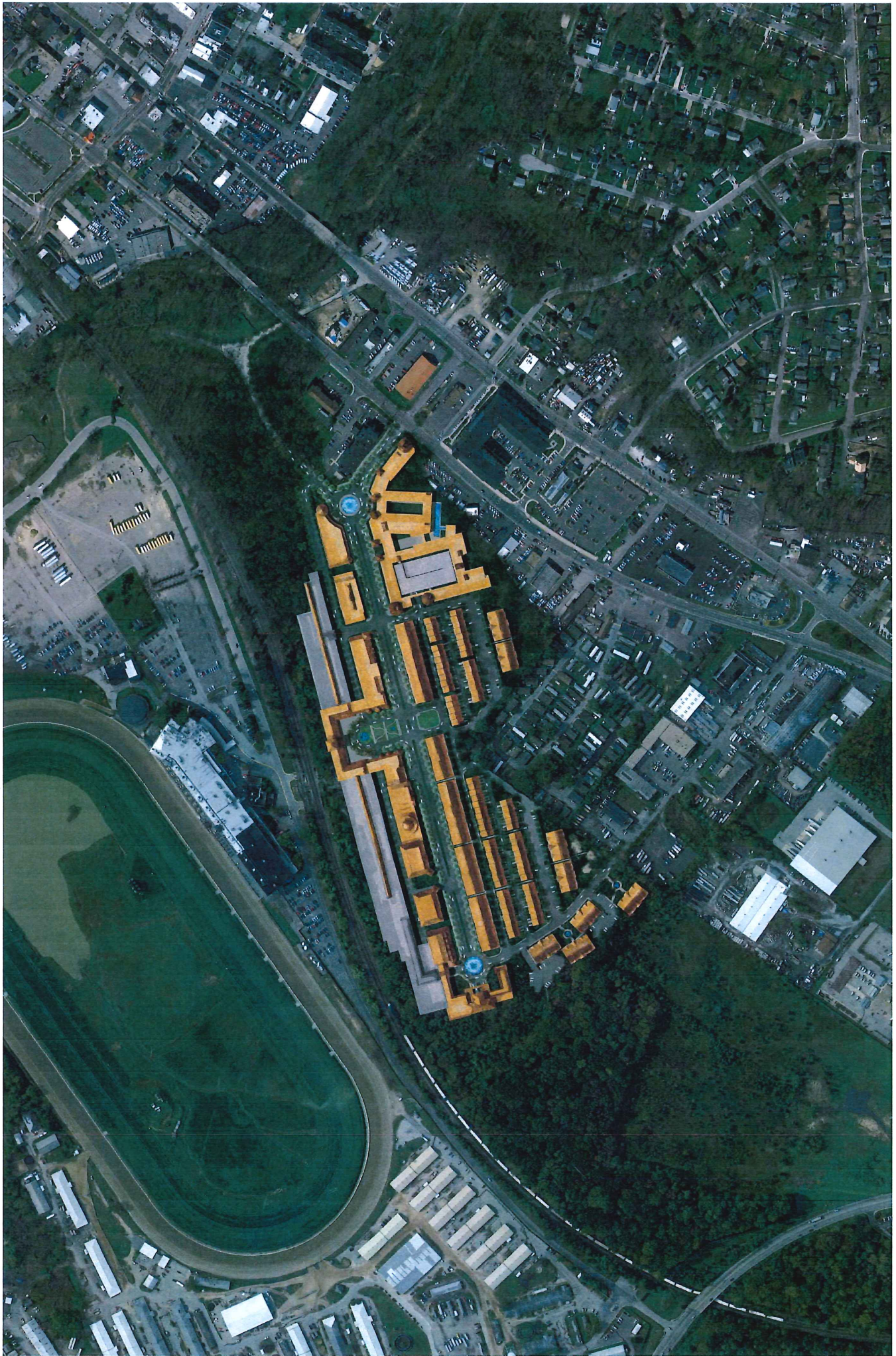


CR 111 - 2017













**Laurel Park Station** - Transit oriented mixed use development to contain 1,000 residential units (mixture of apartments, condominiums and townhouses), 650,000 square feet of office space and 127,000 square feet of retail space approved under Sketch Plan, S-10-004 on 08/03/2010. The project will be phased.

- **Located** along the eastern side of U.S. Route 1 at the Howard, Prince Georges and Anne Arundel County lines and adjacent to the CSX railroad and the MARC Station.
- **Developer** – MI Developments (Maryland), Incorporated
- **Phase Status:**

**Phase 1, SDP-15-043.** DPZ issued a Technically Complete (TC) letter on April 6, 2017. The due date for submitting SDP originals for signature approvals is **October 3, 2017**. Phase 1 includes 64 rental apartments and 156 two-over-two, rental, stacked townhouse units for a total of 220 units.

**F-16-013, Final Plat.** DPZ issued a TC letter on April 5, 2017. On **June 12, 2017**, a 60-day extension for F-16-013 was granted. The new deadlines for F-16-013 are: Water and Sewer construction plans by **August 3, 2017**; Completion of Developer's Agreement by **October 2, 2017**, and Submission of Original Final Plat for Signatures and Recording by **December 1, 2017**.

**Phase 2, SDP-15-063, Revised Plan Status** - under WP-17-080. DPZ extended the revised plan resubmission deadline to **September 9, 2017**. Phase 2 includes 280 apartment units and 12,003 square feet of retail floor area space.

**Phase 3** - Site development plan and final plat submission APFO Milestone due date was extended under WP-17-080 to **February 12, 2018**. This phase will include 255 residential units.

**Phase 4** – Site development plan and final plat submission APFO Milestone due date was extended under WP-17-080 to **April 1, 2018**. This phase will include 250 residential units.

- **Phases 3 and 4 – Commercial/Retail uses** - The site development plan for the 650,000 square feet of office space and remaining 114,997 square feet of retail space will be submitted with Phases 3 and 4.