



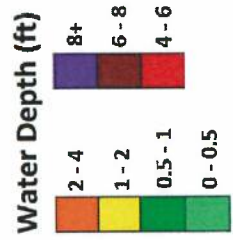
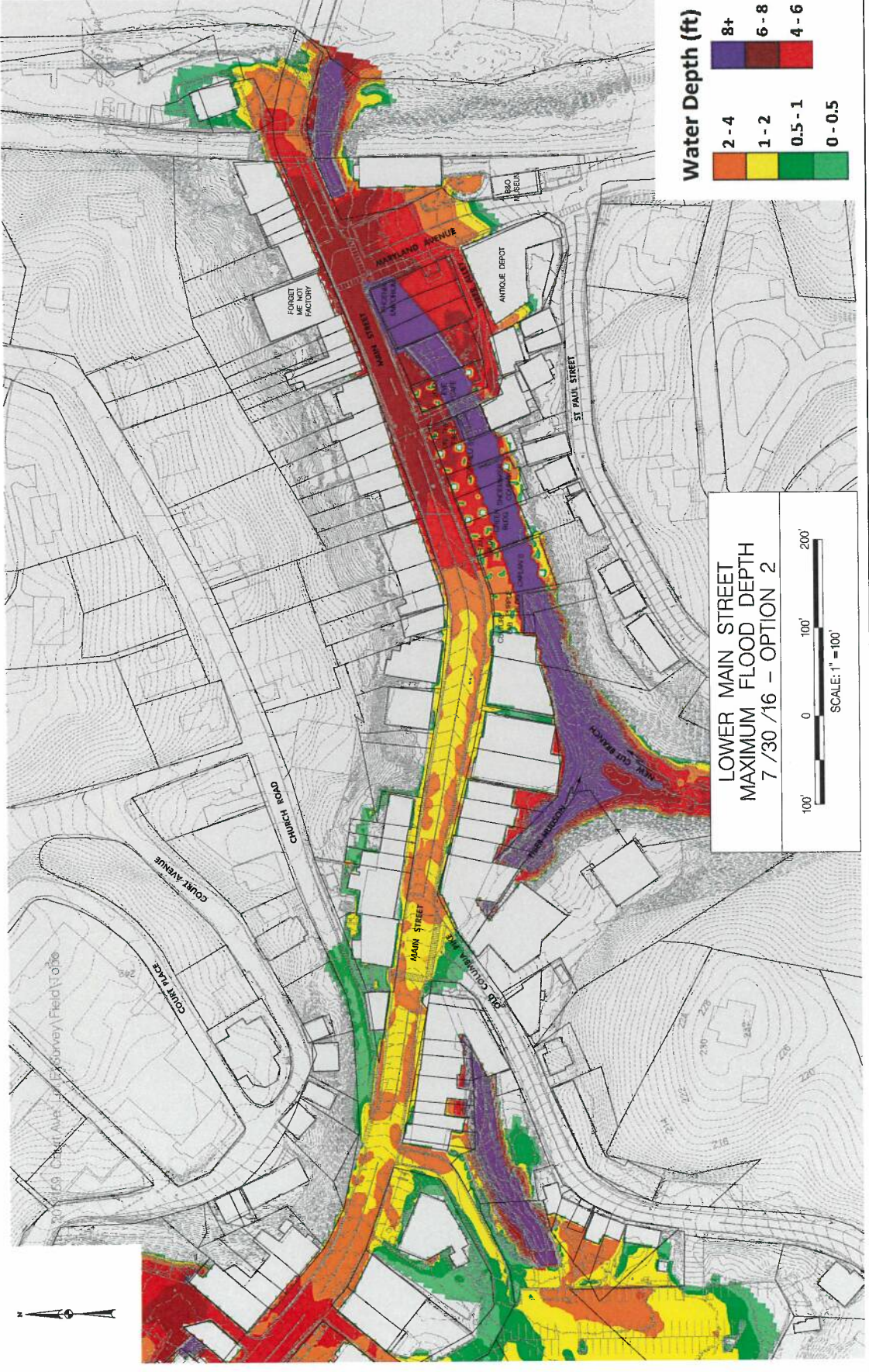
**LOWER MAIN STREET
MAXIMUM FLOOD DEPTH
7 /30 /16 – OPTION 1**

100' 0 100' 200'
SCALE: 1" = 100'

Water Depth (ft)

2 - 4
1 - 2
0.5 - 1
0 - 0.5

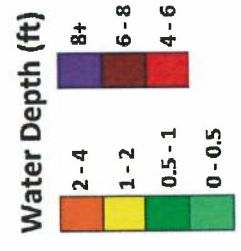
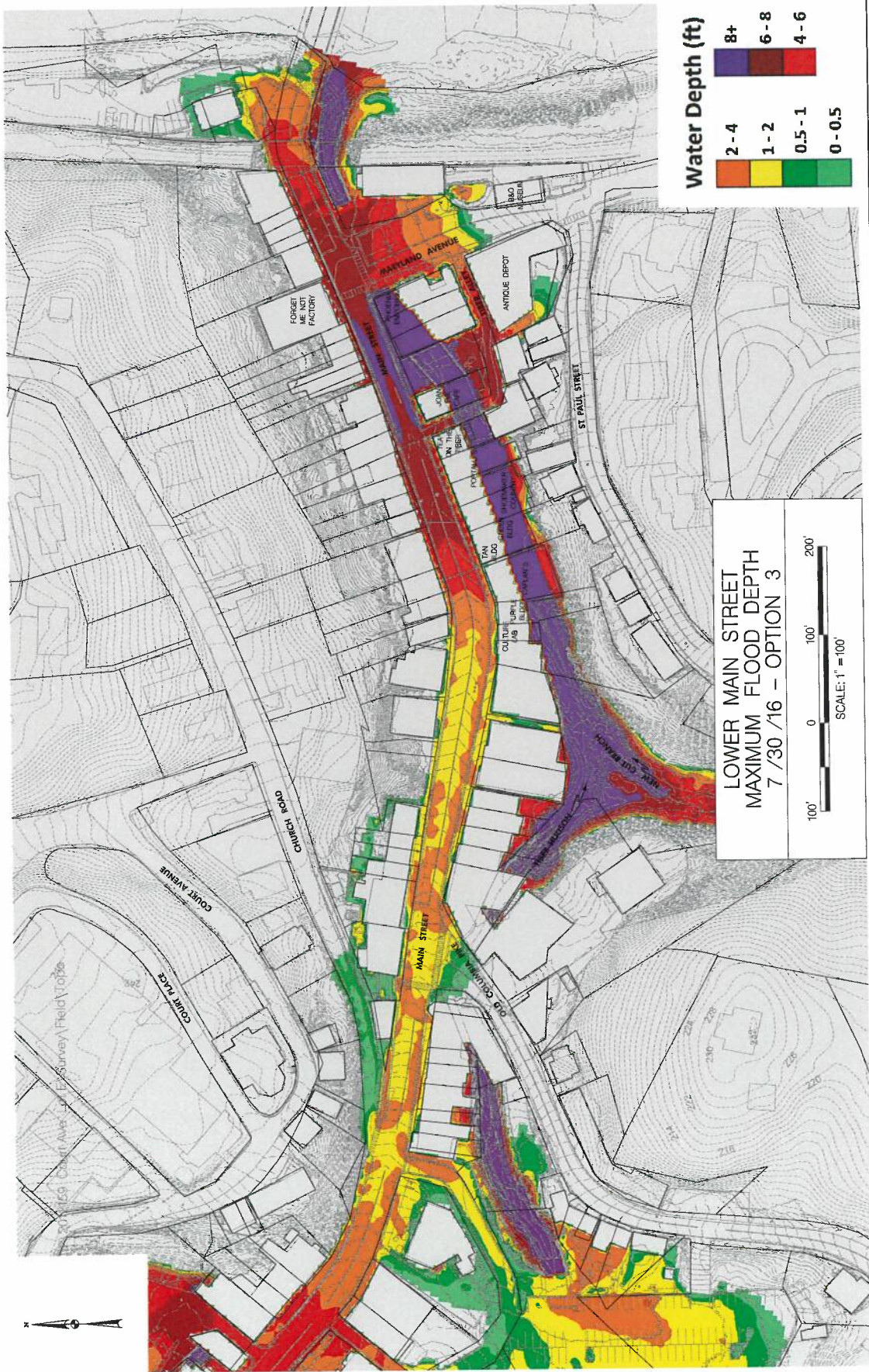
8+
6 - 8
4 - 6



**LOWER MAIN STREET
MAXIMUM FLOOD DEPTH
7/30/16 - OPTION 2**

100' 0 100' 200'
SCALE: 1" = 100'





LOWER MAIN STREET
 MAXIMUM FLOOD DEPTH
 7 / 30 / 16 - OPTION 3



C:\Users\Surveyor\fieldnotes

COURT PLACE

COURT AVENUE

CHURCH ROAD

MAIN STREET

DOUGLASS AVENUE

MAIN STREET

MAIN STREET

MAIN STREET

MAIN STREET

MAIN STREET

MAIN STREET

MAIN STREET

MAIN STREET

MAIN STREET

MAIN STREET

MAIN STREET

MAIN STREET

FORSETT ICE MFG FACTORY

ANTIQUE DEPOT

ST PAUL STREET

ST PAUL STREET

ST PAUL STREET

ST PAUL STREET

ST PAUL STREET

ST PAUL STREET

ST PAUL STREET

ST PAUL STREET

ST PAUL STREET

ST PAUL STREET

ST PAUL STREET

ST PAUL STREET

ST PAUL STREET

ST PAUL STREET

ST PAUL STREET

ST PAUL STREET

ST PAUL STREET

ST PAUL STREET

ST PAUL STREET

ST PAUL STREET

ST PAUL STREET

ST PAUL STREET

ST PAUL STREET

ST PAUL STREET

ST PAUL STREET

ST PAUL STREET

ST PAUL STREET

ST PAUL STREET

ST PAUL STREET

ST PAUL STREET

ST PAUL STREET

ST PAUL STREET

ST PAUL STREET

ST PAUL STREET

ST PAUL STREET

ST PAUL STREET

ST PAUL STREET

ST PAUL STREET

ST PAUL STREET

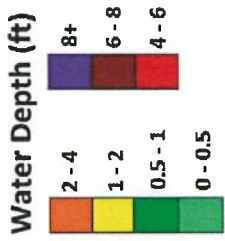
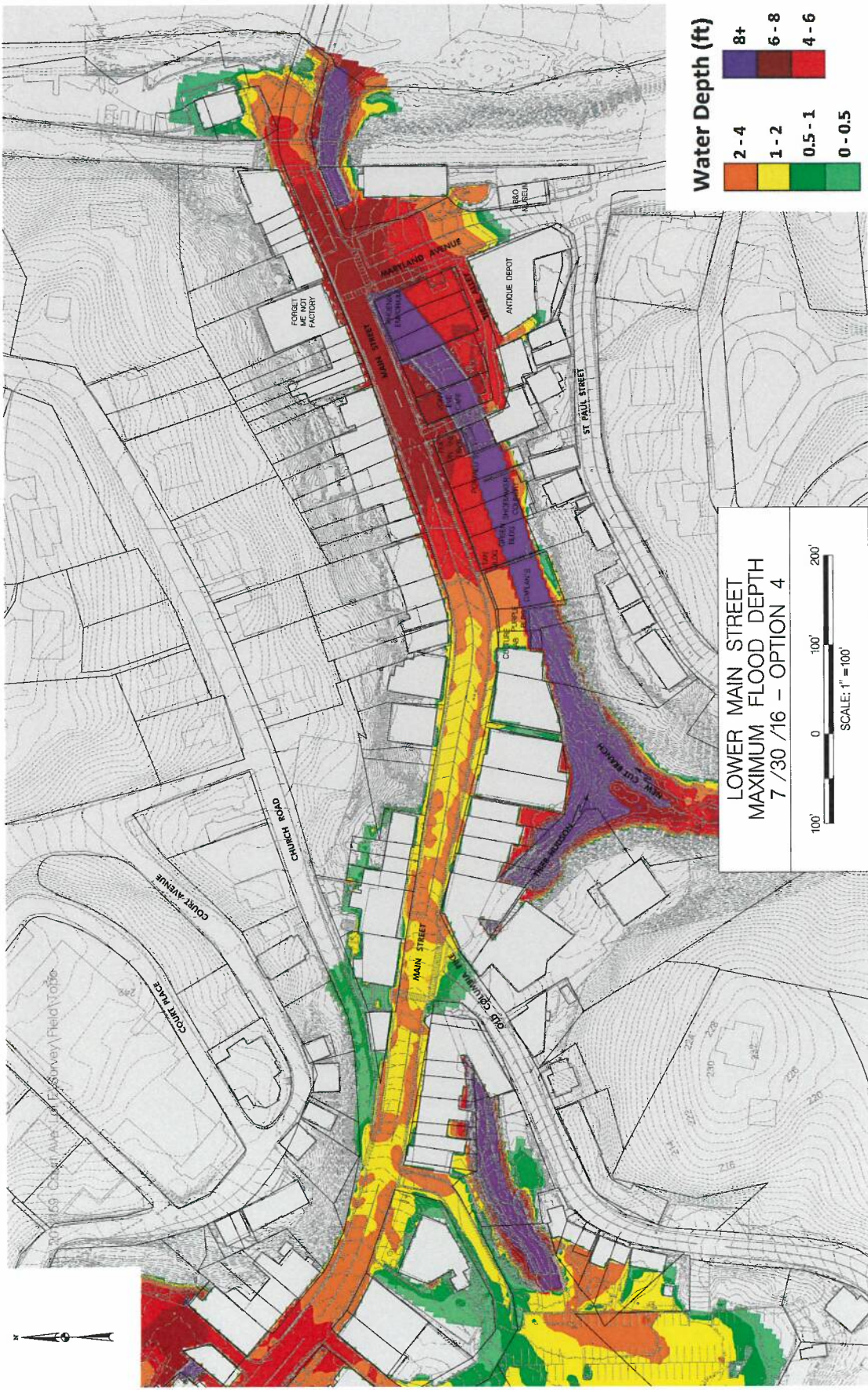
ST PAUL STREET

ST PAUL STREET

ST PAUL STREET

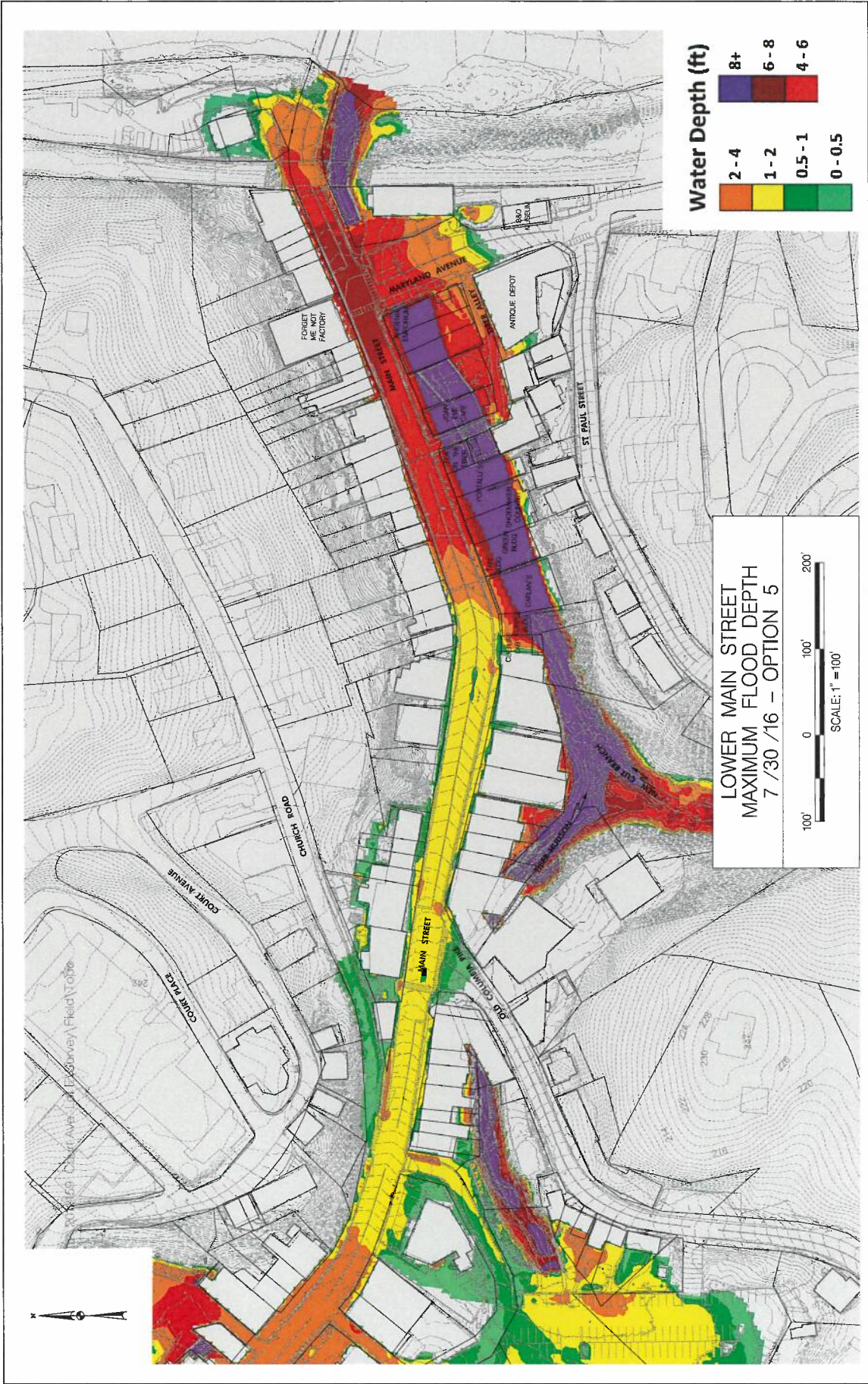
ST PAUL STREET

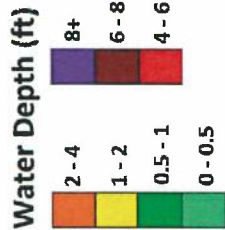
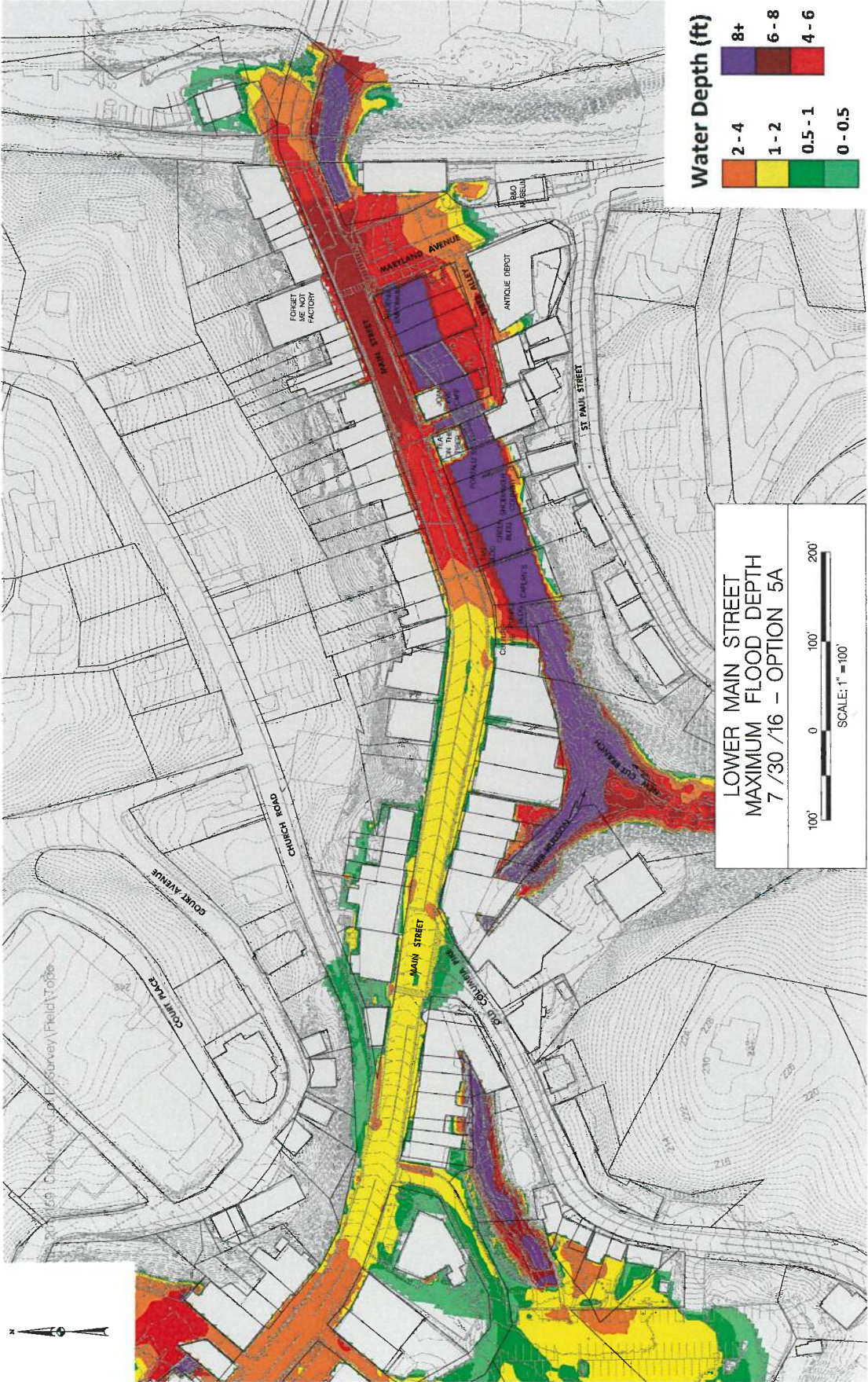
ST PAUL STREET



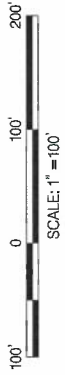
**LOWER MAIN STREET
MAXIMUM FLOOD DEPTH
7 / 30 / 16 - OPTION 4**







**LOWER MAIN STREET
MAXIMUM FLOOD DEPTH
7 / 30 / 16 - OPTION 5A**



159 Civil and Survey Field Topo

COURT AVENUE

CHURCH ROAD

MAIN STREET

ST. PAUL STREET

MARYLAND AVENUE

ANTIQUE DEPOT

840
MEBELL

ST. PAUL STREET

ST. PAUL STREET

ST. PAUL STREET

ST. PAUL STREET

ST. PAUL STREET

ST. PAUL STREET

ST. PAUL STREET

ST. PAUL STREET

ST. PAUL STREET

ST. PAUL STREET

ST. PAUL STREET

ST. PAUL STREET

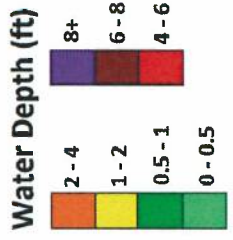
ST. PAUL STREET

ST. PAUL STREET

ST. PAUL STREET

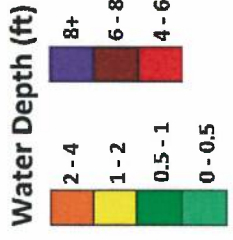
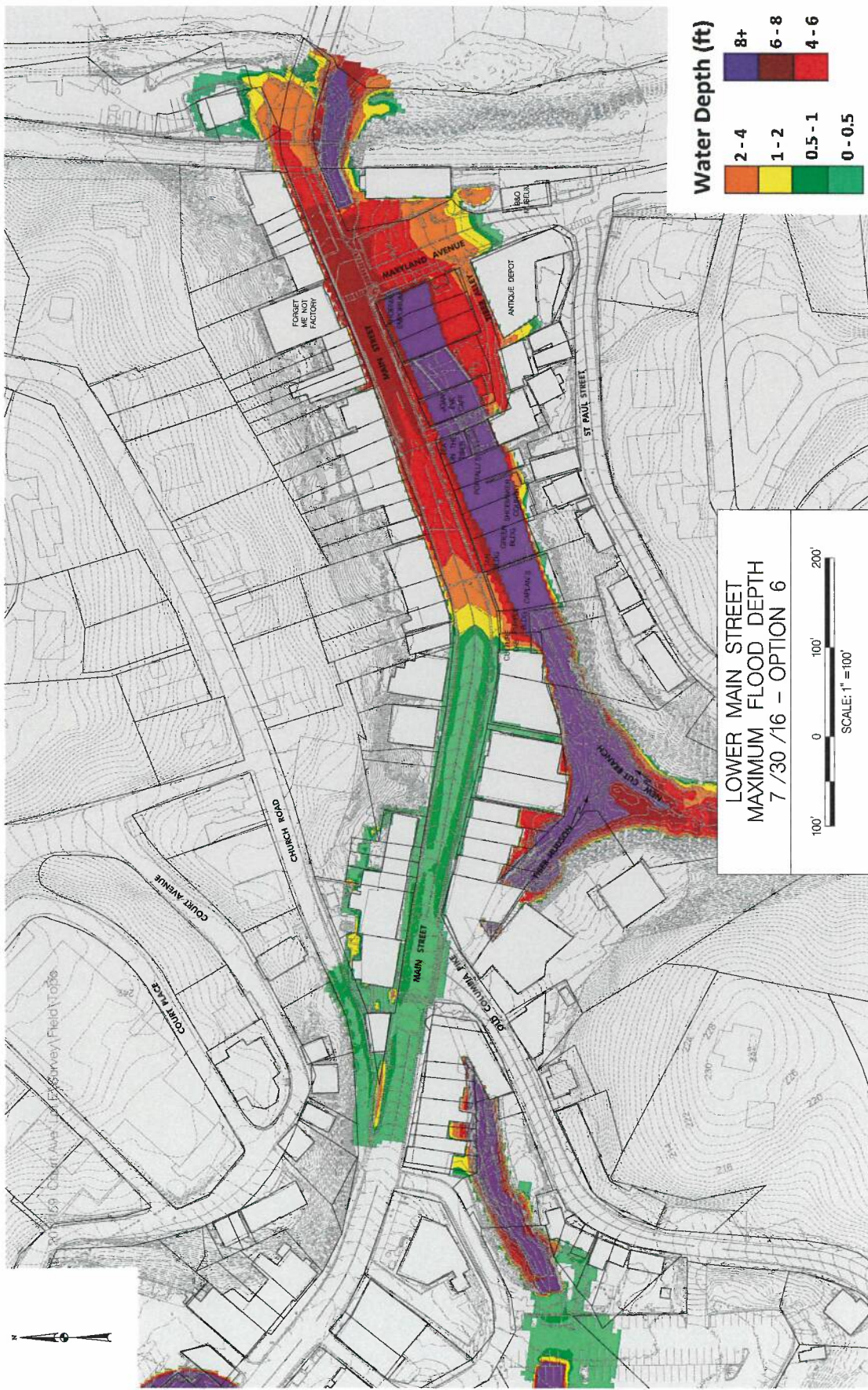
ST. PAUL STREET

ST. PAUL STREET



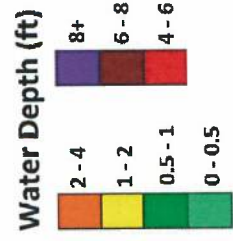
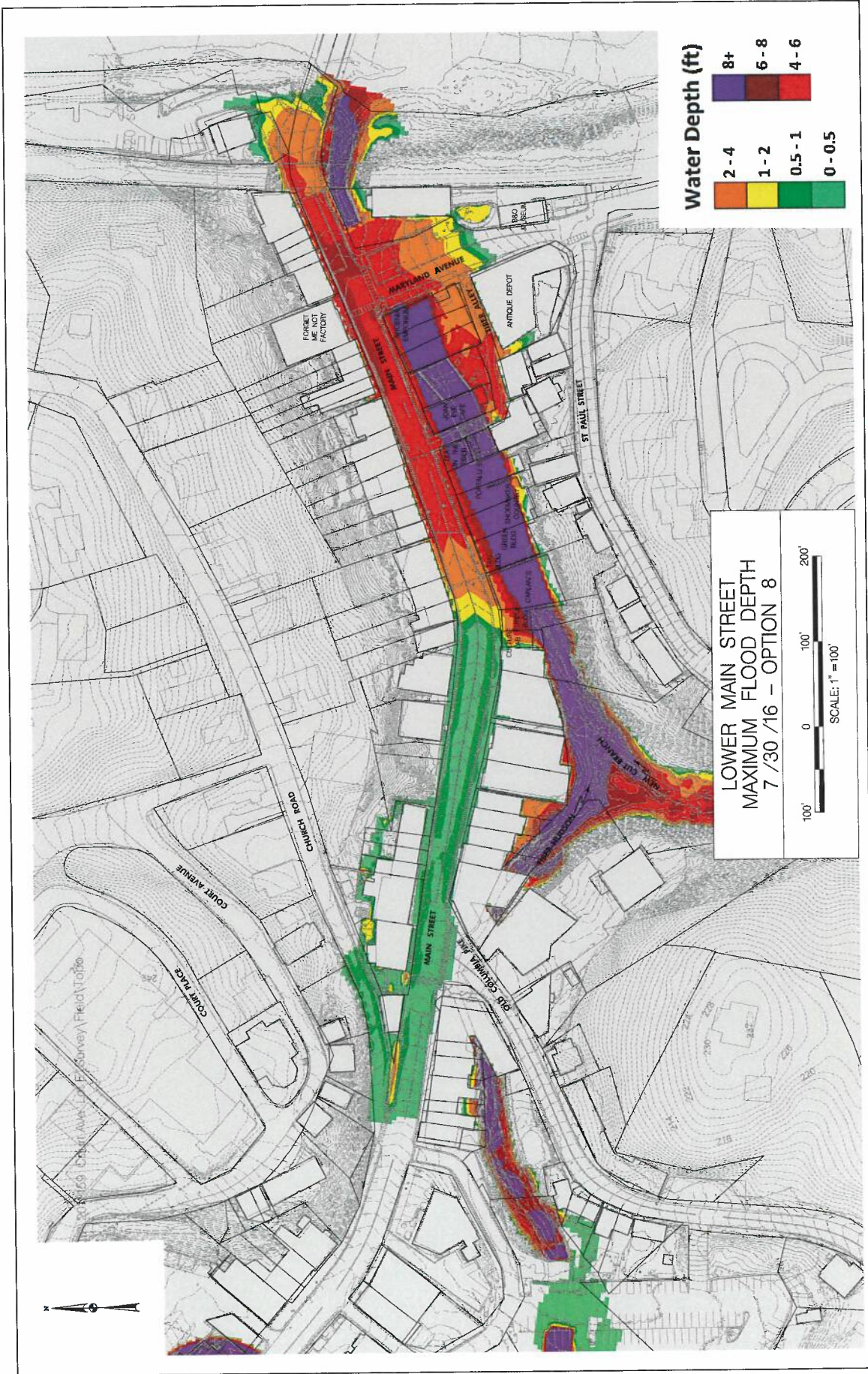
**LOWER MAIN STREET
MAXIMUM FLOOD DEPTH
7 / 30 / 16 - OPTION 5B**

100' 0 100' 200'
SCALE: 1" = 100'



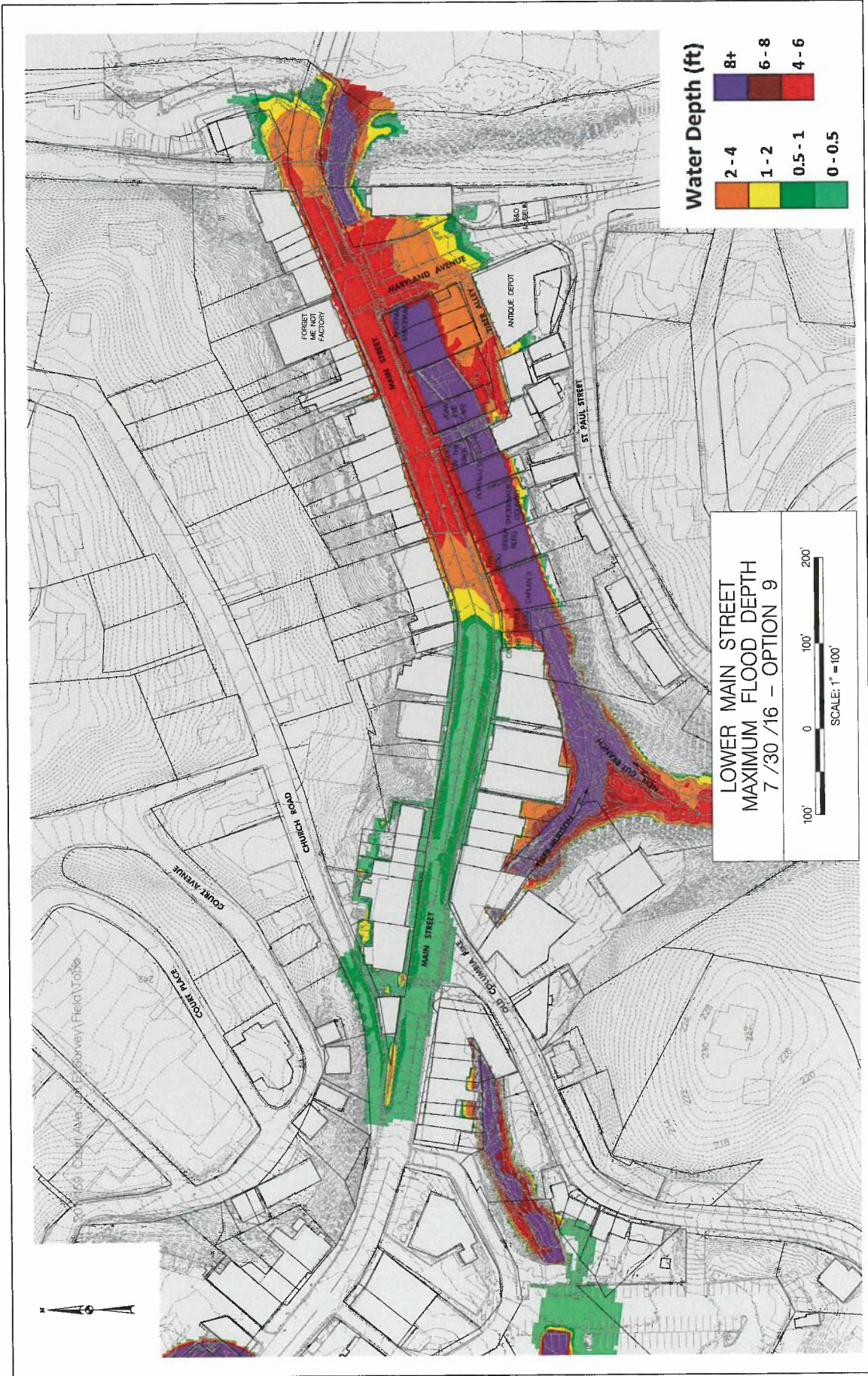
**LOWER MAIN STREET
MAXIMUM FLOOD DEPTH
7 /30 /16 - OPTION 6**

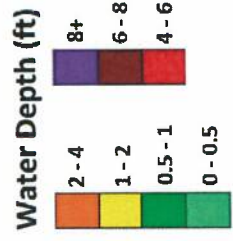




**LOWER MAIN STREET
MAXIMUM FLOOD DEPTH
7 / 30 / 16 - OPTION 8**

100' 0 100' 200'
SCALE: 1" = 100'

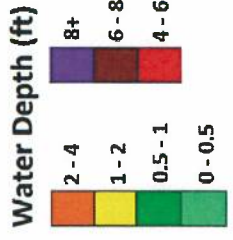
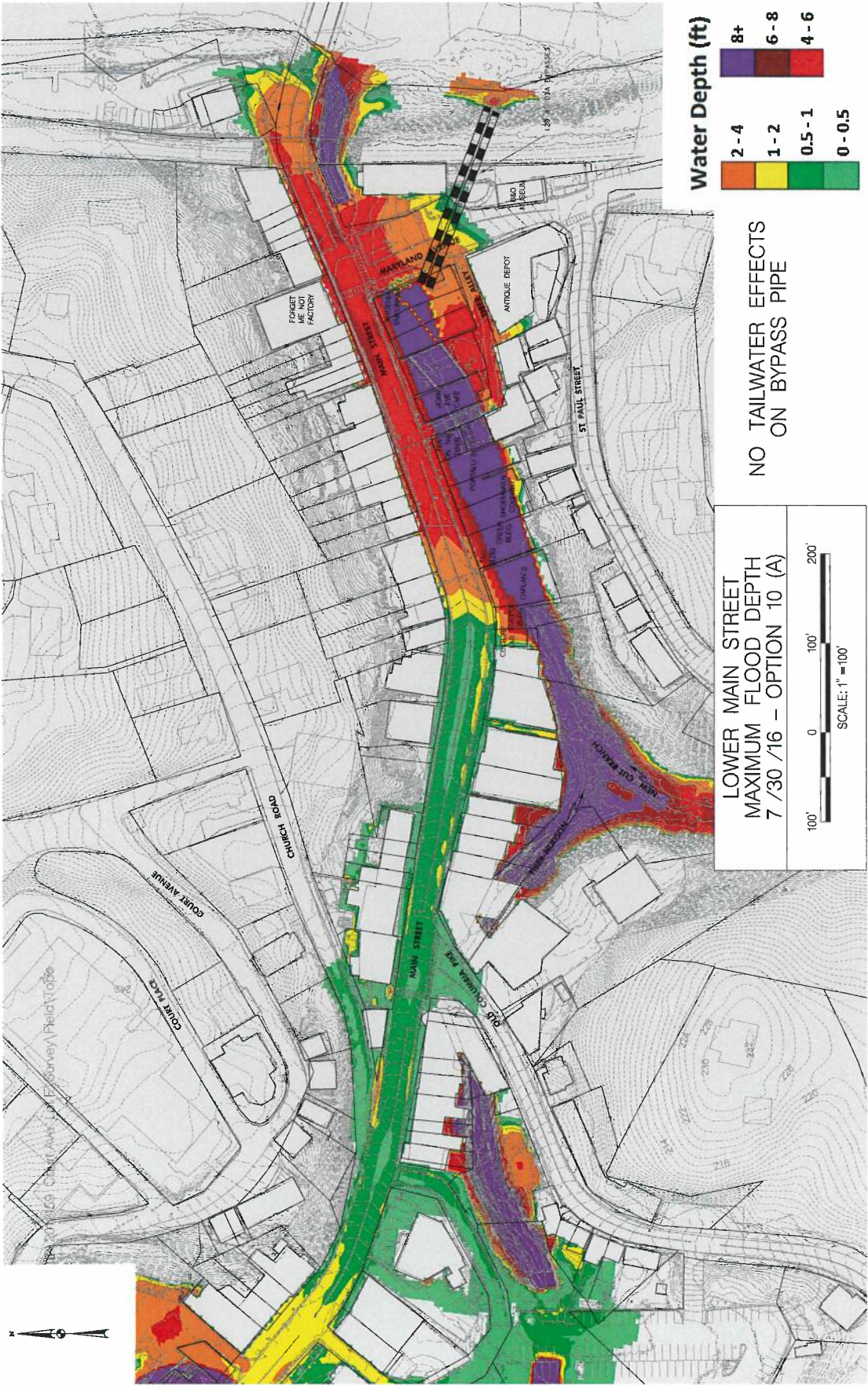




NO TAILWATER EFFECTS
ON BYPASS PIPE

LOWER MAIN STREET
MAXIMUM FLOOD DEPTH
7 / 30 / 16 - OPTION 10

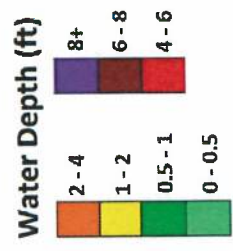
100' 0 100' 200'
SCALE: 1" = 100'



NO TAILWATER EFFECTS
ON BYPASS PIPE

LOWER MAIN STREET
MAXIMUM FLOOD DEPTH
7 / 30 / 16 - OPTION 10 (A)

100' 0 100' 200'
SCALE: 1" = 100'



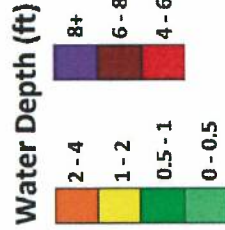
INCLUDES TAILWATER
EFFECTS FROM PATAPSCO
ON BYPASS PIPE
AND OUTLET

LOWER MAIN STREET
MAXIMUM FLOOD DEPTH
7 / 30 / 16 - OPTION 10 (TW)

100' 0 100' 200'

SCALE: 1" = 100'

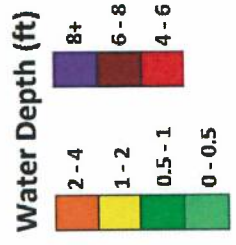
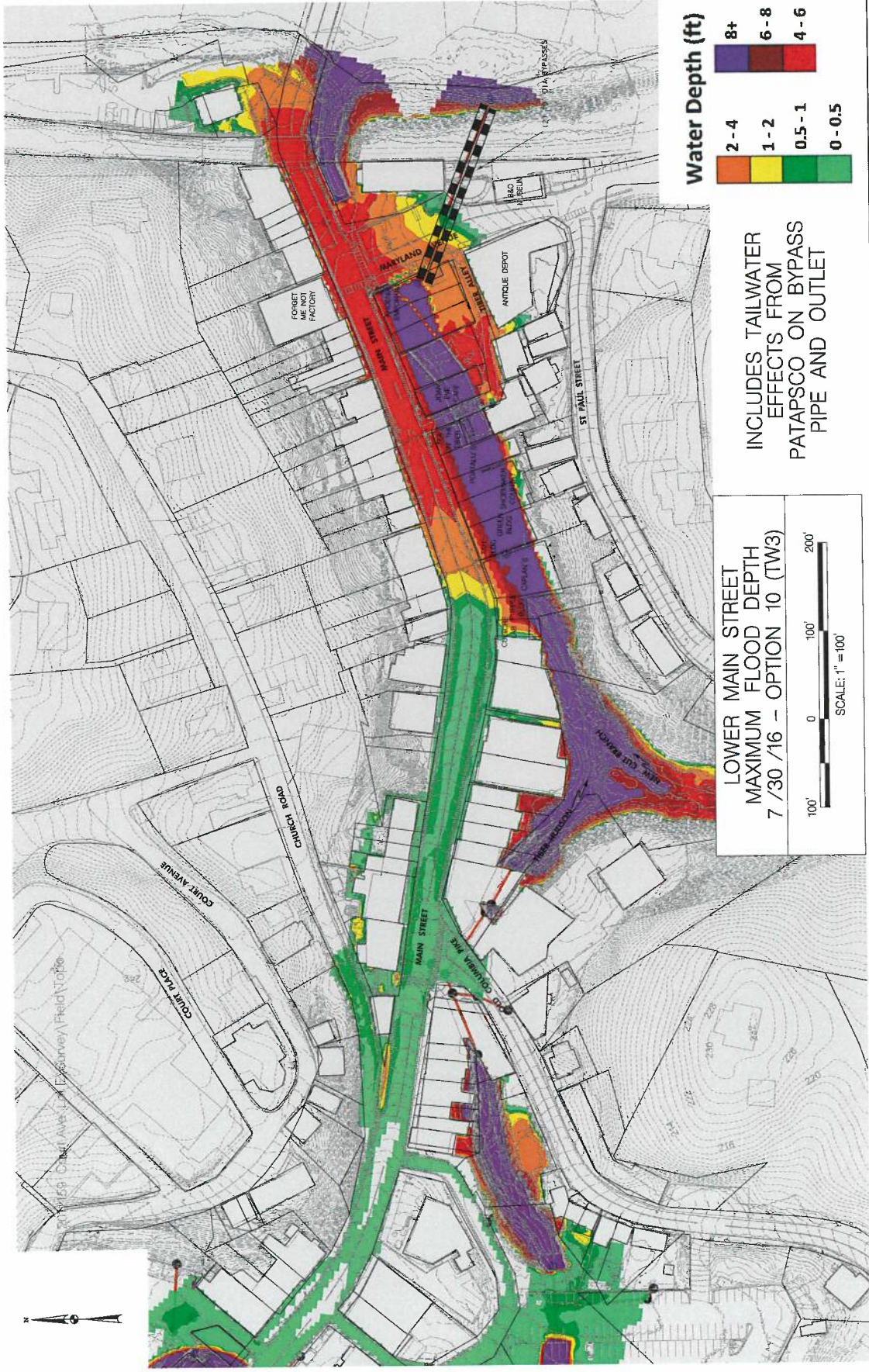




INCLUDES TAILWATER
EFFECTS FROM
PATAPSCO ON BYPASS
PIPE AND OUTLET

LOWER MAIN STREET
MAXIMUM FLOOD DEPTH
7 /30 /16 - OPTION 10 (TW2)

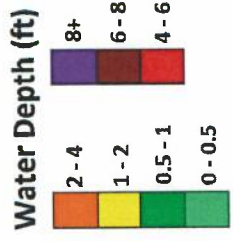
100' 0 100' 200'
SCALE: 1" = 100'



INCLUDES TAILWATER
EFFECTS FROM
PATAPSCO ON BYPASS
PIPE AND OUTLET

**LOWER MAIN STREET
MAXIMUM FLOOD DEPTH
7 / 30 / 16 - OPTION 10 (TW3)**

100' 0 100' 200'
SCALE: 1" = 100'

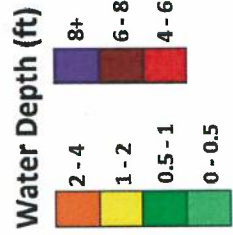
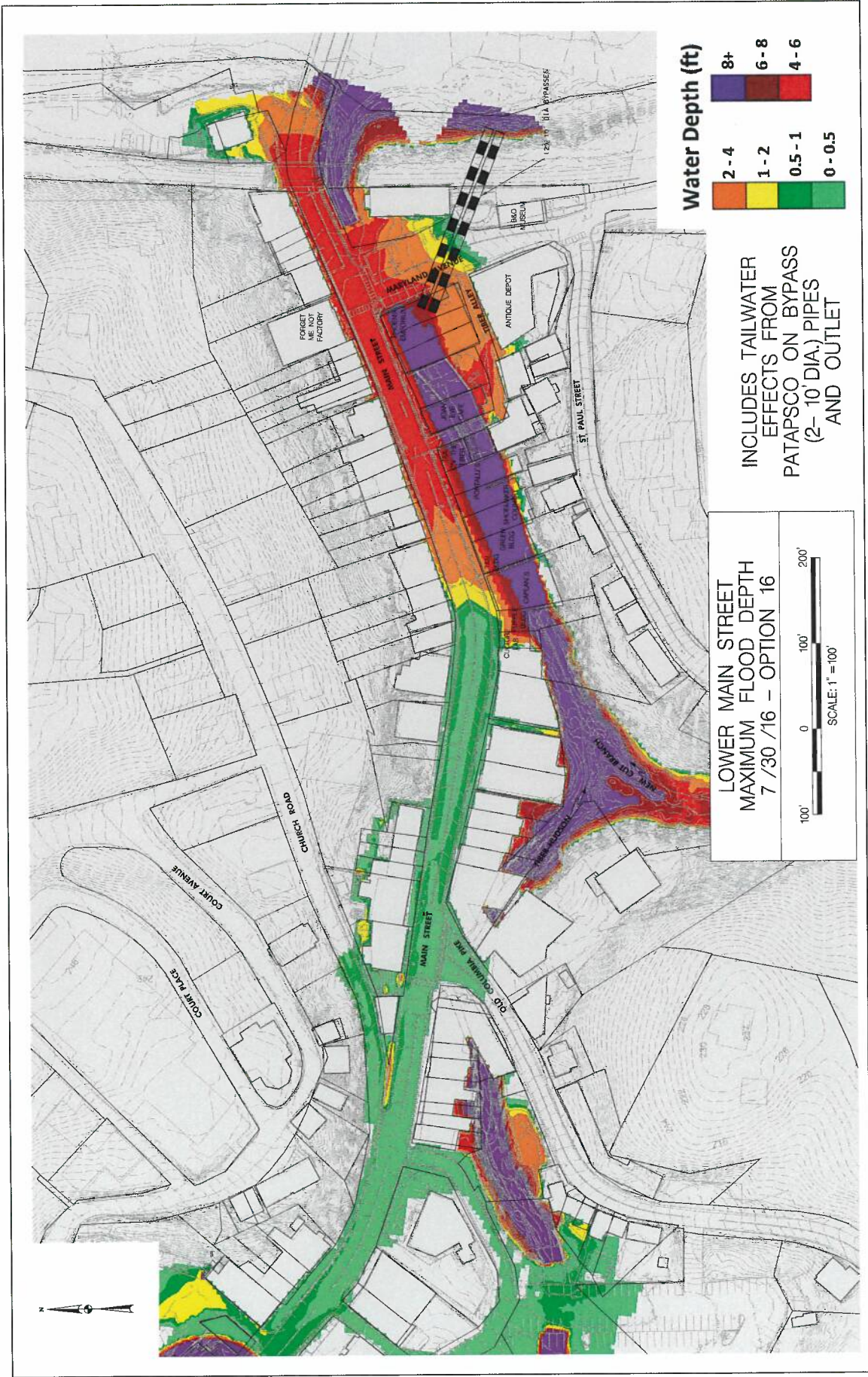


16'x10'
Bypass Pipe down Main
Street

**LOWER MAIN STREET
MAXIMUM FLOOD DEPTH
7/30/16 - OPTION MP 08A**

100' 0 100' 200'
SCALE: 1" = 100'

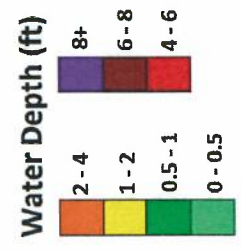




INCLUDES TAILWATER
EFFECTS FROM
PATAPSCO ON BYPASS
(2- 10' DIA.) PIPES
AND OUTLET

**LOWER MAIN STREET
MAXIMUM FLOOD DEPTH
7 / 30 / 16 - OPTION 16**

100' 0 100' 200'
SCALE: 1" = 100'



INCLUDES TAILWATER
EFFECTS FROM
PATAPSCO ON BYPASS
(2-10' DIA.) PIPES
AND OUTLET

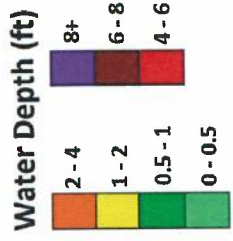
LOWER MAIN STREET
MAXIMUM FLOOD DEPTH
7 /30 /16 - OPTION 16B

100' 0 100' 200'
SCALE: 1" = 100'

MATCHLINE SEE SHEET 2 OF 4



MATCHLINE SEE SHEET 2 OF 4

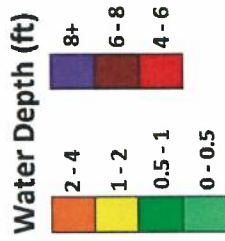


INCLUDES TAILWATER EFFECTS FROM PATAPSCO ON BYPASS (2-10' DIA.) PIPES AND OUTLET; CULTURE LAB AND PURPLE BUILDING REMAIN

LOWER MAIN STREET
MAXIMUM FLOOD DEPTH
7/30/16 - OPTION 16C

100' 0 100' 200'

SCALE: 1" = 100'



INCLUDES TAILWATER EFFECTS FROM PATAPSCO BYPASS (2-10 DIA.) PIPES; TIBER ONE SWM; CULTURE LAB AND PURPLE BUILDING REMAIN

LOWER MAIN STREET MAXIMUM FLOOD DEPTH 7 / 30 / 16 - OPTION 16D

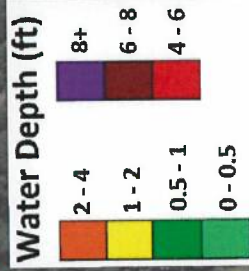
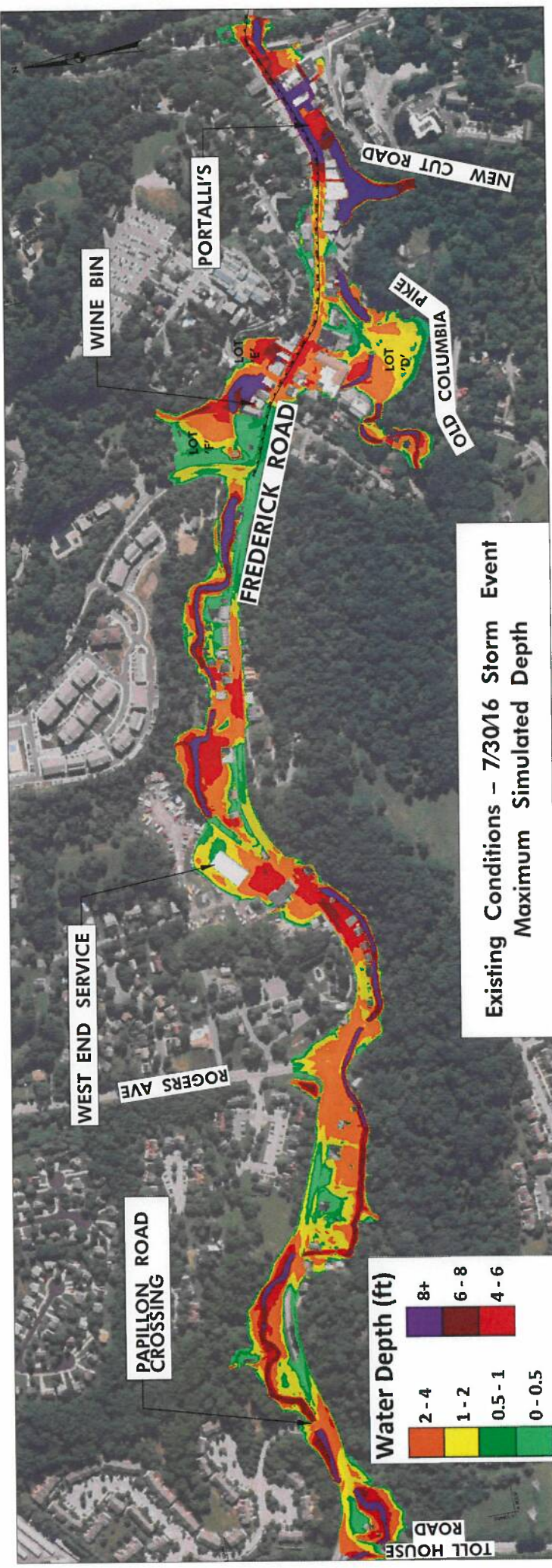


MATCHLINE SEE SHEET 2 OF 4

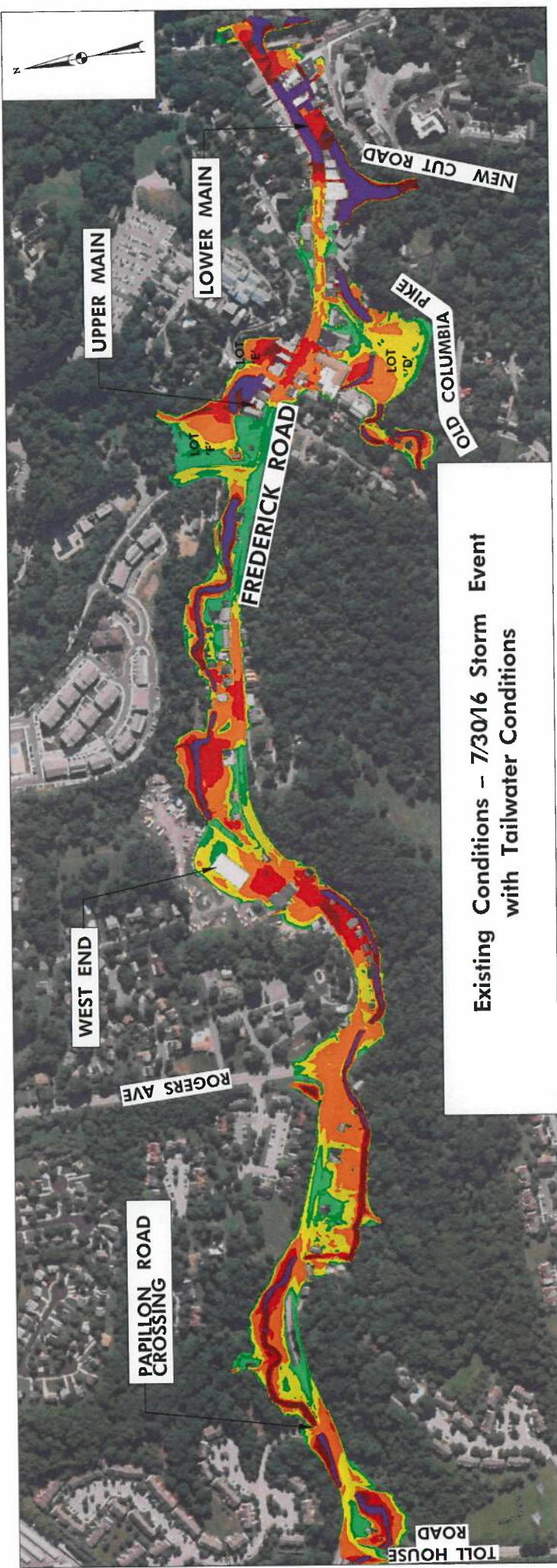
Full Extent Graphics

and

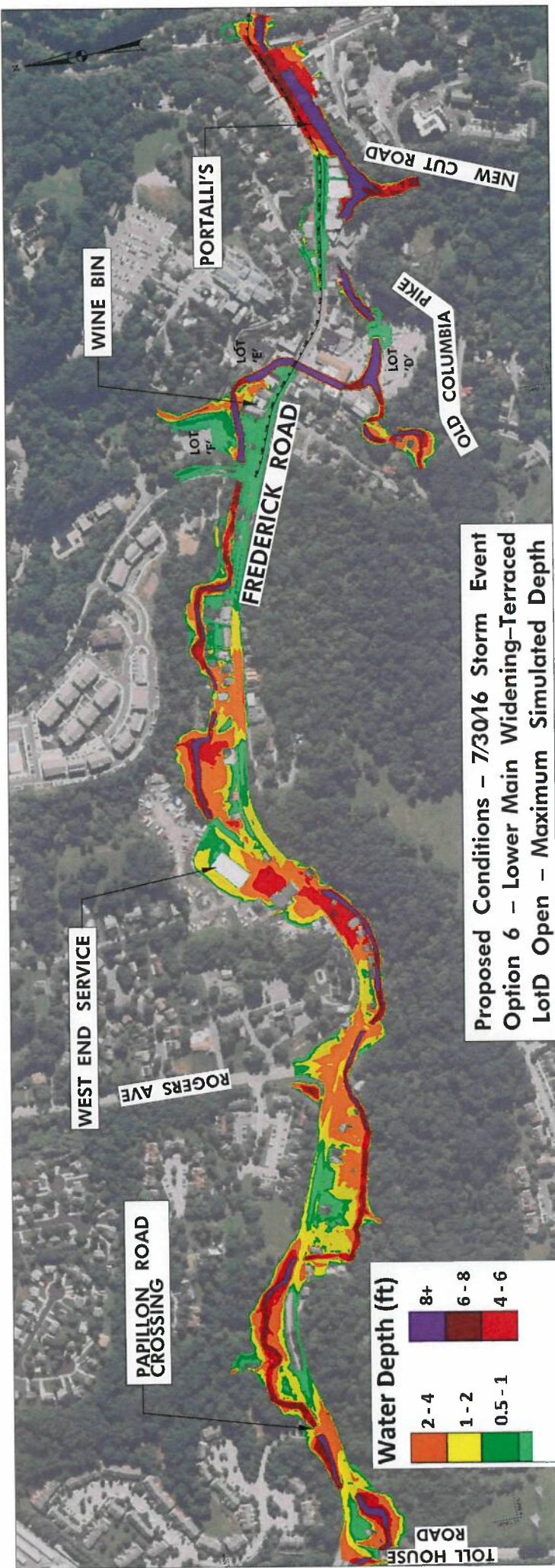
WSEL Difference
Mapping



**Existing Conditions - 7/30/16 Storm Event
Maximum Simulated Depth**

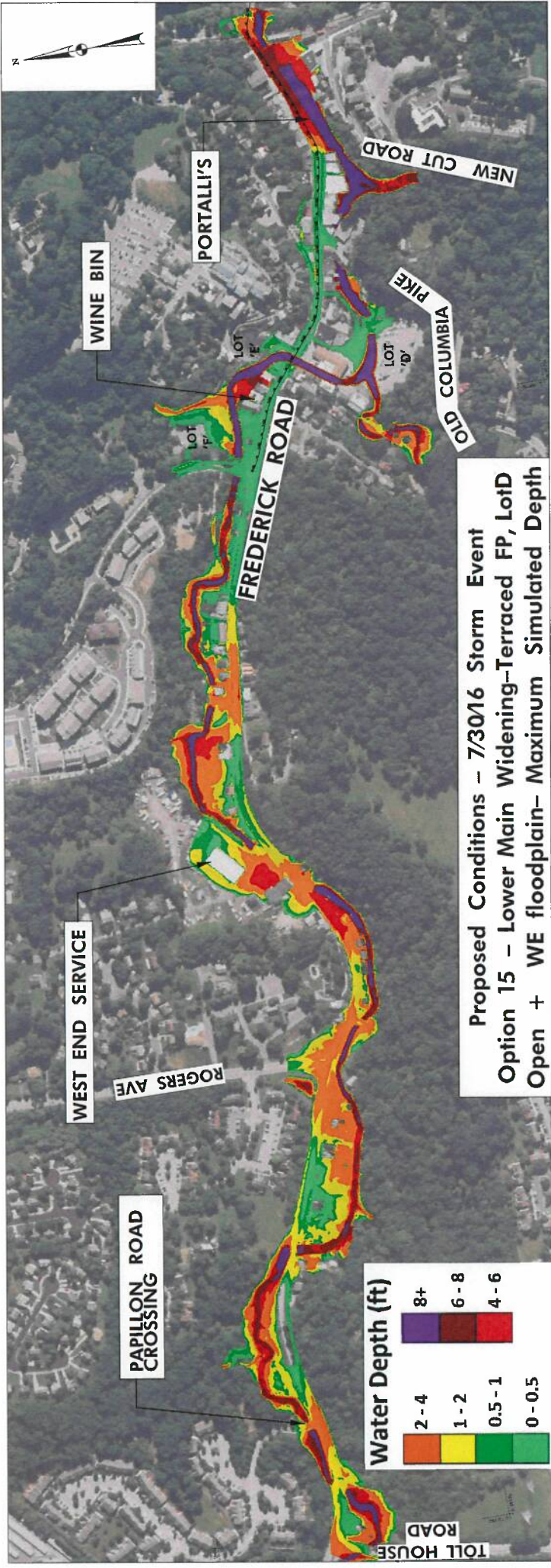


Existing Conditions - 7/30/16 Storm Event
with Tailwater Conditions



Proposed Conditions - 7/30/16 Storm Event
 Option 6 - Lower Main Widening-Terraced
 LotD Open - Maximum Simulated Depth

Water Depth (ft)	
2 - 4	8+
1 - 2	6 - 8
0.5 - 1	4 - 6



WINE BIN

PORTALLI'S

NEW CUT ROAD

OLD COLUMBIA PIKE

FREDERICK ROAD

WEST END SERVICE

ROGERS AVE

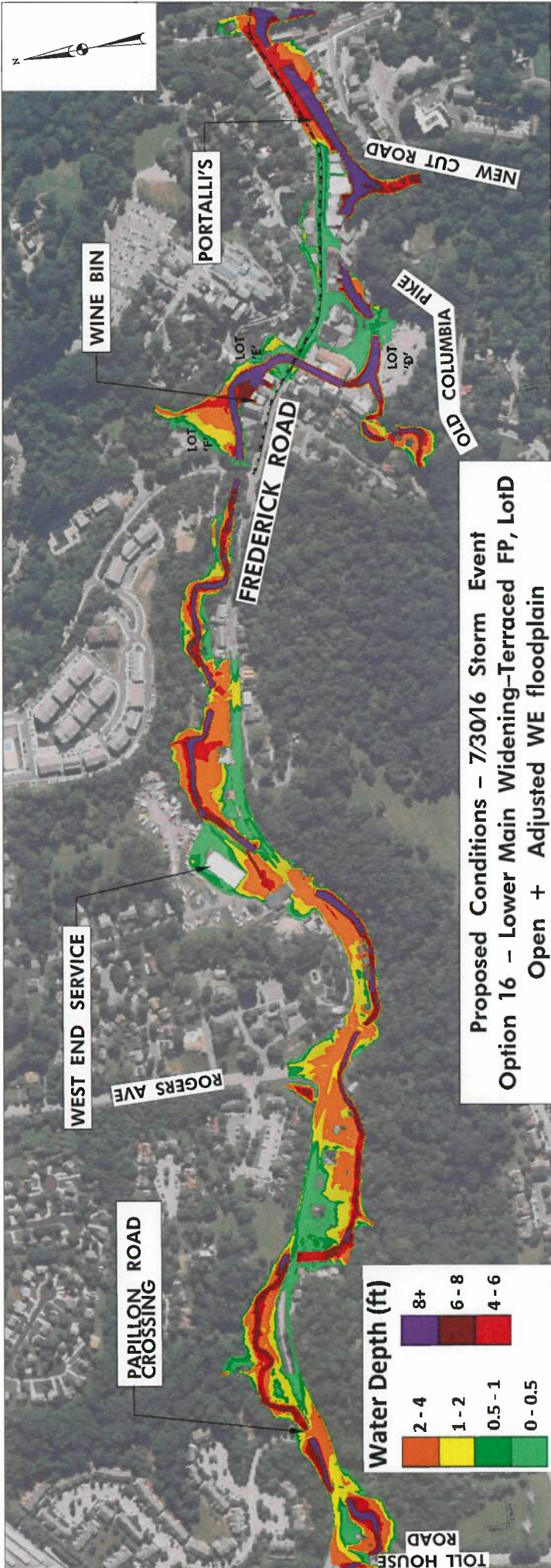
PAPILLON ROAD CROSSING

TOLL HOUSE ROAD

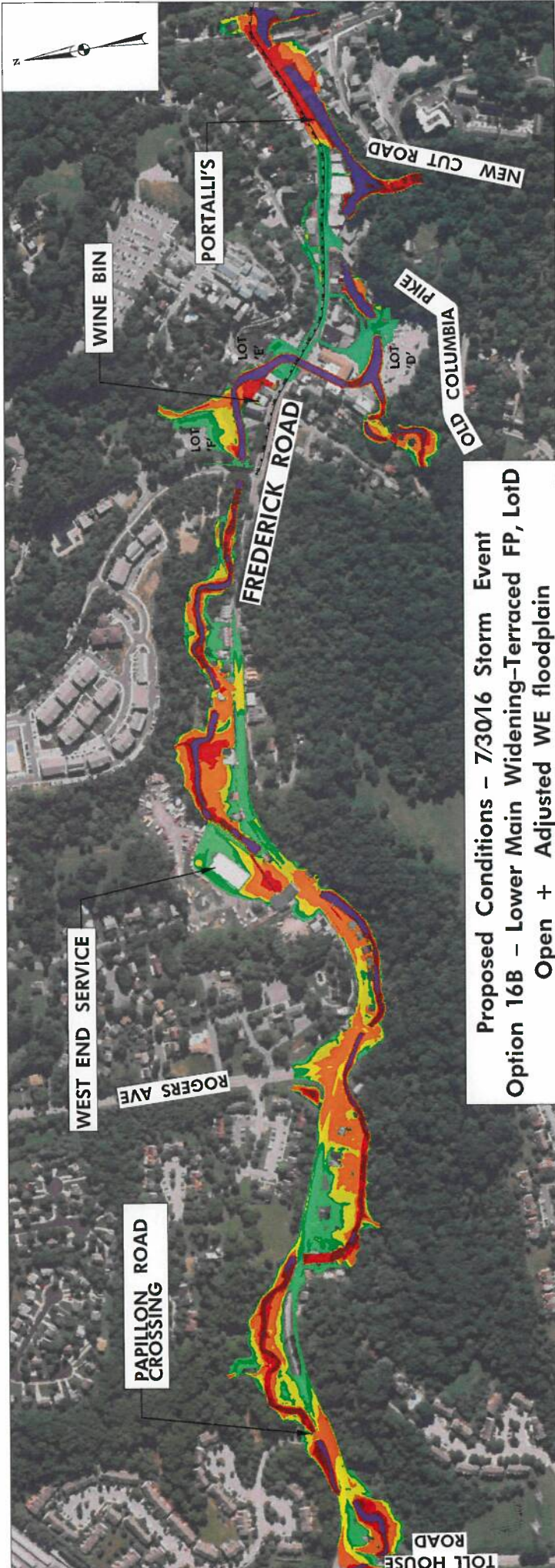
LOT 'E'

LOT 'F'

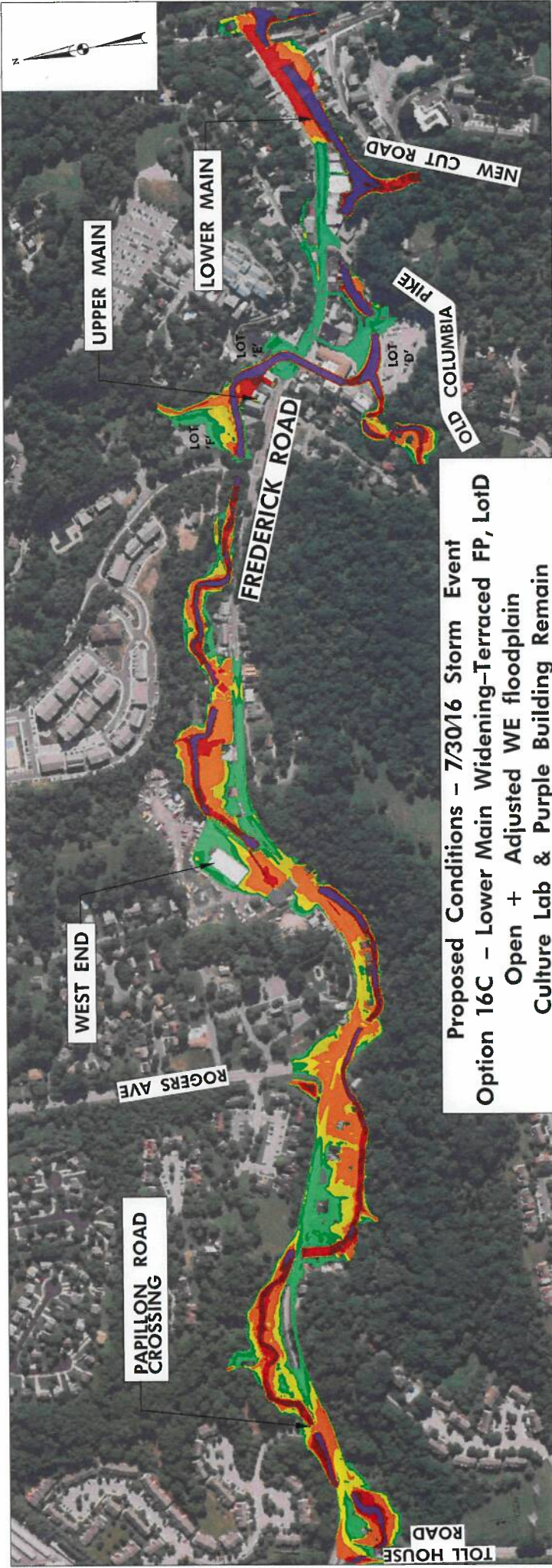
LOT 'D'



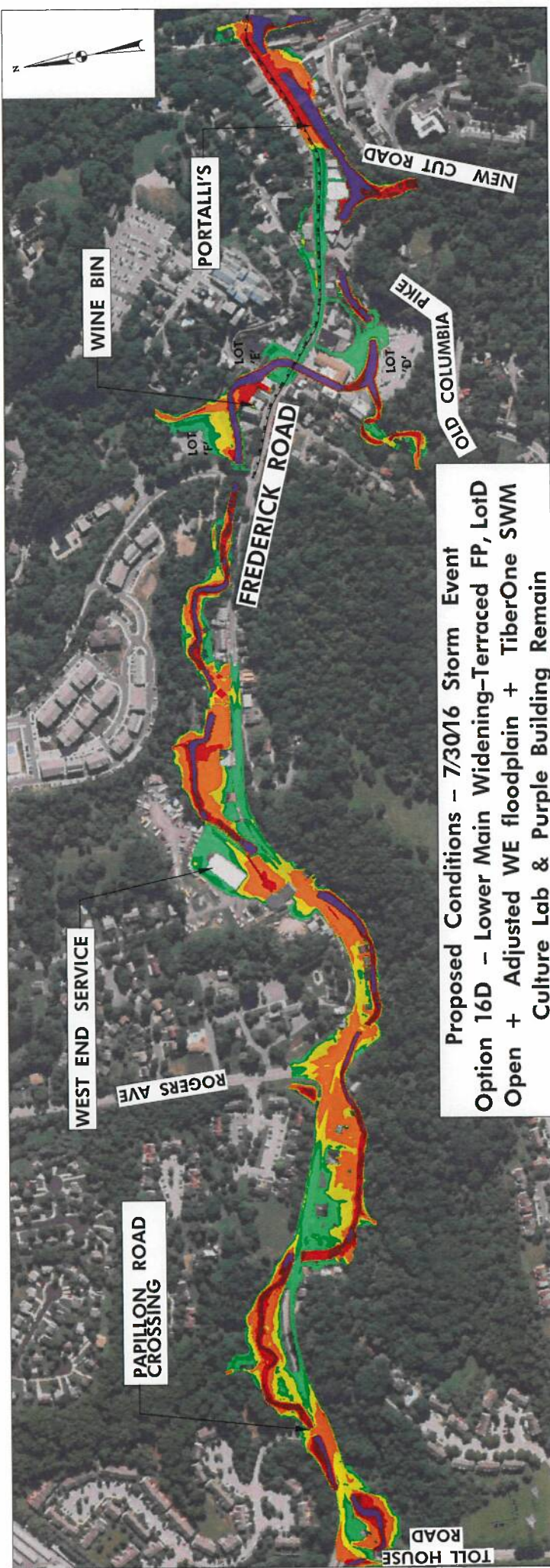
Proposed Conditions - 7/30/16 Storm Event
 Option 16 - Lower Main Widening-Terraced FP, LotD
 Open + Adjusted WE floodplain



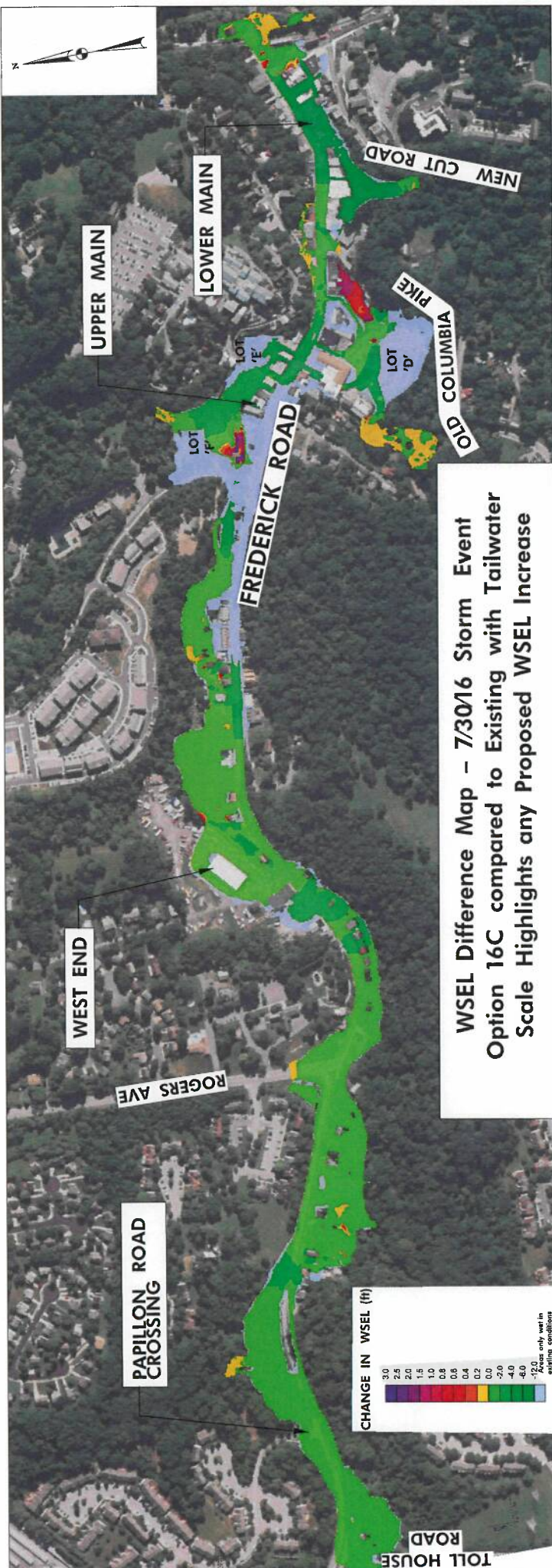
Proposed Conditions - 7/30/16 Storm Event
 Option 16B - Lower Main Widening-Terraced FP, LotD
 Open + Adjusted WE floodplain



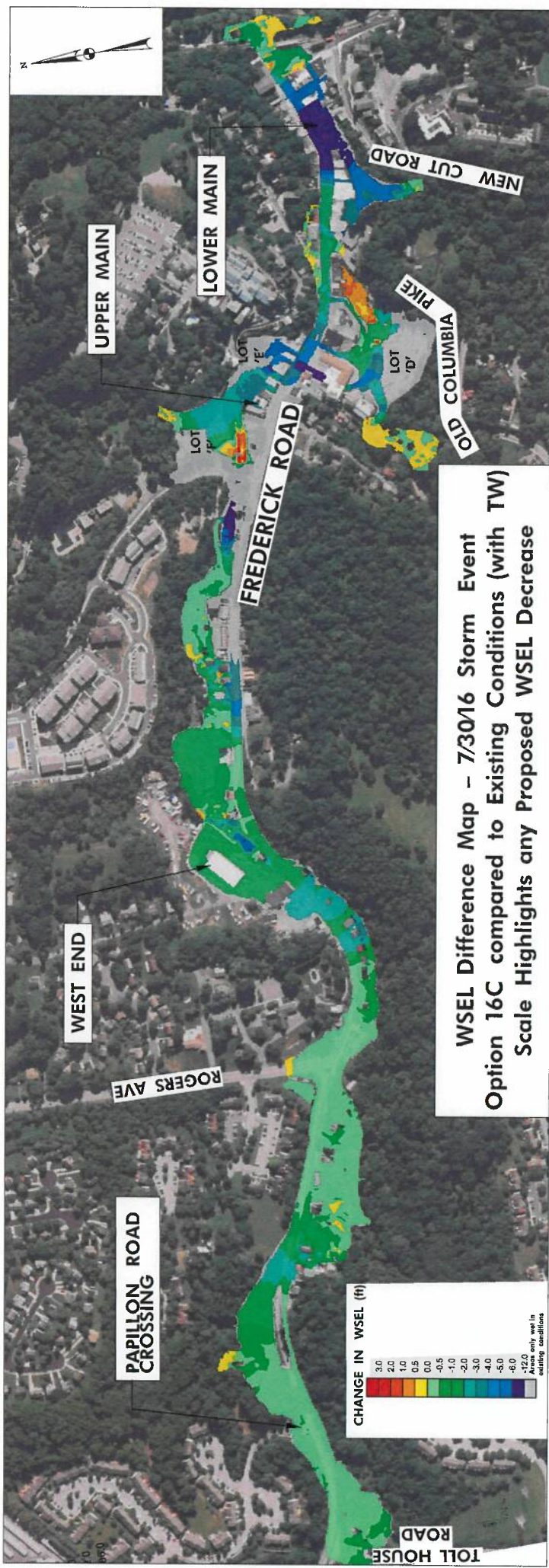
Proposed Conditions – 7/30/16 Storm Event
 Option 16C – Lower Main Widening–Terraced FP, LotD
 Open + Adjusted WE floodplain
 Culture Lab & Purple Building Remain



Proposed Conditions - 7/30/16 Storm Event
 Option 16D - Lower Main Widening-Terraced FP, LotD
 Open + Adjusted WE floodplain + TiberOne SWM
 Culture Lab & Purple Building Remain



**WSEL Difference Map – 7/30/16 Storm Event
 Option 16C compared to Existing with Tailwater
 Scale Highlights any Proposed WSEL Increase**



WSEL Difference Map - 7/30/16 Storm Event
 Option 16C compared to Existing Conditions (with TW)
 Scale Highlights any Proposed WSEL Decrease

