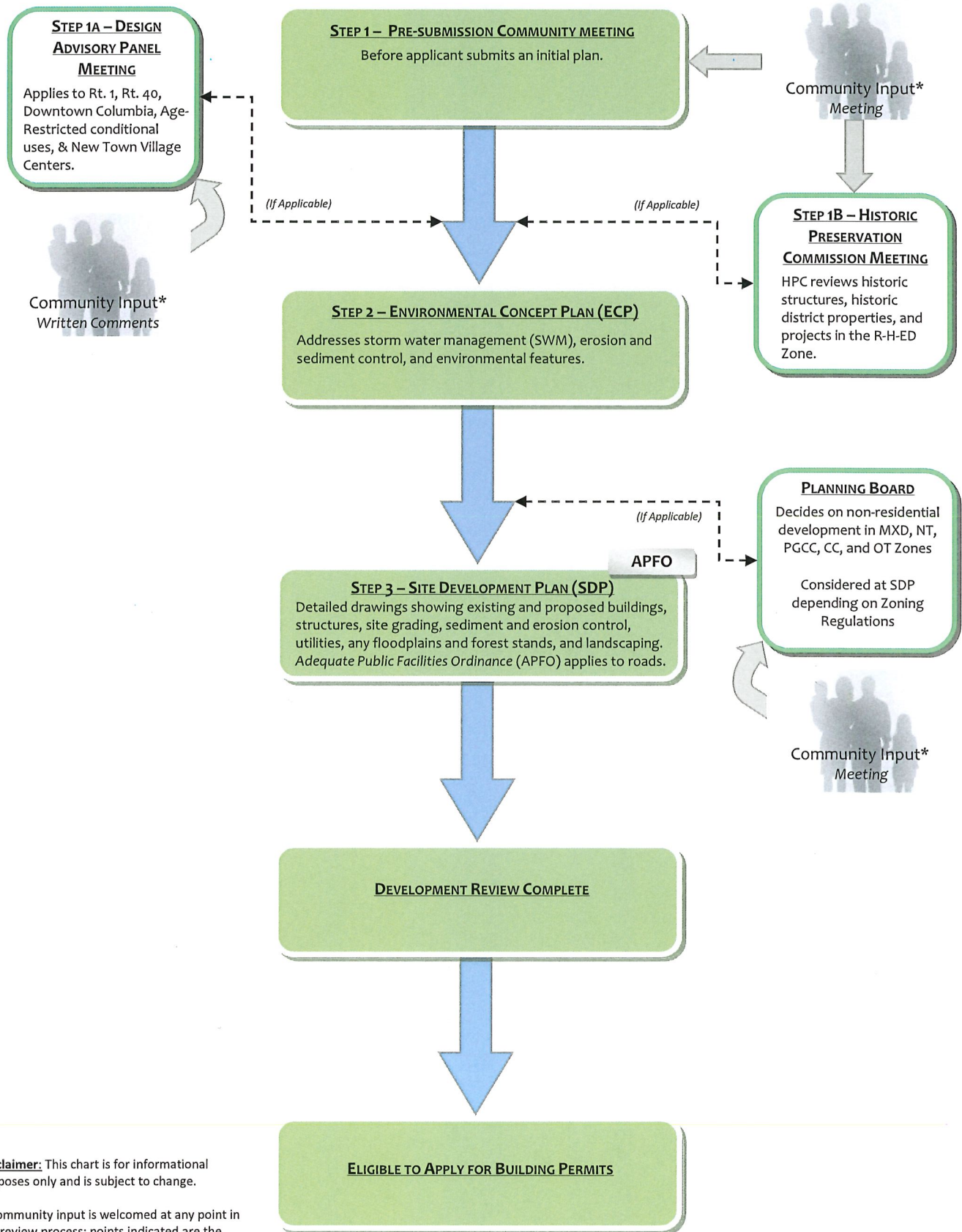


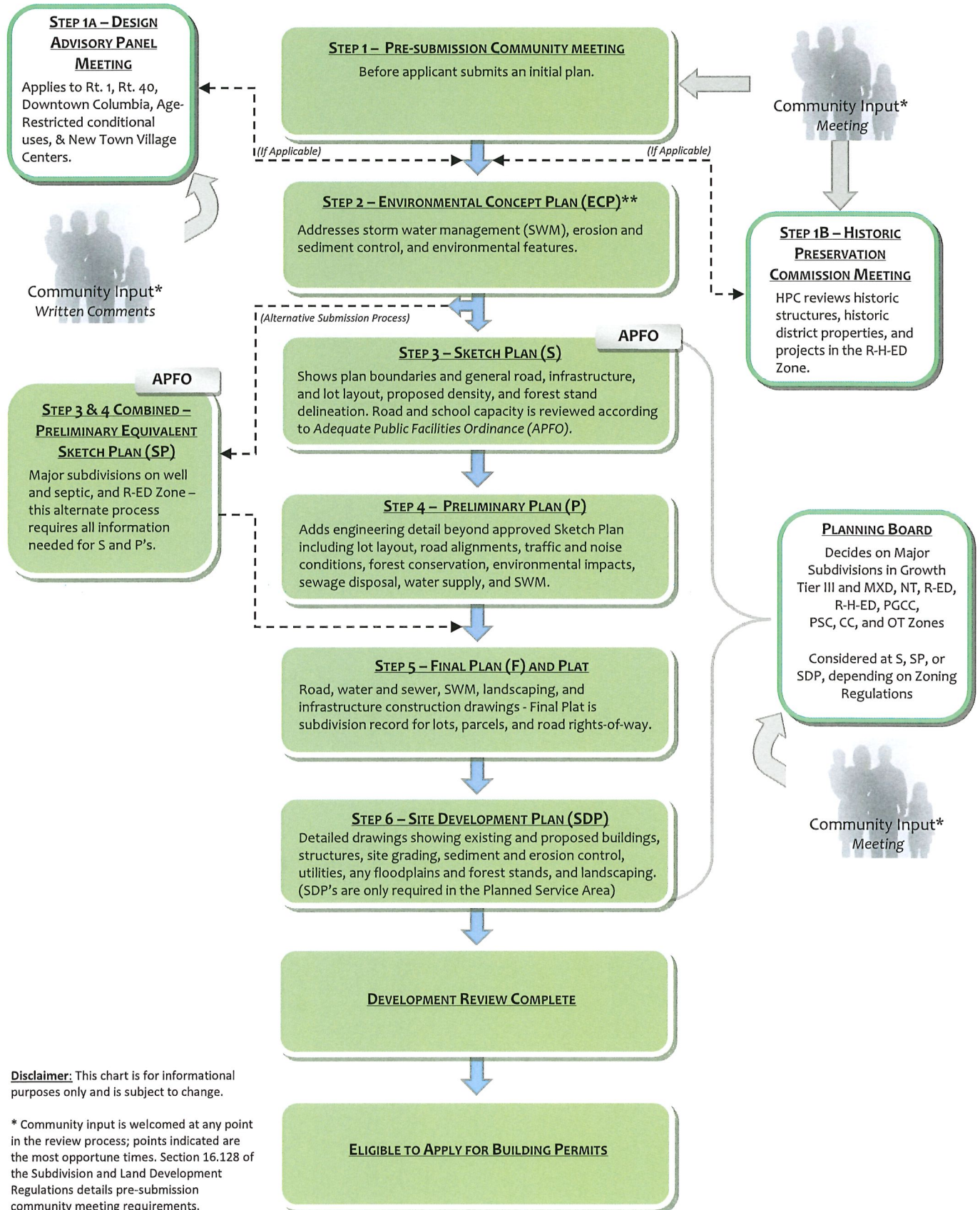
NON-RESIDENTIAL DEVELOPMENT PROCESS



Disclaimer: This chart is for informational purposes only and is subject to change.

* Community input is welcomed at any point in the review process; points indicated are the most opportune times. Sections 16.128 and 16.156 of the Subdivision and Land Development Regulations details pre-submission community meeting requirements.

MAJOR SUBDIVISION PROCESS (5 LOTS OR MORE)

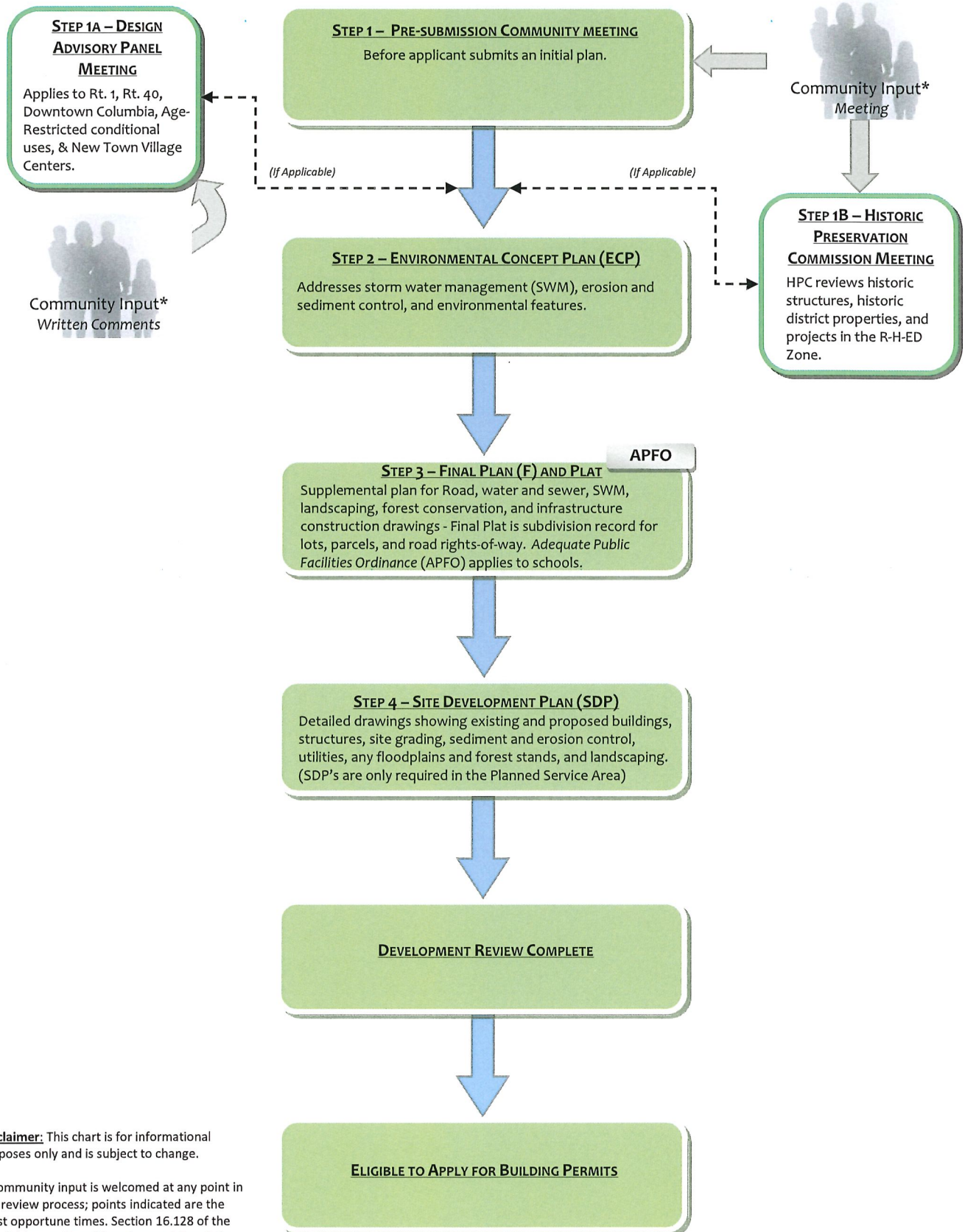


Disclaimer: This chart is for informational purposes only and is subject to change.

* Community input is welcomed at any point in the review process; points indicated are the most opportune times. Section 16.128 of the Subdivision and Land Development Regulations details pre-submission community meeting requirements.

** Environmental Concept Plan (ECP) must be submitted with S or SP and prior to SDP and Resubdivision Final Plans.

MINOR SUBDIVISION PROCESS (4 LOTS OR LESS)



Disclaimer: This chart is for informational purposes only and is subject to change.

* Community input is welcomed at any point in the review process; points indicated are the most opportune times. Section 16.128 of the Subdivision and Land Development Regulations details pre-submission community meeting requirements.