

Amendment 2 to Council Resolution No. 40-2020

**BY: The Chairperson at the request
of the County Executive**

**Legislative Day 5
Date: April 6, 2020**

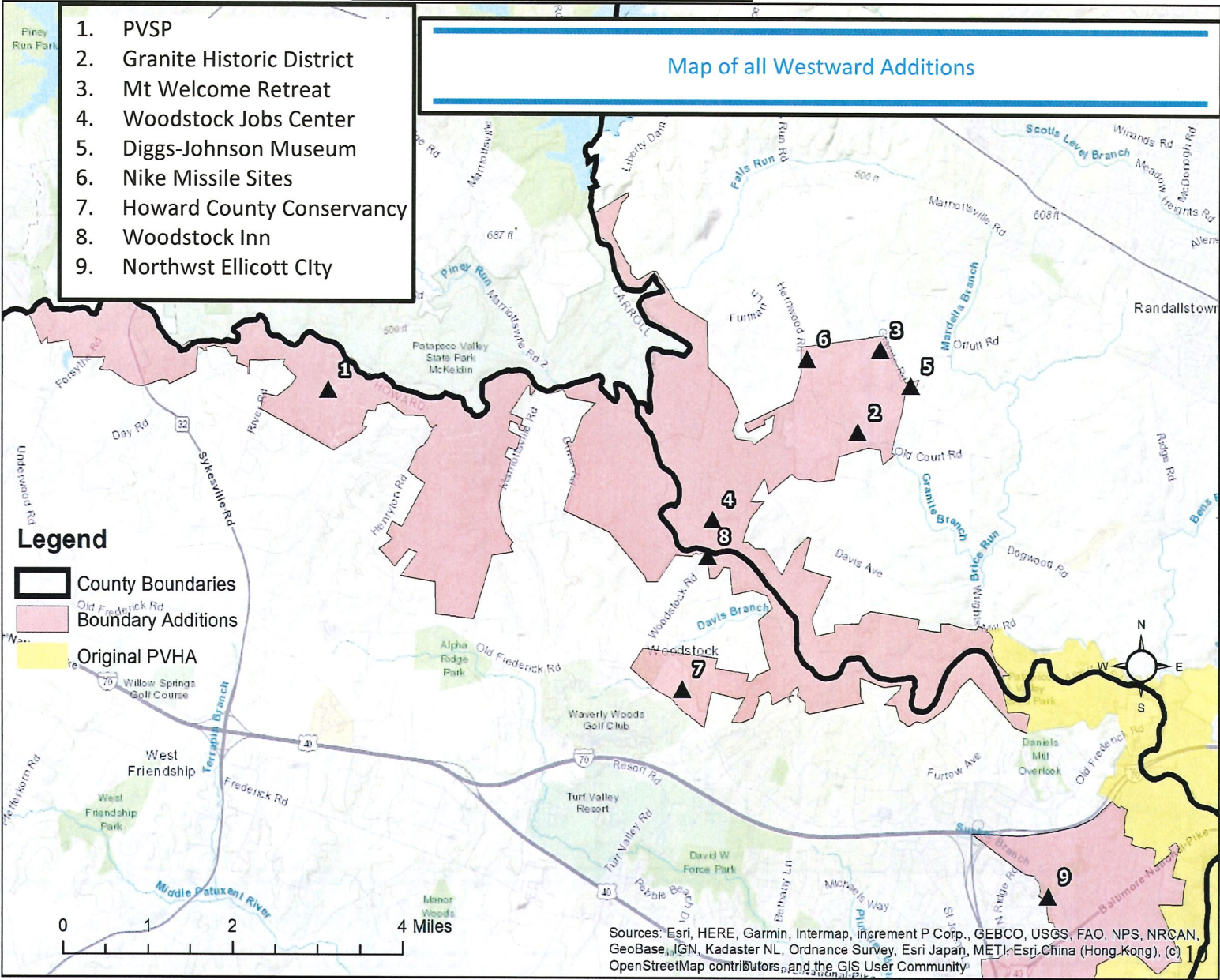
Amendment No. 2

(This amendment substitutes better maps that contain a legend and adds a map that should have been attached at prefile reflecting the portion of Northwest Ellicott City to be added to the Patapsco Valley Heritage Area.)

- 1 On page 1, in line 31, after “Exhibit A” insert “and areas of the Sucker Branch Watershed and
- 2 Korean Way (US Route 40), as shown in the attached Exhibit B”.
- 3
- 4 On page 2, in line 4, strike “Exhibit B and Exhibit C” and substitute “Exhibit C and Exhibit D”.
- 5
- 6 Remove Exhibits A, B and C, attached to the Resolution as prefiled, and attach Exhibits A, B, C
- 7 and D, as attached to this Amendment, to the Resolution.

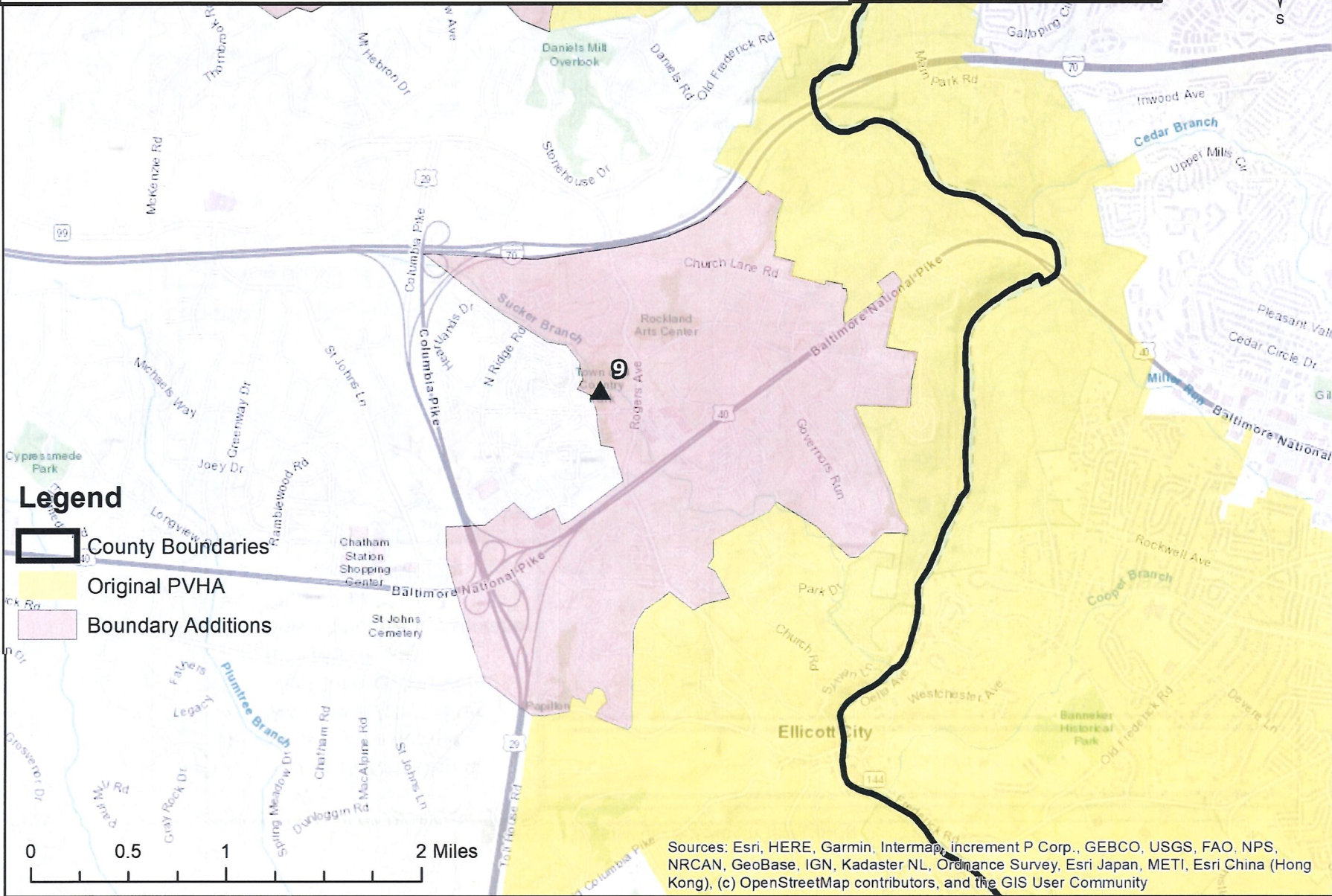
ADOPTED April 6, 2020
FAILED _____
SIGNATURE Deane A. Jones

PROPOSED WESTWARD BOUNDARY EXPANSION



Map of Northwestern Ellicott City



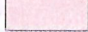
9. Northwest Ellicott City



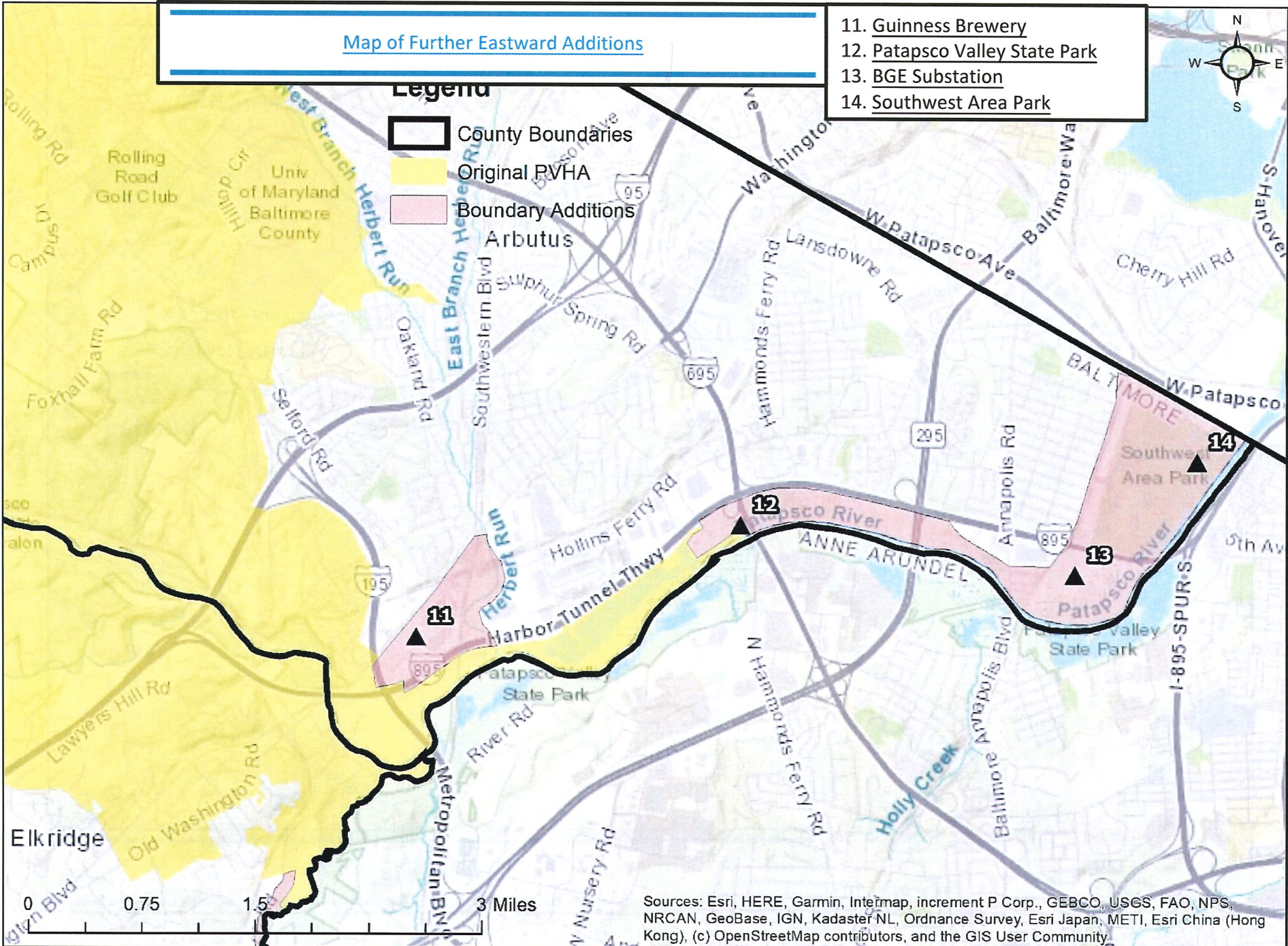
Sources: Esri, HERE, Garmin, Intermap, increment P Corp., GEBCO, USGS, FAO, NPS, NRCAN, GeoBase, IGN, Kadaster NL, Ordnance Survey, Esri Japan, METI, Esri China (Hong Kong), (c) OpenStreetMap contributors, and the GIS User Community

Map of Further Eastward Additions

Legend

-  County Boundaries
-  Original PVHA
-  Boundary Additions

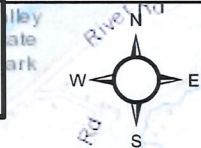
- 11. Guinness Brewery
- 12. Patapsco Valley State Park
- 13. BGE Substation
- 14. Southwest Area Park



Sources: Esri, HERE, Garmin, Intermap, increment P Corp., GEBCO, USGS, FAO, NPS, NRCAN, GeoBase, IGN, Kadaster NL, Ordnance Survey, Esri Japan, METI, Esri China (Hong Kong), (c) OpenStreetMap contributors, and the GIS User Community.

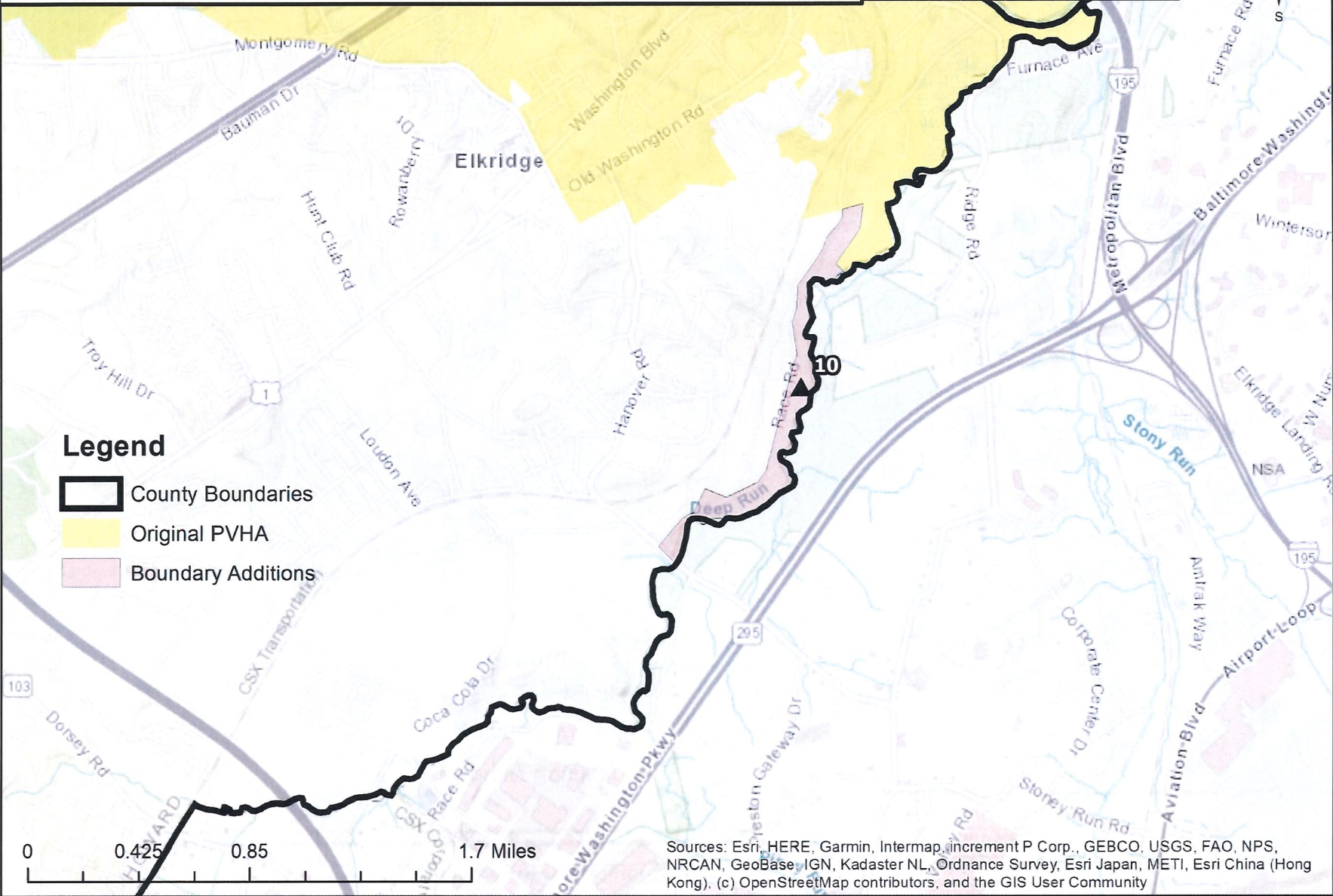
Map of Race Road Additions

10. Race Road



Legend

- County Boundaries
- Original PVHA
- Boundary Additions



Sources: Esri, HERE, Garmin, Intermap, increment P Corp., GEBCO, USGS, FAO, NPS, NRCAN, GeoBase, IGN, Kadaster NL, Ordnance Survey, Esri Japan, METI, Esri China (Hong Kong), (c) OpenStreetMap contributors, and the GIS User Community