

Also at Alpha Ridge...

Wood and Yard Trimmings

Brush, Christmas trees, stumps, grass, leaves, pallets, untreated lumber, etc. Plastic bags are prohibited.

Compost Demonstration Site

By observing a few simple steps, anyone can be a successful composter. Visit the ARL demo site to see hands-on composting techniques and pick-up a FREE compost bin. For a demo schedule, call 410-313-6444 or visit www.howardcountymd.gov/composting.htm.

Information Gazebo

Have questions? Visit the information gazebo for brochures and material.

Goodwill Collection

Goodwill will be located by the gazebo every 2nd and 4th Saturday from 8am to 3:30pm. Goodwill accepts gently used clothes, toys, books, furniture and household items.

Home Improvements?

Please donate reusable materials to The Loading Dock (see #9 inside). All non-reusable renovation, construction or demolition debris, including carpet, must go over the scales and tipping fee applies.

Save yourself a trip to ARL and visit www.howardcountymd.gov/CAndD.htm for pickup options.

Welcome to Alpha Ridge Landfill

When dropping off materials for recycling or disposal, please prepare items as stated in this brochure and place items in designated areas. Trash should be a last resort. Please follow posted directions and instructions from landfill staff. Collection containers are subject to change.

Scavenging is prohibited and very dangerous.

Proof of Residency

Proof of County residency (Driver's License) is required and must be shown to the gate attendant.

Holiday Closings

The landfill is closed on...

New Year's Day	Labor Day
Memorial Day	Thanksgiving Day
Independence Day	Christmas Day

Prohibited Materials

Ammunition	Friable Asbestos
Dead Animals	Medical Waste
Hot Ash	Radioactive Waste
Explosives	Septic Waste
Engine blocks (over 2')	

Questions?

Call 410-313-6444
FAX 410-313-6490
DD 410-313-2323
www.HowardCountyRecycles.org

Also Consider:

- Donating usable items to local charities.
- Exploring online classifieds.
- Recycling Batteries, CFLs and electronics through customer take back programs at Best Buy, Home Depot, Lowes, My Organic Market, Radio Shack, Staples, etc.

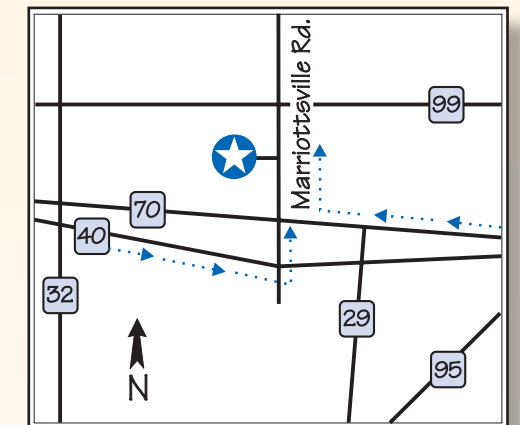
What happens to your recyclables? Visit our website and click on this picture.



Department of Public Works
Bureau of Environmental Services
6751 Columbia Gateway Drive
Suite 514
Columbia, MD 21046
410-313-6444
www.HowardCountyRecycles.org



A Guide to the Residents' Convenience Center at Howard County's Alpha Ridge Landfill



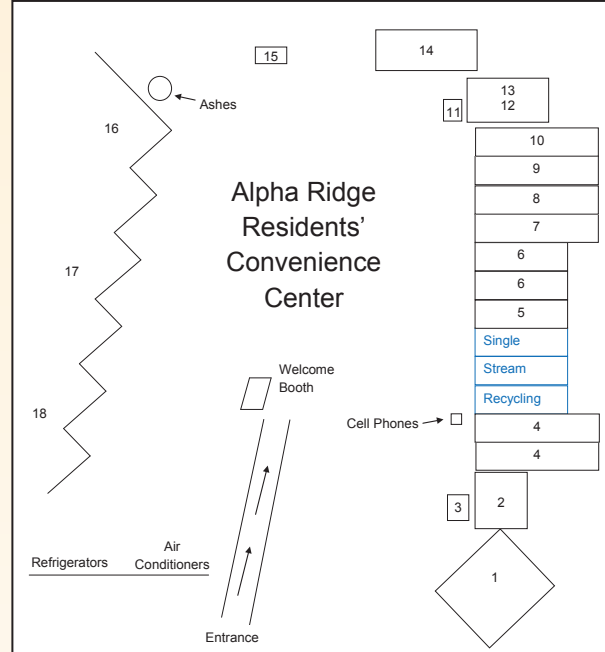
Location

2350 Marriottsville Road
Marriottsville, MD 21104
410-313-6444
www.HowardCountyRecycles.org

Hours

Monday - Saturday
8:00 am - 4:00 pm

The following materials are accepted from Howard County residents:



1. Household Hazardous Waste

Gasoline; rechargeable, lithium or button batteries; pesticides; insecticides; solvents; furniture strippers; degreasers; CFLs, etc.

Open April-November, Saturdays only.

2. Roofing Shingles

Paper and nails may be mixed with roofing shingles. Tipping fee will apply.

NO trash, wood or miscellaneous items.

3. Compressed Gas Tanks

Fire extinguishers, propane, helium & oxygen tanks.

4. Electronics

Anything with a plug that is not an appliance.

5. Rigid Plastic

Buckets, lawn furniture, laundry baskets, flower pots, garbage cans, etc.

NO PVC pipes, tubing, vinyl siding.

6. Cardboard

Please flatten.

7. Carpet & Padding

Wall to wall carpet and carpet padding only. No area rugs. Tipping fee applies.

8. Mattresses & Box Springs


Dry mattresses and box springs. 100% soft foam mattresses. Please load vertically.

9. Reusable Building Materials

Banisters, bathtubs, cabinets, countertops, doors, hardware, lighting fixtures, lumber, molding, plumbing fixtures, shelving, stairs, toilets, windows, etc.

Please donate reusable materials only. Tax receipts are available on the first Saturday of the month.

10. Styrofoam™ #6

White foam packaging, clean food trays, cups, containers and egg cartons (all colors). Items must be foam marked with 

NO foam peanuts, foam insulation, clamshells or other non-foam #6 containers.

NOTE: We may add or remove materials as vendors and markets change. If you have questions, please call 410-313-6444 or visit howardcountymd.gov/ar1.htm

11. Cooking Oil

Used cooking oil. NO bones.

12. Oil & Filters

Motor oil, transmission oil and oil filters.

13. Antifreeze

Clean antifreeze only.

Please leave container for attendant to empty. Do not empty container yourself.

14. Wet Cell Batteries

Auto, boat and motorcycle. (Rechargeable and other non-alkaline batteries are accepted as Household Hazardous Waste). Alkaline batteries can be disposed of in your regular trash.

15. Clothing & Textiles

Clothing, curtains, sheets, blankets, towels, hats, belts, handbags, paired shoes, socks, etc.

Must be clean and dry. Items are donated to a non-profit organization.

16. Tires

Automobile and truck tires. Limit: 4 tires annually. NO rims. (Rims should be recycled with scrap metal).

17. Trash

Last Resort! Non-donatable, unrepairable, non-recyclable items only.

18. Metal Items

Appliances, furnaces, air conditioners, auto parts, bicycles, furniture, mowers, copper and brass items, aluminum siding, tire chains, light fixtures, tire rims, fencing, cable, etc. Drain motors of oil and fuel.

Note: Place air conditioners and refrigerators in designated area. Fee applies to contractors.

Single Stream Recycling

Containers must be empty. Leave lids, labels and caps on.

Paper

Milk cartons, juice boxes, newspapers, magazines, junk mail, office paper, food boxes, books, etc.

NO plasticized or food-coated paper.

Plastic

Plastic bottles, tubs, jars and trays.

Please put large plastic items in the Rigid Plastic dumpster.

Metal Cans & Aluminum Foil

Food and drink cans, EMPTY aerosol cans, aluminum foil and foil bakeware.

Glass Bottles & Jars

Drink bottles, mayonnaise jars, ketchup bottles, baby food jars, etc.

HOWARD COUNTY

Home Composting Guide



PRODUCED BY
Howard County Bureau of Environmental Services

IN COOPERATION WITH
The University of Maryland Cooperative Extension
Master Gardener Program



Photographs taken at Lake Elkhorn Community Garden
courtesy of the Columbia Gardeners, Inc.

What is Compost?

Compost is a dark, soil-like material that results from the decomposition of plants and other natural materials. Decomposition is carried out with the assistance of microbes and small soil organisms, moisture, heat and air.



Composting is Easy:

You can take advantage of this natural process at home to easily produce compost at very little cost. All you need to get started is both green vegetative material and “brown” material such as sawdust, hay and leaves, etc., water, a place in your yard to make your pile or place your bin and a pitchfork or shovel to occasionally turn the material and/or dig up finished compost.

Did You Know That Compost Can...

1. Increase the moisture holding capacity of soil.
2. Suppress plant diseases and pests.
3. Balance the pH level of soils.
4. Stimulate root growth which can assist in reducing soil erosion.
5. Reduce or eliminate the need for chemical fertilizers.
6. Clean contaminated soil and water.

Why is composting important to Howard County?

Howard County government has a strong commitment to promoting recycling for the following reasons. Home Composting...

- Reduces the amount of yardwaste that is collected from homes.
- Saves money on collection and recycling costs.
- Reduces greenhouse gas emissions by decreasing the number of trucks that are needed to collect yardwaste.
- Reduces the amount of fertilizer or pesticide products that are needed which helps to protect the health of the Chesapeake Bay and its tributaries.

How is Compost Made?

Compost is created by layering green and brown wastes such as grass, wood chips, and leaves shown in the photograph into piles, rows, or in a bin. Green materials provide nitrogen and brown materials provide carbon, essential compost elements. The

layered pile is watered and turned as needed, allowing the material to fully decompose and mature into finished compost.



Let's Get Started

A bin is not needed to compost successfully at home. However, a bin presents a neater appearance than an open pile and is useful for controlling pests. Howard County residents can obtain a free bin similar to the black plastic bins that are depicted in this guide. For more details on how to obtain a bin, please call 410-313-6444.

Before you begin composting you will need to pick the proper spot for your composting bin.

Sun or Shade: Your Choice

Sun or Shade?	Pros and Cons	Special Considerations
PARTIAL SHADE	Best choice, keeps the compost from drying out too quick or overheating.	None needed.
FULL SHADE	Good choice, might need additional monitoring to make sure that the compost doesn't get too cold, killing soil organisms.	Add extra greens or manure when necessary to increase the heat of the pile. Bags of leaves, straw or shredded paper piled around the outside of the bin can also help to keep the pile warm.
FULL SUN	Good choice, might need additional monitoring to make sure that the compost doesn't dry out	May need to be watered frequently.



No matter which spot you use, remember to keep the bin within reach of a water hose.

Whether in sun or shade, pick a spot that drains well so that the pile doesn't develop odor problems due to too much standing moisture.

Build Your Pile

Once the spot has been identified and the bin has been set up, you can begin to build your layers. Ideally your layers of green and brown material should be around three inches thick. Once you have a few layers, add a small shovel full of garden soil. This will add organisms and microbes to your layers. (Organisms, such as worms and millipedes, digest both green and brown materials and then microbes, such as bacteria and fungi digest the excretions of the organisms; another important step in the decomposition process.)

Remember to always bury food wastes to prevent rodents and other wildlife from foraging in your bin. Burying food will also eliminate some potential odors. Exposed food waste and excess standing water are the two most common sources of odors in a home composting bin.

Sprinkle the layers with water and then continue adding more layers. When you have reached the proper height, sprinkle some more garden soil on top and then create a small depression in the top. This will aid in water retention.



What to Compost

YES

Cardboard egg cartons

Coffee grounds and filters

Dryer and vacuum cleaner lint

Eggshells and crabshells

Fireplace ashes

Fruits and vegetables

Grass clippings

Hair and fur

Hay and straw

Houseplants

Leaves

Livestock manure

Nut shells

Pine needles

Sawdust

Shredded newspaper

Tea bags

Weeds

Wood chips

Citrus peels, corn cobs and banana peels can also go into the compost bin. However, be prepared for these items to take a long time to decompose.

NO

Kitchen Waste

Dairy products (e.g., butter, milk, sour cream, yogurt), fats, grease, lard, or oils, meat or fish (including all bones) – might create odor problems and attract pests such as rodents or flies

Miscellaneous Waste

Charcoal ash – because charcoal is made from coal, it might contain substances harmful to plants

Pet waste (e.g., dog or cat feces, pet litter) – might contain parasites, bacteria and viruses harmful to humans

Plants that are infected by disease or insects – diseases might survive if the pile doesn't reach the correct temperature (approximately 140 degrees for 3 days) and could be transferred to other plants by the finished compost

Grass clippings or plants that have been treated with chemical pesticides – might kill beneficial soil organisms, slowing the rate of decomposition

Poison Ivy, Oak and Sumac – Even though these plants will decompose as easily as other types of vegetation, the oil that causes rashes in many people can take up to five years to completely degrade.

Active vs. Passive Composting



Now that you have created your pile, composting at this point can be either “*passive*” or “*active*.” Active piles are turned, passive piles are turned occasionally or sometimes not at all. This is a personal choice. Compost will happen eventually regardless of which method is chosen.

Passive Piles

Passive piles will compost, but will take longer than a turned pile. One of the main reasons that a passive pile takes longer than an active pile is that turning a pile exposes the

decaying material to air that is needed by the soil organisms that are breaking down the pile. To create an air pocket add a layer of branches in the middle of the pile.

Active Piles

Active piles should be turned at least once a week. An easy way to turn the pile is to pull the stakes or screws out of the ground and then remove the bin. Place the bin a few feet from the pile so that you have free access to the pile. Take a shovel or a pitchfork (a pitchfork works better than a shovel during the first few weeks) and turn over the layers. This will put air into the layers which is a vital part of the decomposition process. The pile can also be stirred instead of turned. However, to stir the pile you might need a special tool called a “compost aerator.” These can be bought through gardening catalogs or online stores. Active composting will produce finished material in two to three months.

Regardless of which method is chosen, the number one reason for slow decomposition in a compost bin is insufficient water. Materials that are being composted should feel moist to the touch, but never wringing wet. Closed top bins typically need more water added to them than open top bins. However, all piles, including non-containerized piles, need to be monitored for moisture content.

Managing Temperature and Moisture

Make sure that the pile stays moist to the touch and that it isn't too hot or too cold and you will eventually have a finished pile of compost to use. A pile that is too hot/cold or too wet/dry will drive off or kill the organisms needed to make compost. If a pile feels cool to the touch it should be turned to introduce air which will boost the population of organisms and microbes in your pile. Additional nitrogen can also be added at the same time to raise the temperature. If the pile feels much hotter than your hand or smells like ammonia then you should add some straw or leaves to balance out the ratio of green and brown material. It can also be turned and watered to cool it off. However, this effect might only be temporary if the carbon-nitrogen imbalance isn't corrected at the same time.

Managing Temperature and Moisture in the Compost Pile

Problem	Possible Cause	Solution
AMMONIA ODOR	Too much green material (grass or other vegetation)	Add brown material (leaves, straw, wood chips, etc)
ROTTEN ODOR	Pile too wet Exposed food scraps	Turn pile, add coarse, dry material such as sawdust, wood chips, etc. Bury food scraps
LOW PILE TEMPERATURE	Pile too small	Make pile larger
	Insufficient moisture	Add water while turning pile
	Poor aeration	Turn pile
	Insufficient green material	Add grass clippings, other vegetation or food waste
HIGH PILE TEMPERATURE	Cold air temperature	Increase pile size, or insulate pile with an extra layer of material (straw or leaves make good insulators)
	Pile too large	Reduce pile size
MATERIAL NOT BREAKING DOWN	Insufficient ventilation	Turn pile
	Pile too small	Make pile bigger or insulate sides
	Lack of green material	Add grass clippings, other vegetation or food waste
	Insufficient water	Turn pile and add water

When is the Compost Ready?

Finished compost should be dark brown in color and should resemble soil. However, the material on the outer edges of the pile takes longer to compost, so pull aside the top inch of material before attempting to make this determination. If you remove the top inch of material and can still identify the material underneath as leaves, pine needles, etc, then the compost needs more time to decompose. At that point the compost should be watered and/or turned if necessary and allowed more time to “cook.”



Using Finished Compost

Finished compost has many uses:



1. Use half an inch as a top dressing on your lawn or reseed a bare patch.
2. Add an inch to the soil around the base of established plants.
2. Add a two inch layer to potted plants.
3. Add a three inch layer at the base of new trees, bulbs or other plants.
4. Add a four inch layer when tilling the soil in a garden bed.
6. Remember to save some finished compost to add soil organisms into the new pile.

Further Adventures in Composting and Earth-friendly Yard Care.

Pallet Bins

In addition to composting with the bins that are available through Howard County and the Master Gardeners, compost can also be made using pallets that have been wired together. Pallet systems can be as simple as a single three-sided chamber, or more complex as shown in the accompanying photograph. With the system shown in the photograph, turning material is easy. After one bin has been filled, just take material from the full bin and toss it into the bin next door. The next week, just return the material back to the first bin. The third bin can be used to store excess green or brown material (i.e. stockpile extra leaves over the winter so that it is available to add to the green material in the spring).



Rake and Take Program

If your yard does not supply enough green or brown material, call the Howard County Master Gardeners and ask them about their ***Rake and Take Program***. This program coordinates Rakers (homeowners) who have excessive amounts of yard waste and are willing to rake it and bag it for Takers (you) to use for composting. For more information, call the Master Gardeners at 410-313-2707.



Grasscycling

Grasscycling is an environmentally responsible lawn care practice. To grasscycle, just remember to *“Mow it high and let it lie.”* Keep your mower blades sharp and stick to the one-third rule. Never remove more than one-third of the height of the grass in one mowing. Recommended mowing heights for home lawns are:

- Bluegrass 2-3 inches
- Perennial ryegrass 2-3 inches
- Bermudagrass 1-2 inches
- Tall fescue 2.5-3.5 inches
- Zoysiagrass 1-2 inches

Leave your grass clippings on the lawn, do not rake. The grass clippings will return nitrogen to your lawn and will make your lawn more drought resistant. Grass that is cut too short will develop shallow roots which are less able to withstand drought than plants with deeper roots, so by following the *one-third rule* you can also reduce the amount of water needed by your lawn. Grass clippings do not cause thatch, over-fertilizing causes thatch.

Howard County Master Gardeners

The University of Maryland, Cooperative Extension Service runs a program called the Master Gardener Program. The mission of the Master Gardeners is to educate Maryland residents about safe, effective and sustainable horticultural practices that build healthy gardens, landscapes and communities. Their services are free of charge to all Howard County residents and community groups. They are available to help you with:

- | | |
|-----------------------|-----------------------------|
| Composting | Plant diseases and insects |
| Rake and Take Program | Wildlife issues |
| Soil testing | Gardens and lawn management |

For additional information, please go to www.mastergardener.umd.edu or call: 410-313-2707.



References

- “The Rodale Book of Composting,”* Mary Gershuny, Rodale Press, (1992).
- “Let it Rot: The Gardeners Guide to Composting,”* Stu Campbell, (1998).
- “The Urban/Suburban Composter: The Complete Guide to Backyard, Balcony and Apartment Composting,”* Mark Cullen, Lorraine Johnson and Andrew Leverle, St Martins Press, (1994).



Howard County Bureau of Environmental Services

6751 Columbia Gateway Drive
Suite 514
Columbia, Maryland 21046

www.howardcountyrecycles.org

Electronics Recycling Options

Howard County does not endorse the following listings.

Alpha Ridge Landfill (2350 Marriottsville Road)

Visit www.howardcountymd.gov/electronics.htm for details.

A Better Way Computer Recycling

Elkridge based. Visit www.abetterwayrecycling.com or call 410-381-5588.

Apple

www.apple.com/recycling iPhone Reuse and Recycling Program and recycling for other electronics too.

AT&T

www.att.com/recycle - Drop-off program for recycling

Best Buy

www.bestbuy.com/recycling Free drop-off, including tube TVs up to 32 inches and flat TVs up to 60 inches.

Capitol Asset Recycling

Drop-off or pick-up. Visit www.caprecycling.com/electronics-recycling or call 877-247-2616 for details.

Costco Trade-in

www.costco.gazelle.com See what your electronics are worth: sell-back or recycle.

Dell

www.dell.com

Goodwill

Visit www.reconnectpartnership.com for participating locations and accepted items.

e-End

www.eendusa.com/ Certified Woman-Owned Small Business based in Frederick, MD.

Hewlett-Packard

- www.hp.com/recycle for hardware, ink cartridges, rechargeable batteries, fluorescent light bulbs and more.
- www.hp.com/united-states/tradein/home_flash.html - Money for your old computer

Howard County Sheriff's Department

Cell phones are provided to victims of domestic violence. Contact Corporal Bryan Waser at 410-313-4152.

Lazarus Foundation

Non-profit computer refurbishing and donation organization www.lazarus.org or call 410-531-8485

NT Recycling

Free drop-off and pick-ups available. <http://www.ntrecycling.com/> or 301-937-0393

Sam's Club Trade-in

www.econewonline.com/samsclub See what your electronics are worth: sell-back or recycle.

Samsung

Recycling Direct program. Visit www.samsung.com/recycling for a prepaid mailing label.

Securis

www.Securis.com or call 443-244-3661 for data destruction and recycling services.

Sony

www.sonystyle.com Trade-in or recycle

Sprint

The Sprint Buyback program offers customers an account credit Visit www.sprint.com.

Staples

www.staples.com - Staples Soul take-back and recycling program. Check link for restrictions

T-Mobile

Drop-off phones to any T-Mobile store.

Turtle Wings, Inc.

FREE drop-off of electronics (except CRT monitors). Pick-up is available. www.TURTLEWINGS.com

U.S. Postal Service

Get free envelopes from post offices to mail back inkjet cartridges, PDAs, Blackberries, digital cameras and MP3 players.

How Can I be a Responsible Consumer?

Proper care is essential when dealing with HHW

Buy Responsibly

- Compare and read labels. Not all brands contain hazardous materials.
- Only buy what you need. The large economy size ends up costing more when you don't use it all and must dispose of the leftovers.
- Purchase non-toxic household cleaning products, or safer alternatives, whenever possible.
- Use latex paint instead of oil-based paint.

Use Responsibly

- Always read and follow directions and precautions on labels.
- Never mix products unless directed. Some products are chemically incompatible and may react to cause fumes, fires or explosions.
- Avoid contact with skin and eyes. Wear protective eyes glasses, gloves and clothing when handling hazardous products.
- Use products for their intended purpose. If you have some left over, share it with friends, neighbors or community groups.

Store Properly

- Keep hazardous materials OUT OF CHILDREN'S REACH, in a dry, secure place.
- Separate flammable, corrosive and poisonous products.
- Keep hazardous materials away from food and sources of heat or sparks.
- Store materials in their original containers with their labels intact.

Dispose Properly

- DON'T place hazardous wastes in trash cans or refuse containers. These wastes may injure collection personnel, contribute to groundwater contamination from landfills and damage collection containers or vehicles.
- DON'T flush hazardous wastes down household or storm drains. These wastes can ruin septic fields, pollute groundwater or pass through municipal treatment systems to surface waters.
- DON'T dump, burn or bury hazardous wastes.

Accepted Mon-Sat

The following items are accepted for recycling at the Convenience Center Monday-Saturday, 8 a.m. to 4 p.m.

- Antifreeze
- Automobile batteries
- Motor oil & filters
- Propane tanks*
- Electronic equipment



*Also consider returning propane and other tanks to the seller.



Bureau of Environmental Services
6751 Columbia Gateway Drive
Suite 514
Columbia, MD 21046
410-313-6444
www.HowardCountyRecycles.org



Household Hazardous Waste

Your Guide to Howard County's Household Hazardous Waste Program



Alpha Ridge Landfill
Residents' Convenience Center

2350 Marriottsville Road
Marriottsville, MD 21104

April - November
SATURDAYS ONLY
8 a.m. - 4 p.m.

*Proof of County residency
(driver's license) is required.*

www.HowardCountyRecycles.org

What are Household Hazardous Wastes?

Many of the products we use in our home and routinely throw away with our trash are considered HOUSEHOLD HAZARDOUS WASTES. These products are similar to the regulated hazardous wastes produced by business and industry.

Products which are corrosive, flammable, reactive or toxic can be found in most homes, garages and workshops. These products pose risks if used, stored or disposed of improperly. Consider using less hazardous products instead.



Tip:

Use white vinegar, salt and water for surface cleaning and baking soda as a toilet cleaner. Search online for instructions to make additional green cleaners.



Tip:

Air dry or solidify paint by adding kitty litter, wood chips or sawdust. Once the paint is solid, place it out with your regular trash.

YES We Accept

- Automotive fluids (transmission fluids, brake fluid, etc)
- Batteries* (rechargeable, button, etc)
- Degreasers
- Fluorescent light bulbs/CFLs*
- Gasoline
- Household cleaners/powders
- Insecticides, pesticides, herbicides
- Mercury (thermostats)**
- Paint (Latex and oil-based)
- Photography chemicals
- Rust removers
- Solvents/strippers
- Swimming pool chemicals

For a full list call 410-313-6444 or visit www.howardcountymd.gov/HHW.htm

*Consider free customer take-back programs at Home Depot, IKEA, Lowes, My Organic Market and Radio Shack.

**Mercury thermostats and thermometers can be taken to the Howard County Health Department for recycling.

NO We Cannot Accept

- **Commercial, industrial or medical wastes.** This includes biologically active wastes. Contact a local waste service company for handling instructions.
- **Radioactive materials.** For further information, call the Maryland Department of the Environment, Office of Radiological Health, at 410-537-3300.
- **Asbestos.** This should only be removed by a trained contractor. For further information, contact the Bureau of Environmental Services at 410-313-6444.
- **Kepones (an insecticide)**
- **PCB's**
- **Dioxin**
- **Explosives or Ammunition.** Call the Office of the State Fire Marshal for disposal at 410-653-8980.

Did you know?

- Alkaline batteries manufactured after 1995 can be placed with your trash.
- The average family can accumulate as much as 100 pounds of HHW in the basement, garage, storage closets and under the kitchen sink. Consider non-toxic alternatives to save money and the environment.

What can I expect at the collection area?

You will be directed to the HHW drop-off area and asked to move your items to one of the analyzing tables.

On-site chemists will examine the materials. They may ask for your help in identifying any unknown or unlabeled materials that you have brought. Based on their analysis, they will determine the proper packaging for transport and disposal of the hazardous materials.

Helpful hints for transporting wastes safely

- Bring materials in their original container or in a secure, clearly labeled, leak-proof container.
- Make sure lids are tight.
- Group similar materials to make unloading easier.
- DON'T mix different or unknown materials together in the same container.

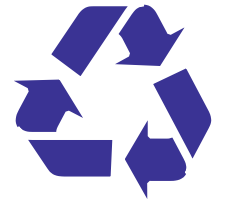
Tip:

Even green, natural cleaners can be hazardous. Please also dispose of these products responsibly.





Recyclables Only



- paper
- cardboard
- metal cans
- plastic containers
- glass bottles & jars



NO: Styrofoam, paper towels, napkins, food waste, snack wrappers, trash, etc.

www.HowardCountyRecycles.org 410-313-6444

Why Recycle?



Alpha Ridge Landfill

Recycling in Howard County



Howard County
MARYLAND
Recycles
410-313-7678
www.howardcountymd.gov/recycles.org

2/2014

It's Simple

Place your recyclable paper, plastic, cans, glass and cardboard together in the same container. No need to remove lids or labels, but please make sure containers are empty.

To Reduce Trash

Every item that is reused or recycled is one less item in the trash. Also consider:

- Donating to Goodwill or Salvation Army
- Exploring online classifieds
- Customer take-back programs for CFLs, electronics and batteries. Check out Best Buy, Home Depot, Lowes, My Organic Market, Staples, etc. for program details.

Your Contribution Matters

- American's generate 4.5 lbs of trash everyday!
- Recycling 1 aluminum can saves enough energy to power a TV for 3 hours.

Source: EPA

Holiday Slide Schedule

No collections will be made on the following holidays:

- | | |
|------------------|------------------|
| New Year's Day | Labor Day |
| Memorial Day | Thanksgiving Day |
| Independence Day | Christmas Day |

For a holiday listed above and the rest of that week, ALL trash, recycling and yard trim collections will slide to the next day. For a chart of your holiday collections, visit www.howardcountymd.gov/HolidaySchedule.htm.

2350 Marriottsville Road

Hours: 8am to 4pm, Monday - Saturday

The ARL Convenience Center is free for Howard County residents; just show your driver's license.

- Antifreeze
- Appliances
- Automobile batteries
- Carpet & padding*
- Clothing & textiles
- Compressed gas tanks
- Cooking oil
- Electronics (items with a plug or batteries)
- Household hazardous waste
(Saturdays only April-November)
- Mattresses & box springs
- Metal (scrap)
- Motor oil
- Reusable building materials
- Rigid plastics (lawn furniture, playhouses, coolers, etc.)
- Styrofoam™
- Tires
- Yard/Wood waste

*Fee applies

For a map of the Convenience Center and more details about Alpha Ridge Landfill, visit www.howardcountymd.gov/ARL.htm

Remember...No recyclable is too small to make a difference!

Questions?

410-313-6444

help@HowardCountyRecycles.org

www.HowardCountyRecycles.org

Twitter: @HoCoRecycles

Recycling Guide for County Collections

YES

NO



Paper

- drink boxes
- milk cartons
- newspaper and inserts
- white or colored paper
- food and snack boxes
- hard and soft cover books
- greeting cards
- non-foil gift wrap
- catalogs and magazines
- junk mail
- phone books
- bagged shredded paper
- three ring binders



Plastic

- bottles (milk jugs, soda, detergent, salad dressing, cooking oil, shampoo, liquid soap, spray products, etc.)
- tubs
- jars
- trays
- disposable cups and plates (non acrylic)
- flower pots
- toys
- buckets
- bundled bags & film (best returned to store)



Cans

- aluminum and steel cans (drink, food, and pet food)
- EMPTY aerosol cans (hairspray, whipped cream, etc.)
- aluminum foil
- pie and cake pans



Glass

- bottles
- jars



Cardboard

- flatten all boxes to less than 4' x 6'
- bundling is preferred but not required
- bundles should be no higher than 6 inches

Paper

- paper towels
- tissues
- napkins
- food-soiled paper plates or cups
- foil gift wrap
- ice cream containers
- wax paper
- laminated paper

Plastic

- styrofoam™ (take to Alpha Ridge for recycling)
- plastic clam shells (packaging for electronics, toys, batteries, berries, baked goods, etc.)
- CDs, DVDs or jewel cases
- acrylic plastic
- motor oil containers
- pesticide bottles
- VHS tapes
- plastic electronics
- juice pouches
- crinkly wrappers from snacks and chips

Cans

- propane cylinders
- beach or lawn chairs
- pots and pans
- scrap metal

Glass

- window glass
- drinking glasses
- mirrors
- ceramics
- crystal
- cookware
- light bulbs

Cardboard

- styrofoam™ inserts
- food-soiled boxes

Please leave lids & caps on containers.

Recycle Outside The Bin

Get Rid of Stuff

Visit www.howardcountymd.gov/WhatShouldIDoWith.htm to find reuse and recycling options for almost everything!

Bulk Item & Scrap Metal Collection

Please consider reuse options first! Pick up of bulk trash items or scrap metal must be scheduled. Call 410-313-6444 or visit HowardCountyBulkPickup.org

Styrofoam™

White foam packaging, clean food trays, cups, containers and egg cartons (all colors) marked with can be recycled at Alpha Ridge Landfill. No foam peanuts, insulation, clamshells or other non-foam #6 containers. www.howardcountymd.gov/Styrofoam.htm

Household Hazardous Waste

HHW items can be taken to the Alpha Ridge Landfill on Saturdays ONLY in April-November. www.howardcountymd.gov/HHW.htm

Composting

The County provides free bins for backyard composting. www.howardcountymd.gov/Composting.htm

Yard Trim Recycling

Use paper bags or reusable containers for curbside yard trim collection or landfill drop-off. www.howardcountymd.gov/YardTrim.htm

Grasscycling

For a healthier lawn, don't bag those nutrient-rich grass clippings, let them lie! www.howardcountymd.gov/Grasscycling.htm



**No yard trim or trash in your recycling container.
Non-see through bags of recyclables will not be collected.
Place carts and items within 5 feet of the nearest public road.**



www.HowardCountyRecycles.org

Recycling Guide for County Collections

YES

NO



Paper

- drink boxes
- milk cartons
- newspaper and inserts
- white or colored paper
- food and snack boxes
- hard and soft cover books
- greeting cards
- non-foil gift wrap
- catalogs and magazines
- junk mail
- phone books
- bagged shredded paper
- three ring binders

Paper

- paper towels
- tissues
- napkins
- food-soiled paper plates or cups
- foil gift wrap
- ice cream containers
- wax paper
- laminated paper
- paper that cannot be torn easily (typically means there are plastic layers added)



Plastic

- bottles (milk jugs, soda, detergent, salad dressing, cooking oil, shampoo, liquid soap, spray products, etc.)
- tubs
- jars
- trays
- disposable cups and plates (non acrylic)
- flower pots
- toys
- buckets
- bundled plastic bags

Plastic

- styrofoam™ (take to Alpha Ridge for recycling)
- plastic clam shells (packaging for electronics, toys, batteries, berries, baked goods, etc.)
- CDs, DVDs or jewel cases
- acrylic plastic
- motor oil containers
- pesticide bottles
- VHS tapes
- plastic electronics
- juice pouches
- crinkly wrappers from snacks and chips



Cans

- aluminum and steel cans (drink, food, and pet food)
- EMPTY aerosol cans (hairspray, whipped cream, etc.)
- aluminum foil
- pie and cake pans

Cans

- propane cylinders
- beach or lawn chairs
- pots and pans
- scrap metal



Glass

- bottles
- jars

Glass

- window glass
- drinking glasses
- mirrors
- ceramics
- crystal
- cookware
- light bulbs



Cardboard

- flatten all boxes to less than 4' x 6'
- bundling is preferred but not required
- bundles should be no higher than 6 inches

Cardboard

- styrofoam™ inserts
- food-soiled boxes

Please
leave lids
& caps on
containers.



No yard trim or trash in your recycling container.
Please do not use non-see through bags for recycling, they will not be collected.



¿Por qué Reciclar?



Vertedero Alpha Ridge

2350 Marriottsville Road

Horario: de 8am a 4pm, de lunes a sábado

El Centro de Conveniencia ARL es gratuito para los residentes del Condado de Howard; solo muestre su licencia de conducir. Usted puede llevar:

- Anticongelantes
 - Electrodomésticos
 - Acumuladores
 - Alfombra y esponja*
 - Ropa & textiles
 - Tanques de gas comprimido
 - Aceite para cocinar
 - Electrónicos (eléctricos o de pilas)
 - Desperdicios peligrosos del hogar
(Solo en sábado, de abril a noviembre)
 - Colchones y box-spring/somieres
 - Metal (pedazos)
 - Aceite automotriz
 - Materiales para construcción reusables
 - Plástico rígido (muebles de patio, juegos, neveras, etc.)
 - Polietileno - Styrofoam™
 - Llantas
 - Podas, ramas, desperdicio de madera*
- *Tiene que pagar cuota

Para obtener más detalles y mapa del Vertedero Alpha Ridge visit www.howardcountymd.gov/ARL.htm

Recuerde...Nada es tan pequeño
¡que no haga una diferencia!

¿Preguntas?

410-313-6444

help@HowardCountyRecycles.org

www.HowardCountyRecycles.org

Twitter: @HoCoRecycles



Reciclaje en el Condado de Howard

Es fácil

En el mismo contenedor coloque papel, plástico, latas, vidrio y cartón reciclable. No tiene que quitar tapas, sólo asegúrese que los envases estén vacíos.

Reduce la basura

Cada artículo reciclado o reusado, es uno menos en la basura. También considere:

- Hacer donaciones a Goodwill o Salvation Army
- Buscar en los anuncios clasificados
- Programas de devolución para CFLs, electrónicos y pilas. Pregunte detalles acerca de esos programas en Best Buy, Home Depot, Lowes, My Organic Market, Staples, etc.

Su contribución cuenta

- ¡Los americanos generamos 4.5 lb de basura al día!
- Reciclar 1 lata de aluminio ahorra suficiente energía para hacer funcionar un televisor 3 horas.
Según la EPA

Horario de días festivos

No habrá recolección los siguientes días festivos:

Año Nuevo Día del Trabajo
Día de Recordación Día de Acción de Gracias
Día de la Independencia Navidad

En los días antes mencionados y el resto de la semana que les sigue TODA basura, reciclaje y podas del jardín se efectuara al día siguiente. Para ver el calendario de recolección en esas fechas, visite:

www.howardcountymd.gov/HolidaySchedule.htm

Guía de Reciclaje para la Recolección del Condado

SI

NO

Papel

- cajas de bebidas
- cartones de leche
- periódicos y anuncios
- papel blanco o de color
- cajas de comida o botanas
- libros de tapa dura o suave
- tarjetas de felicitación
- papel para envoltura (no metálico)
- revistas y catálogos
- volantes publicitarios
- directorios telefónicos
- papel triturado en bolsa
- carpeta de tres aros

Papel

- toallas de papel
- pañuelo facial
- servilletas
- platos o vasos de papel sucios con comida
- papel metálico para envolver
- recipiente de nieve/sorbete
- papel encerado
- papel laminado

Plástico

- botellas (de leche, refresco, detergente, aderezo, aceite de cocina, champú, jabón líquido, atomizadores, etc.)
- tubos
- tarros
- charolas
- platos y vasos
- desechables (no acrílicos)
- macetas
- juguetes
- cubetas
- paquetes de bolsas y de película (de preferencia regréselos a la tienda)

Plástico

- espuma de poliestireno (llévela a Alpha Ridge)
- empaque de plástico (para electrónicos, juguetes, pilas, frutas, repostería, etc.)
- compactos CD, DVD o sus cajas de plástico
- plástico acrílico
- bote de aceite automotriz
- bote de pesticidas
- cintas VHS
- electrónicos de plástico
- bolsas de jugo
- material corrugado para empacar botanas y chips

Latas

- latas de aluminio y metal (bebidas, comida, comida para mascota)
- botes de aerosol VACIAS (laca para el pelo, crema batida, etc.)
- papel de aluminio
- charolas para pastel o tarta

Latas

- cilindros de gas propano
- sillas de playa o jardín
- ollas y sartenes
- pedazos de metal

Vidrio

- botellas
- tarros

Vidrio

- ventanas
- vasos
- espejos
- cerámica
- cristal
- refractarios
- bombillas/focos

Cartón

- Desarme y aplane todas las cajas a menos de 4'x 6'
- Es preferible atarlas, pero no es necesario
- Los atados deben ser de menos de 6" de alto

Cartón

- insertos de poliestireno
- cajas sucias de comida

¡Por favor
tapa los
contenedores!

Reciclaje Fuera Del Contenedor



No Junte Tanta Cosa

Visite www.HowardCountymd.gov/WhatShouldIDoWith.htm
¡Encontrará opciones para casi todo!



Artículos Grandes y Pedazos de Metal

¡Por favor primero considere opciones para reusarlos!
Tiene que programar la fecha para recogerlos llamando al 410-313-6444 o visite www.HowardCountyBulkPickup.org



Poliestireno

Empaque de espuma blanca, charolas de comida limpias, vasos, recipientes y cartones de huevos (de todos colores) marcados con el símbolo pueden ser reciclados en el Vertedero Alpha Ridge. No se aceptan: bolitas de espuma, aislante, empaques de plástico u otros recipientes tipo #6.
www.HowardCountymd.gov/Styrofoam.htm



Desperdicios Peligrosos del Hogar

Artículos HHW (por sus siglas en inglés) pueden ser llevados al Vertedero Alpha Ridge SÓLO los sábados de abril a noviembre.
www.HowardCountymd.gov/HHW.htm



Abono Orgánico

El Condado le proporcionará contenedores gratuitos para hacer abono orgánico en su jardín.
www.HowardCountymd.gov/Composting.htm



Reciclaje Resultado de Podar Su Jardín

Use bolsas de papel o recipientes reusables para llevarlos al vertedero o sáquelos para recolección en la calle.
www.HowardCountymd.gov/YardTrim.htm



Reciclaje de Césped

No tire en bolsas el pasto que cortó, déjelo sobre su jardín, está lleno de nutrientes y ¡su jardín será más saludable!
www.HowardCountymd.gov/Grasscycling.htm



No debe colocar pasto ni basura en su contenedor para reciclaje.
No se aceptan bolsas que no sean transparentes.
Coloque los contenedores rodantes y artículos a 5' de la calle pública más cercana.



www.HowardCountyRecycles.org

재활용을 왜 할까요?

간단합니다

재활용 폐지, 플라스틱, 캔, 유리, 판지를 같은 용기에 넣습니다. 뚜껑이나 상표를 제거할 필요는 없지만, 안에 내용물이 없는지 확인하세요.

쓰레기량 줄이기

재사용 또는 재활용되는 각 물품이 쓰레기 하나를 줄이는 것입니다. 또한 고려해 볼 사항은:

- 굿윌 (Goodwill) 또는 구세군 (Salvation Army)에 기부
- 온라인 항목별 광고판
- CFL(안정기 내장형 소형광등), 폐전자제품 및 폐건전지 무상수거 프로그램. Best Buy, Home Depot, Lowes, My Organic Market, Staples 등에 문의하세요.

참여의 중요성

- 미국에 한명 당 매일 4.5 파운드의 쓰레기를 발생합니다!
- 알루미늄 캔 1 개를 재활용하면 3 시간 동안 티비에 전원을 공급하기에 충분한 에너지를 절약 할 수 있습니다.

휴일 수거 연기 일정

아래 휴일에는 수거를 하지 않습니다:

새 해	노동절
현충일	추수감사절
독립기념일	크리스마스

위에 나열된 휴일과 그 주에는 모든 쓰레기, 재활용품, 정원쓰레기 수거가 다음 날로 연기 됩니다. 휴가 수거 차트는 www.howardcountymd.gov/HolidaySchedule.htm. 에서 참조하세요.

알파 리즈 매립지 (Alpha Ridge Landfill)

2350 Marriottsville Road

운영시간: 오전 8 - 오후 4 시, 월-토

ARL 편의 센터는 하워드 카운티 주민에게 무료입니다. 운전 면허증을 보여주세요.

- 부동액 기기
- 자동차 배터리
- 카펫 & 패딩 *
- 의류 및 섬유
- 압축 가스 탱크
- 식용유
- 전자제품 (플러그 또는 배터리 포함된 것)
- 가정용 유해 폐기물 (4 월-11 월사이 토요일 만)
- 매트리스 및 박스 스프링
- 고철류 (폐기류)
- 자동차 오일
- 재사용 가능한 건축 자재
- 경질 플라스틱 (잔디 가구, 작은 집, 쿨러 등)
- 스티로폼
- 타이어
- 마당 / 목재 폐기물

* 요금 적용

편의점 센터의 지도와 알파 리즈 매립지에 대한 자세한 내용은 www.howardcountymd.gov / ARL.htm 을 방문하세요.

아무리 작은 재활용 이라도 변화를 가져 올 수
있다는것을 기억하세요!
질문이 있으세요?

410-313-6444
help@HowardCountyRecycles.org
www.HowardCountyRecycles.org
Twitter: @HoCoRecycles

하워드 카운티 재활용



카운티 재활용 수거 가이드

허용	비허용
종이류 <ul style="list-style-type: none"> 음료 상자 우유팩 신문지 및 삽입광고 흰색 또는 색지 음식과 간식 상자 양장본 및 종이표지 서적 연하장 	종이류 <ul style="list-style-type: none"> 종이 타올 티슈 냅킨 음식을 담은 종이 접시 또는 컵 포일 선물 포장지 아이스크림 통 웍스를 입힌 종이 비닐 코팅 된 종이
플라스틱 <ul style="list-style-type: none"> 병 (우유, 청량음료, 세제, 샴푸, 드레싱, 식용유, 샴푸, 물비누, 스프레이제품 등) 들통 단지 식판 	플라스틱류 <ul style="list-style-type: none"> 스티로폼 (재활용을 위해 알파 리즈 매립지에 배출하기) 플라스틱 클램셀 포장 (전자제품, 장난감, 건전지, 산딸기, 제과류 등 포장용) 씨디, 디비디, 보석 케이스 아크릴 플라스틱 부동액 통 스넥이나 칩스 포장지
캔류 <ul style="list-style-type: none"> 알루미늄 및 철 캔 (음료수, 음식, 애완동물 음식) 빈 에어로졸 캔 (헤어스프레이, 휘핑크림, 등) 알루미늄 포일 케익 및 케익 접시 	캔류 <ul style="list-style-type: none"> 프로판 용기 비치 체어 또는 야외용 의자 냄비 및 프라이팬 고철류
유리병류 <ul style="list-style-type: none"> 병 단지 	유리병류 <ul style="list-style-type: none"> 창유리 유리컵 거울 도자기 크리스탈 취사도구 페백열전구
판지류 <ul style="list-style-type: none"> 4 x 6 인치 미만의 상자는 납작하게 줄일 것 묶어서 배출하는 것을 선호 하지만 필수는 아님 묶음은 6 인치 이상 높이지 말것 	판지류 <ul style="list-style-type: none"> 스티로폼 완충재 음식 이물질이 묻은 상자

뚜껑과 마개는 용기와 함께 배출해주세요.



정원 쓰레기를 재활용 용기에 배출하지 말아 주십시오.
재활용품을 불투명한 봉지에 넣어 배출하지 말아 주십시오. 수거되지 않습니다.



수거함 외 재활용법

안쓰는 물건 버리기

www.howardcountymd.gov/WhatShouldIDoWith.htm 을 방문해 거의 모든 물건의 재사용 및 재활용 옵션을 알아보세요.

대용량 쓰레기 및 고철 수거

먼저 재사용 옵션을 고려하기 바랍니다! 대용량 쓰레기 항목이나 고철 수거는 예약을 해야합니다. 410-313-6444 로 문의하거나 HowardCountyBulkPickup.org 를 방문하세요.

스티로폼

알파 리즈 매립지에서는 흰색 발포 포장재, 깨끗한 음식 식판, 컵, 용기 그리고 모든 색상의 계란 판지에 표시가 있으면 재활용합니다. 발포 피넛, 단열재, 클램셀 포장 또는 발포가 아닌 #6 용기는 받지 않습니다.

가정용 유해 쓰레기 (HHW)

알파 리즈 매립지에서는 HHW 항목 쓰레기를 4 월-11 월 사이 토요일에만 받습니다. www.howardcountymd.gov/HHW.htm

정원 손질 쓰레기

골목길 연석 수거나 매립지 배출 경우 종이 봉투 또는 재사용 가능한 용기를 사용하세요. www.howardcountymd.gov/YardTrim.htm

퇴비화

카운티에서는 뒷마당 퇴비화를 위해 무료로 통을 제공합니다. www.howardcountymd.gov/Composting.htm

잔디 재활용

더욱 건강한 잔디를 위해 영양이 풍부한 잘린 잔디를 버리지 말고, 그냥 누어있게 나두세요!
<http://www.howardcountymd.gov/Grasscycling.htm>

Holiday Slide Schedule:

Your curbside collections may be affected by:

New Year's Day	Labor Day
Memorial Day	Thanksgiving Day
Independence Day	Christmas Day

For a holiday listed above and the rest of that week, ALL trash, recycling and yard trim collections will slide to the next day.

Holidays that do NOT affect collection include: Martin Luther King Jr. Day, President's Day, Good Friday, Columbus Day, and Veteran's Day.

Inclement Weather:

Every effort will be made to continue to provide scheduled collections. If collections are cancelled due to severe weather, all collections (trash, recycling and yard trim) will slide and be made one day later that week, if possible.

Visit www.HowardCountyRecycles.org or call (410) 313-6444 for cancellation and make-up information.

Tips to reduce your trash by 80%

- Recycle unlimited quantities of acceptable items on your recycling day. Visit our website for a list of acceptable items.
- Grasscycle by leaving grass clippings on your lawn. This means less work for you and provides free fertilizer for your lawn.
- Compost grass, leaves, yard trimmings and select food scraps. Use the finished product to amend your lawn, flower beds and vegetable gardens. **Free compost bins** are available to Howard County residents at 6751 Columbia Gateway Dr. Suite 514 and Alpha Ridge Landfill.
- Donate usable items to charities such as Goodwill, Salvation Army, etc. to keep good items out of the trash.

Bulk Items and Scrap Metal:

Pickup of **bulk trash items must be scheduled** by calling 410-313-6444 or visiting HowardCountyBulkPickup.org.

Bulk trash items such as mattresses, box springs and furniture will be collected. After scheduling, place these items at curb on your regular trash day. A maximum of 4 bulk trash items will be collected per pickup. Items must be able to be lifted by two collection crew members (larger/unaccepted items will be tagged and left for the resident's disposal).

Pickup of **scrap metal items must be scheduled** by calling 410-313-6444. After scheduling, you will be given your collection day. Restrictions may apply.

Items NOT Accepted

- Batteries*
- Carpets/Rugs
- Chairs with electric plugs
- Compressed gas tanks*
- Computer monitors*
- Construction & demolition debris
- Drum containers/fuel & oil tanks
- Medical waste
- Mirrors/plate glass
- Motorized toys*
- Pallets*
- Picnic tables (wooden)
- Playhouses/swing sets (wooden)
- Recliners
- Sofa beds
- Stumps & logs*
- Tires*
- TVs*

*These items can be recycled at Alpha Ridge Landfill (2350 Marriottsville Road, Marriottsville).



Trash

Your Guide to Howard County's Trash Service



Many items we often consider to be trash can be recycled, reused or donated. Please consider reuse/recycle options first.

Bureau of Environmental Services
6751 Columbia Gateway Drive
Suite 514, Columbia, MD 21046
410-313-6444

www.HowardCountyRecycles.org

What will be collected?

Household trash must be packaged to fit the size, weight and quantity restrictions below:

- Four (4) items on each collection day. This includes up to four cans, bags or bundles.
- Each can, bag or bundle must be **less than 40 pounds**.
- Bundles must be less than 4 feet in length, less than 18" in diameter and less than 40 pounds.
- For bulk pickup information, see back panel.

What will NOT be collected?

- Liquids such as paint, cooking oil, chemicals and motor oil (which can leak onto the streets).
- Hazardous, toxic or flammable materials - asbestos, ammunition, explosives, dead animals, firearms, etc.
- Car parts - tires, wheels, batteries, etc.
- Landscape and construction debris - dirt, rocks, stumps, concrete, sod, drywall, lumber, plywood, etc.
- Cart-type containers larger than 40-gallons containing loose trash will not be serviced.
- Yard trimmings may not be put out as trash during yard trim season in areas that receive curbside yard trim collection. Yard trim season is April 1st through the third week in January.
- **Trash placed in County-provided recycling containers will not be serviced.**

Note: Many of these items can be taken to the Alpha Ridge Landfill for recycling and disposal. Visit www.howardcountymd.gov/ARL.htm or call 410-313-6444 for details.

How to prepare trash:

Residents may utilize reusable containers or disposable bags.

Reusable containers must be:

- Made of metal or tough plastic and equipped with handles and watertight, well-fitting lids.
- Maximum 40-gallon capacity. If containers are larger than 40 gallons, each bag inside is counted as one item.
- Cart-type containers larger than 40 gallons should not be used.

Note: Reusable containers may be required in townhome communities or in areas where previous sanitation problems or rodent infestations have been identified.

Disposable trash bags must be:

- Heavy gauge plastic that can be picked up and carried without tearing.
- Securely tied at the top to prevent spillage.



Note: The clean-up of trash or recycling, especially in grouping locations, that is spilled and/or spread by animals or wind is the responsibility of the residents.

Where to place trash:

- Residents of single family homes must place trash to be collected within five (5) feet of the nearest public road fronting the home.
- Place cans, bags, carts, etc. away from cars, mailboxes and fire hydrants on the opposite side of the driveway, if possible.
- Residents of townhome communities without garages are required to group items in designated areas accessible to the collectors, such as the curb end of grass islands or at the end of parking areas.
- Do not block mailboxes or fire hydrants.

When are collections?

- Trash is collected on your scheduled collection day between the hours of 6 a.m. and 7 p.m. Pickup times may vary week to week.
- Items must be placed out after 6 p.m. the night before collection or before 6 a.m. the day of collection. Please do not set items out days in advance of your collection day.
- **Contractors will not return to collect items set out after the truck has serviced the area.**
- Collections missed due to road closings will be made the next day, if possible.



Calendario para días festivos:

Su calendario pudiera cambiar en estos días:

Día del Trabajo	Año Nuevo
Día de Recordación	Día de Acción de Gracias
Día de la Independencia	Navidad

Para los días festivos antes mencionados y el resto de esa semana, TODO la basura y reciclaje se recogerán al día siguiente del usual.

Días festivos **NO** afectados incluyen: Día de Martin Luther King, Jr., Día del Presidente, Viernes Santo, Día de la Raza y Día de los Veteranos.

Por inclemencia del tiempo:

Haremos lo posible por seguir el calendario normal. Si se tiene que cancelar su día de recolección de basura, reciclaje o podas, de ser posible se recogerá al día siguiente en esa semana.

Visite www.HowardCountyRecycles.org o lláme al 410-313-6444 para mayor información.

Para reducir la basura un 80%

- Recicle cantidades ilimitadas de artículos aceptables su día de reciclaje Visite nuestra web para una lista de artículos aceptables.
- Recicle el pasto, deje lo que podó sobre su jardín. ¡Se ahorra trabajo y fertiliza su jardín gratis!
- Haga abono orgánico con pasto, hojas, podas del jardín y ciertos desperdicios de comida. Con este abono orgánico Ud. puede fertilizar su césped, flores, y jardín de vegetales. Contenedores para abono orgánico gratuitos, están disponibles para los residentes del Condado de Howard en el Vertedero Alpha Ridge en 6751 Columbia Gateway Dr. #514
- Done los artículos que todavía pueden usarse a organizaciones sin fines de lucro tales como: Goodwill, Salvation Army, etc. para mantener cosas buenas fuera de la basura.

Cantidades grandes y chatarra:

Para que se recojan grandes cantidades **usted debe programar la fecha** llamando al 410-313-6444 o visitando www.HowardCountyBulkPickup.org.

Para basura grande como colchones/box/somier y muebles. Después de programar la fecha, colóquelos en la acera en donde está designado colocar basura. Máximo 4 artículos grandes serán recogidos. Debe ser posible que dos personas del servicio puedan cargarlos (artículos más grandes o rechazados, serán etiquetados y dejados para que el residente se deshaga de ellos).

Para que se recoja **chatarra tiene que programar la fecha** llamando al 410-313-6444, le dirán que día pueden ir por ella. Hay restricciones.

NO se aceptan:

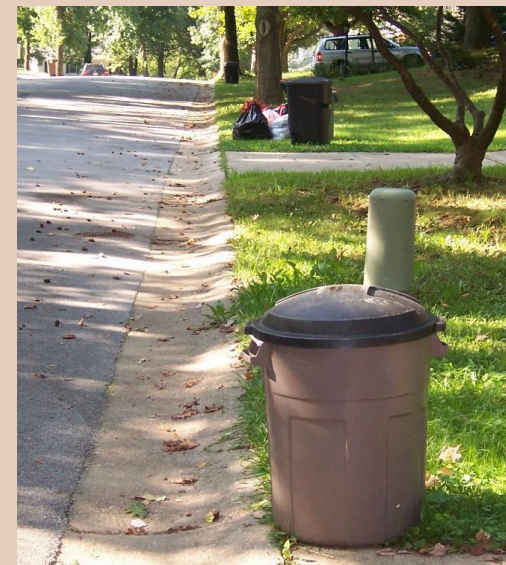
- Acumuladores/pilas*
- Alfombras / Tapetes
- Sillones eléctricos
- Tanques de gas*
- Pantalla de ordenador*
- Escombros
- Tanques de aceite o combustible
- Desechos médicos
- Espejos/vidrio metalizado
- Juguetes de motor*
- Tarimas*
- Mesas de picnic (madera)
- Juegos/columpios (de madera)
- Sillones reclinables
- Sofacama
- Tocones y troncos*
- Llantas*
- Televisores*

*Se pueden reciclar en el Vertedero Alpha Ridge (2350 Marriottsville Road, Marriottsville)



Basura

Guía para el Servicio de Recolección de Basura del Condado de Howard



Tiramos muchas cosas que no son basura. Por favor, primero considere reciclar, reusar o donar antes que tirar a la basura

Departamento de Servicios Ambientales
(Bureau of Environmental Sciences)
6751 Columbia Gateway Drive
Suite 514, Columbia, MD 21046
410-313-6444

www.HowardCountyRecycles.org

¿Qué será recogido?

La basura de su casa debe ser empacada para cumplir con las restricciones de tamaño, peso y cantidad especificada a continuación:

- Cuatro (4) artículos por ocasión. Incluye hasta cuatro botes, bolsas o paquetes.
- Cada bote, bolsa o paquete debe pesar menos de 40 libras.
- Los paquetes deben ser de menos: de 4 pies de largo, 18" de diámetro y 40 libras de peso.
- Para que se recojan artículos grandes vea al reverso.

¿Qué NO será recogido?

- Líquidos (como pintura, aceite para cocinar, productos químicos, aceite automotriz – pues pueden derramarse en la calle).
- Materiales peligrosos, tóxicos o inflamables - asbestos, municiones, explosivos, armas de fuego, animales muertos, etc.
- Autopartes (llantas, rines, acumuladores, etc.)
- Desperdicios de jardín y escombro de construcción- tierra, rocas, ramas, concreto, tabla-roca, tablas, triplay, etc.
- No se acepta basura suelta dentro de los contenedores rodantes de más de 40 gal.
- NO se pueden sacar podas a la acera como si fuera basura durante la época de podar (del 1 de abril hasta la tercera semana de enero).
- **Basura adentro de los contenedores de reciclaje del Condado, NO será recogida.**

Nota: Muchos de estos artículos pueden ser llevados al Vertedero Alpha Ridge para tirarlos o reciclarlos. Para más detalles, Visite www.howardcountymd.gov/ARL.htm o llamo 410-313-6444 para detalles.

Como acomodar la basura:

Los residentes pueden utilizar contenedores reutilizables o bolsas desechables.

Los contenedores reutilizables deben ser:

- Hechos de metal ó plástico rígido, con agarraderas y tapas herméticas
- Con capacidad máxima de 40 galones. Si son más grandes, cada bolsa adentro del mismo, cuenta como un artículo.
- No debe usar contenedores rodantes de más de 40 galones.

Nota: pudiera ser obligatorio utilizar contenedores reusables en comunidades multifamiliares o lugares identificados con problemas sanitarios o infestación de roedores.

Las bolsas desechables deben:

- Ser de plástico grueso para que no se rompan al ser levantadas.
- Estar bien atadas para que no se desparrame el contenido.



Nota: Los residentes son responsables de limpiar la basura o reciclables que se desparraman debido al viento o animales, en particular en donde se agrupan los botes o contenedores.

Donde colocar la basura:

- Residentes de casa unifamiliar deben colocar la basura a 5 pies de distancia de la calle pública más cercana al frente de la casa.
- Coloque las botes, bolsas, contenedores, etc. alejados de carros, buzones o hidrantes en el lado opuesto del acceso, si es posible.
- Residentes de multifamiliares sin cochera, deben agruparlos en áreas accesibles designadas, tales como la acera, las islas de grama o al final del estacionamiento.
- No obstaculice buzones ni hidrantes.

¿Cuándo se recogerá?

- La basura se recogerá según su calendario entre 6 AM y 7 PM. El horario cambia según el día.
- Debe sacar la basura después de las 6 PM de la noche antes del día en que será recogida, o el día que le toca pero antes de las 6 AM. Por favor no la saque días antes del día designado.
- **Los contratistas no regresarán a recoger artículos sacados tarde.**
- Si las calles están cerradas, la basura se recogerá al día siguiente, si es posible.



휴일 수거 연기 일정

연석 수거는 다음 공휴일 동안 영향을 받을 수도 있습니다.

신년	노동절
현충일	추수 감사절
독립 기념일	크리스마스

위에 나열된 공휴일과 그 한 주 동안은 모든 쓰레기, 재활용품 그리고 정원 손질 쓰레기의 수거가 다음날로 연기됩니다.

수거에 영향을 받지 않는 공휴일은:

마틴 루터 킹의 날, 대통령의 날, 금요일, 콜럼버스의 날, 그리고 재향 군인의 날.

약천후

예정된 수거 서비스를 제공하기 위한 노력을 다 할 것입니다. 수거가 혹독한 기상 상황 때문에 취소될 경우, 가능한 그 주에 하루 연기되어 모든 수거 (쓰레기, 재활용품과 정원 손질 쓰레기)가 이루어질 것입니다. 취소나 보충 수거 정보는

www.HowardCountyRecycles.org 에서 참조하거나 (410) 313-6444 로 문의하십시오.

쓰레기 80 프로 줄이는 유용한 정보

- 허용되는 항목의 재활용품을 재활용 수거일에 무제한으로 내놓으세요. 허용되는 재활용품 목록은 웹 사이트에 있습니다.
- 잔디밭에 자른 잔디를 놔두어 잔디 재활용을 합니다. 이렇게 함으로 여러분은 일거리가 줄고 잔디에 무료로 비용을 주게 되는 것입니다.
- 잔디, 나뭇잎, 정원 손질 쓰레기와 선별된 음식물 쓰레기를 퇴비화합니다. 완성된 퇴비를 사용해 잔디밭, 화단과 채소 정원을 개선하십시오. 하워드 카운티 주민을 위한 무료 퇴비통은 6751 Columbia Gateway Dr. Suite 514 와 알파 리지 매립지에서 제공됩니다.
- 좋은 물건이 쓰레기가 되지 않게 사용 가능한 물품은 굿윌 (Goodwill), 구세군 (Salvation Army) 등 자선 단체에 기부하십시오.

대형 폐기물 및 고철

대형 폐기물 항목의 수거는 410-313-6444 에 문의 또는 HowardCountyBulkPickup.org 를 방문하여 예약을 해야합니다.

매트리스, 박스 스프링, 가구 등 대형 쓰레기 항목은 수거됩니다. 예약 후 일반 쓰레기 수거 날에 연석에 내놓으십시오. 매번 최대 네 개의 대형 쓰레기 물품이 수거됩니다. 물품은 두 명의 수거인이 들을 수 있어야 합니다. (너무 큰 것/ 비허용 항목의 물품은 꼬리표를 달아 거주자의 처분을 위해 남겨둡니다.)

고철 항목의 수거는 410-313-6444 로 문의하여 예약을 해야합니다. 예약 후, 수거일시를 받게 될 것입니다. 제한 사항이 적용될 수 있습니다.

비허용 항목

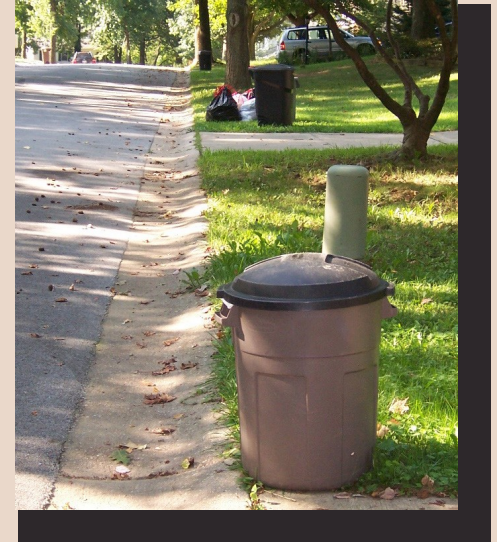
- | | |
|--------------------|--------------------|
| • 건전지* | • 거울/판유리 |
| • 카펫/융단 | • 모터달린 장난감* |
| • 전기 플러그가 달린 의자 | • 펠릿 (화물 운반대)* |
| • 압축 가스 탱크* | • 피크닉용 테이블 (목재) |
| • 컴퓨터 모니터* | • 장난감 집/그네 세트 (목재) |
| • 건축 및 철거 자재 부스러기 | • 뒤로 젖히는 안락의자 |
| • 드럼 컨테이너/연료 기름 탱크 | • 소파 겸용 침대 |
| • 의료 폐기물 | • 나무 그루터기 및 통나무 * |
| | • 타이어* |
| | • 텔레비전* |

* 항목들은 알파 리지 매립지에서 재활용 할 수 있습니다. (2350 Marriottsville Road, Marriottsville).



쓰레기

하워드 카운티 쓰레기 처리 안내서



우리가 종종 쓰레기로 간주하는 많은 물품이 재활용, 재사용 또는 기부될 수 있습니다. 재사용/재활용을 먼저 고려하십시오.

환경 서비스국
(Bureau of Environmental Services)
6751 Columbia Gateway Drive
Suite 514, Columbia, MD 21046
410-313-6444

www.HowardCountyRecycles.org

무엇을 수거합니까?

가정용 쓰레기는 아래의 크기, 무게 및 수량 제한에 맞게 포장해야 합니다:

- 각 수집 일에 (4) 개의 항목. 이것은 플라스틱 통, 봉지 또는 꾸러미 4 개까지 포함됩니다.
- 각 플라스틱 통, 봉지 또는 꾸러미는 **40 파운드 미만**이어야 합니다.
- 각 꾸러미의 길이는 길이 4 피트 이하, 지름 18 인치 이하 그리고 40 파운드 이하이어야 합니다.
- 대용량 수거 정보는 뒷면을 참조하십시오.

무엇이 수거되지 않습니까?

- 페인트, 식용유, 화학 물질 및 엔진 오일 등의 액체(거리로 누출될 수 있습니다).
- 유해 독성 또는 인화성 물질 - 석면, 탄약, 폭발물, 죽은 동물, 총기 등.
- 자동차 부품 - 타이어, 바퀴, 건전지 등 .
- 조경 및 건축 자재 부스러기 - 흙, 바위, 나무 그루터기, 콘크리트, 잔디, 석고, 목재, 합판 등.
- 40 갤런보다 큰 카트형 컨테이너에 묶여 있지 않은 쓰레기는 수거되지 않습니다.
- 정원 손질을 하는 계절 동안 연석 수거 서비스를 받는 지역에서는 정원 손질 후 나오는 잔여물을 쓰레기로 배출하지 마십시오. 정원 손질 계절은 4 월 1 일부터 1 월 세 번째 주까지입니다.
- 카운티에서 제공하는 재활용 용기에 넣은 쓰레기는 수거되지 않습니다.

참고: 이 항목의 대부분은 알파 리지 매립지에서 재활용 및 폐기물로 배출할 수 있습니다. 자세한 내용은 www.howardcountymd.gov/ARL.htm 에서 참조하거나 410-313-6444 로 문의하세요.

쓰레기 배출 요령:

주민들은 재사용이 가능한 용기나 일회용 봉지를 사용할 수 있습니다.

재사용 용기는:

- 손잡이가 있고 물이 새지 않는 뚜껑이 있는 금속이나 단단한 플라스틱 재질.
- 최대 40 갤런 용량. 용기가 40 갤런보다 클 경우, 내부의 각 봉지가 하나의 항목으로 계산됩니다.
- 40 갤런보다 큰 카트형 용기는 사용하지 않아야 합니다.

참고 : 타운 홈 공동체 또는 이전에 위생 문제나 설치류 감염이 확인된 지역에서는 재사용 용기가 필요할 수 있습니다.

일회용 쓰레기 봉투는:

- 집어 옮길 때 찢어지지 않는 두꺼운 플라스틱 재질로 된 것
- 쓰레기가 유출 되지 않게 봉지 입구를 꼭 묶어 놓을 것.



참고: 특히 그룹으로 수거되는 지역에서 동물이나 바람 때문에 펼쳐졌거나 유출된 쓰레기와 재활용품의 청소는 주민의 책임입니다.

쓰레기 배출 장소

- 단독 주택의 거주자는 수거 할 쓰레기를 집 앞 5 피트 내에 있는 공공 도로에 배치해야 합니다.
- 통, 봉지, 카트 등은 차, 우편함 및 소화전에서 가능한 한 멀리 진입로 반대편에 놓아주세요.
- 차고가 없는 타운 홈 지역 주민께서는 지정된 연석 끝의 잔디 섬 또는 주차장의 끝 구역처럼 수거인이 접근할 수 있는 곳에 수거품을 모아놓아야 합니다.
- 우편함이나 소화전을 막지 마십시오.

언제 수거합니까?

- 쓰레기는 예정된 수거 당일 오전 6 시 부터 오후 7 시 사이에 수거 됩니다. 수거 시간은 매주 다를 수 있습니다.
- 수거품들은 수거일 전날 밤 오후 6 시 이후 또는 수거일 아침 오전 6 시 이전에 내놓아야 합니다. 수거일 전에 수거품을 미리 내놓지 마십시오.
- **협력 업체 트럭은 이미 다녀간 지역에 수거 후 내놓인 수거품을 재방문하여 거둬가지 않습니다.**
- 도로 폐쇄 때문에 밀린 수거는 가능한 다음 날 실시 될 것입니다.



Yard Trim Recycling Options for ALL County Residents

Rake and Take Program

Match yourself (Raker) with someone who needs material for their compost bin (Taker). For more details, call the Howard County Master Gardeners at 410-313-2707.



Drop-off

Recycle your yard trim at the Alpha Ridge Landfill from 8 a.m. to 4 p.m., Monday–Saturday.

Proof of Howard County residency required.

Take yard trim recycling to the next level!

Grasscycle

Save time, energy and money by leaving grass clippings on your lawn to return nutrients to the soil and improve lawn quality. Grasscycling is recommended by lawn care professionals and helps the Chesapeake Bay by eliminating fertilizer needs.

Compost

Mix leaves, grass clippings and vegetable scraps together and watch the decomposition process turn these items into a natural soil amendment.

Compost demonstrations are offered by the Master Gardeners in the spring, summer and fall. **Free compost bins** are available to Howard County residents at 6751 Columbia Gateway Drive, Suite 514 and Alpha Ridge Landfill.

Christmas Tree Collection

December 26 through the third week in January

Place clean, undecorated trees out for collection on your recycling day.

YES - We will collect:

Whole trees under 6 feet or trees over 6 feet that are cut in half.



NO - We can't collect:

- Trees with metal or plastic bases
- Trees with tinsel, icicles or any other ornaments or materials
- Trees wrapped in plastic bags
- Artificial trees (please recycle with scrap metal at Alpha Ridge Landfill)

Other options:

- Merry Mulch Drop-off locations, including designated County parks and the Alpha Ridge Landfill Woodwaste Area. Check online or call for a complete list of sites.
- Check local nurseries for tree chipping services.



Yard Trim

Your Guide to Howard County's Yard Trim Collection Service



Bureau of Environmental Services
6751 Columbia Gateway Drive
Suite 514, Columbia, MD 21046
410-313-6444

www.HowardCountyRecycles.org

Curbside Yard Trim Collection

April 1 through the third week in January

Howard County collects curbside yard trim from homes in most areas on County roads and some approved private roads.

How to recycle...

- Unlimited quantities of grass, leaves and light brush can be put out for collection on your recycling day. Items must be at the curb by **6 a.m.** the day of collection.
- Set your yard trim out in reusable containers or in paper or plastic bags.
- Tie brush and branches together with string or twine. Bundles may not exceed 18" in diameter and 4' in length.
- Yard trim may not be put out as trash during the yard trim collection season in areas that receive curbside yard trim service.
- Remember the **40 pound weight** limit for cans, bags and bundles.

How will holidays affect my collection?

There will be no collection on the following County holidays:

New Year's Day	Labor Day
Memorial Day	Thanksgiving Day
Independence Day	Christmas Day

For a holiday listed above and the rest of that week, ALL trash, recycling and yard trim collections will slide to the next day. For a chart of your holiday collections, visit howardcountymd.gov/HolidaySchedule.htm

YES - We will collect:

- Grass
- Leaves
- Hedge clippings/light brush
- Small limbs or branches less than 4" in diameter and 4' in length
- Seed pods (pine cones, sour gum balls, etc)
- Straw/hay
- Bamboo

NO - We can't collect:

- Bushes with root bases attached
- Logs
- Yard trim placed in recycling carts and cardboard boxes
- Yard trim mixed with trash or miscellaneous materials, such as:
 - Plastic/clay pots
 - Fruits, vegetables or nuts
 - Dirt, rocks, sod or sand
 - Metal wire or fencing
 - Glass, pottery or stone

Where to place items for collection

- Single family homeowners must place items within five (5) feet of the nearest public road fronting their homes.
- Place cans, bags, etc. away from mail boxes on the opposite side of the driveway, if possible.
- Residents in townhome communities with head-in parking areas are required to group items in designated areas. Do not block mailboxes or fire hydrants.

Did You Know?

- The truck that picks up your yard trim may arrive earlier or later than the other recycling truck.
- Material collected is composted or mulched and residents can purchase the finished products at the Alpha Ridge Landfill.
- Yard trim is accepted year-round at the Alpha Ridge Landfill Woodwaste Area. Plastic bags are restricted, however reusable containers and paper bags are welcome.
- Grass clippings placed in plastic bags often create condensation, which can leak or spill. Try grasscycling instead.

Paper Yard Trim Bags

Howard County encourages residents to use paper bags or reusable containers for yard trim instead of plastic bags.

Why Paper Bags?

- Paper bags decompose naturally with yard trim while plastic bags do not. Plastics reduce the quality of the finished compost.
- Paper bags can hold the same amount as plastic bags, but won't puncture as easily.
- Paper bags can stay open for easy filling.



Questions?

Howard County Bureau of Environmental Services
410-313-6444
Howard County Master Gardeners
410-313-2707
University of MD Home and Garden Info Center
1-800-243-2507

Specialty Recycling

While this guide focuses on office recycling, the same principles can apply to recycling all types of waste. For more information contact: www.mdrecycles.org

- Appliances
- Asphalt, Bricks and Concrete
- Batteries
- Bulbs, CFL's and Fluorescents
- Carpet and Carpet Padding
- Ceiling Tiles
- Drywall
- Dirt, Sand and Clean Fill/Soil
- Electronics
- Glass (Window and Plate)
- Gypsum
- Metals
- Mixed Construction and Demolition Debris
- Motor Oil and Antifreeze
- Paper and Paper Shredding
- Pallets
- Produce
- Roof Shingles
- Textiles
- Tires
- Toner Cartridges
- Vinyl and PVC Scrap
- Wood Waste



www.howardchamber.com/recycling
www.howardcountyrecycles.org



Recycling Guide for the Business, Educational and Institutional Communities



Good for Business
Good for the Environment
It Just Makes Sense



Using This Guide

Recycling has been around for many years but it is just now hitting its stride as businesses and the government are looking for ways to be environmentally sensitive in a fiscally responsible manner.

At the request of Howard County Executive Ken Ulman, the Howard County Chamber of Commerce in conjunction with individuals from the business, institutional and educational communities and the Howard County Government have joined forces to create sustainable initiatives for the non-residential community.

This guide is meant to help give direction for the recycling needs in the commercial community by providing information and the resources available in Howard County as well as the surrounding area. This brochure also provides web links and phone numbers to help a business or institution begin its recycling process.

Getting Started
From the Workspace to the Recycling Facility

Establishing your recycling program:

- Identify which of your waste disposal items are recyclable.
- Select new containers or retrofit existing containers to separate trash and recyclable items.
- Contact your recycling collection vendor of choice and establish which is the best program and pick-up container for your needs.
- Select the best location for your pick-up container and make sure it is clearly marked as recyclable materials only.
- Educate your employees and patrons about your recycling program and post proper signage and instructions.
- Educate your janitorial services or employees that will be handling the recyclable materials from the workplace to the collection point.
- Continually monitor your program for compliance and quality.



Single Stream / Co-Mingled Recycling

All together now!

Recyclable & non-recyclable items

Accepted

- Aluminum and Steel Cans
- Brown Paper Bags
- Cardboard
- Clean Foil Trays
- Computer and Fax Paper
- Copy and Printing Paper
- Folders and Report Covers
- Glass Bottles & Jars
- Hanging Files (no metal)
- Hard and Soft Cover Books
- Index Cards
- Junk Mail and Envelopes
- Magazines
- Manila File Folders
- Margarine or Yogurt Containers
- Newspapers and Inserts
- Non-Metallic Gift Wrap
- Office & Shredded Paper
- Plastic Bottles
- Sticky Notes

Not Accepted

- Drinking Glasses
- Food Contaminated Paper
- Laminated Paper
- Light Bulbs
- Mirrors
- Motor Oil Bottles
- Mylar Sheets
- Photographic/Carbon Paper
- Styrofoam
- Window Glass

*shredded paper must be bagged.



Two Recycling Options



Individual Contracting

For larger companies that have significant recycling needs it may be more cost effective and efficient to contract individually with a waste disposal company that also handles recycling.

In many cases, recycling can be a cost-savings measure over the cost of solid waste disposal.

There are several area waste management companies that provide recycling collections for organizations with larger disposal requirements. While we do not endorse any one company, each has been in the region for a number of years.

AbitibiBowater
 6401 Quad Avenue, Suite B
 Baltimore, MD 21205
 410-588-1704
www.abitibibowater.com

Allied Waste Services of Baltimore
 260 W. Dickman Street
 Baltimore, MD 21230
 410-727-6161
www.disposal.com

Jenn-Kans
 5135 Frolich Lane
 Tuxedo, MD 20781
 410-313-9800
www.jennkans.com

Waste Management Recycle America
 6994 Columbia Gateway Drive, Suite 200
 Columbia, MD 21046
 410-796-7010
www.wm.com



Co-op Recycling

The Howard County Chamber of Commerce is sponsoring a Recycling Cooperative to assist businesses lower costs. Education and information sessions are being conducted. To learn about the Cooperative go to the Chamber website at www.howardchamber.com.

