

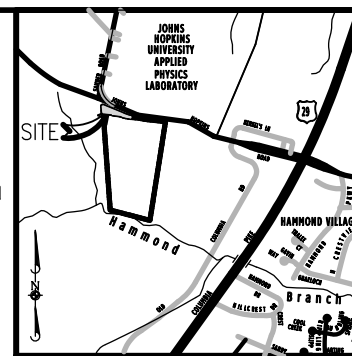
LINE TABLE		
LINE	BEARING	DISTANCE
L1	S67°54'09"E	54.87'
L2	S69°14'55"E	66.38'
L3	S71°23'10"E	32.15'
L4	S83°53'09"E	139.07'
L5	N84°24'21"W	77.79'
L6	N81°07'20"W	65.81'
L7	N07°59'10"W	9.88'

#### NOTES:

COORDINATES SHOWN HEREON ARE BASED IN THE MARYLAND STATE REFERENCE SYSTEM, NAD '83/'91 AS PROJECTED BY HOWARD COUNTY GEODETIC CONTROL STATIONS HOPKINS AND 41EA

THIS PLAT IS BASED ON A FIELD RUN BOUNDARY SURVEY PERFORMED ON OR ABOUT APRIL, 2008 BY WHITMAN, REQUARDT & ASSOC.

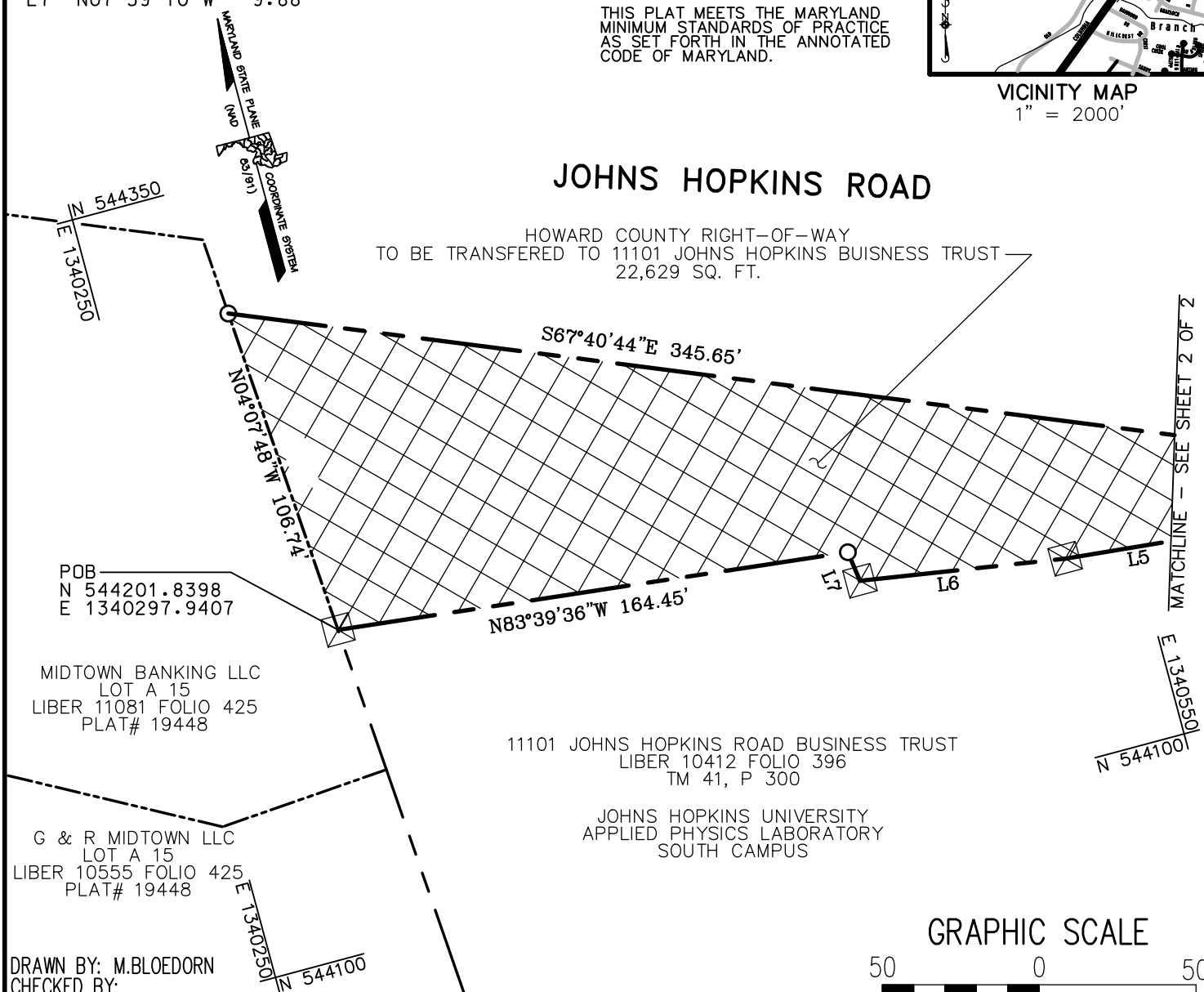
THIS PLAT MEETS THE MARYLAND MINIMUM STANDARDS OF PRACTICE AS SET FORTH IN THE ANNOTATED CODE OF MARYLAND.



VICINITY MAP  
1" = 2000'

## JOHNS HOPKINS ROAD

HOWARD COUNTY RIGHT-OF-WAY  
TO BE TRANSFERRED TO 11101 JOHNS HOPKINS BUSINESS TRUST  
22,629 SQ. FT.



DRAWN BY: M.BLOEDORN  
CHECKED BY:

**WR&A**

Whitman, Requardt and Associates, LLP  
Engineers, Planners and Surveyors  
801 South Caroline Street  
Baltimore, Maryland 21231  
(410) 235-3450

#### LEGEND



ROW AREA TO  
BE TRANSFERRED



4"X4" CONCRETE  
MONUMENT FOUND

#### GRAPHIC SCALE



SCALE: 1" = 50'

SHEET 1 OF 2

#### REVISION

PLAT NO.

PROJECT NO.

SCALE: 1"=50'  
DATE: 6/23/2009

HOWARD COUNTY DEPARTMENT OF PUBLIC WORKS  
FEE SIMPLE TRANSFER OF ROW  
TO BE RELEASED TO  
11101 JOHNS HOPKINS ROAD BUSINESS TRUST  
T.M. 41 PARCEL 300 & LIBER 10412 FOLIO 396  
FIFTH ELECTION DISTRICT  
HOWARD COUNTY, MARYLAND

APPROVED:  
DEV. ENGINEERING DIVISION

DATE

REAL ESTATE SERVICES  
DIVISION

DATE