

Amendment 1 to Amendment 14 to Council Bill No. 26-2012

BY: Chairperson at the request
of the County Executive

Legislative Day No. 10
Date: July 26, 2012

Amendment No. 14

(This amendment makes technical corrections to distinguish between the PSA for water and sewer service and the water service only area.)

1 On page 1, strike the description and substitute:

2 *“This amendment makes technical corrections to maps, figures and text.”*

3

4 On page 1, in line 2, insert:

5 “On page 29, remove map 4-1 and substitute a revised map 4-1, as attached to this Amendment.

6 On page 55, remove map 5-1 and substitute a revised map 5-1, as attached to this Amendment.

7 On page 69, in the first paragraph under the heading “Expansion of the Planned Service Area”, in

8 the first sentence, after “Area” insert “for water and sewer service”.

9 On page 70, remove map 6-2 and substitute a revised map 6-2, as attached to this Amendment.

10 On page 72, remove map 6-3 and substitute a revised map 6-3, as attached to this Amendment.”.

11

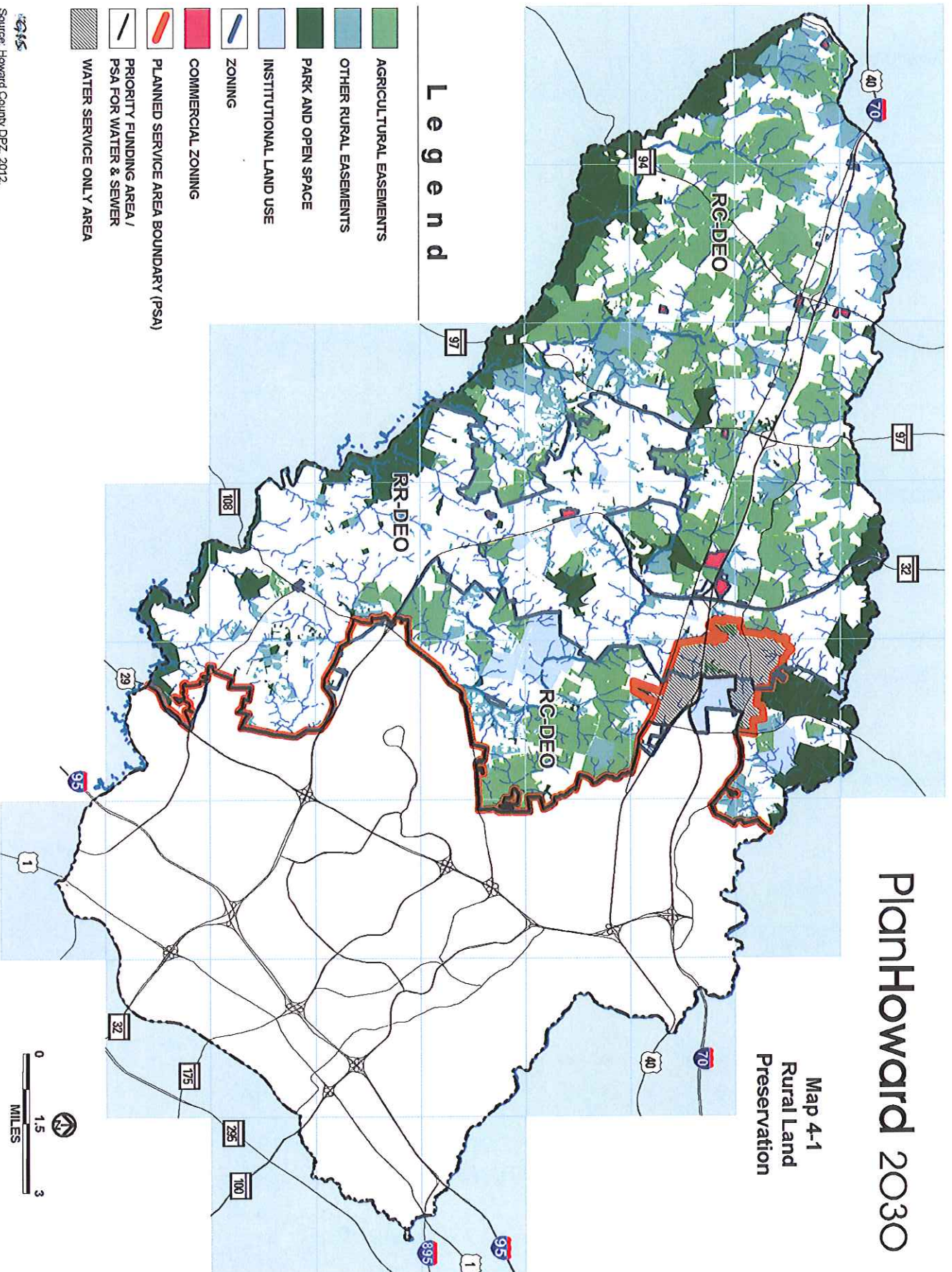
12 On page 1, after line 3, insert:

13 “On page 114, remove map 8-1 and substitute a revised map 8-1, as attached to this

14 Amendment.”.

PlanHoward 2030

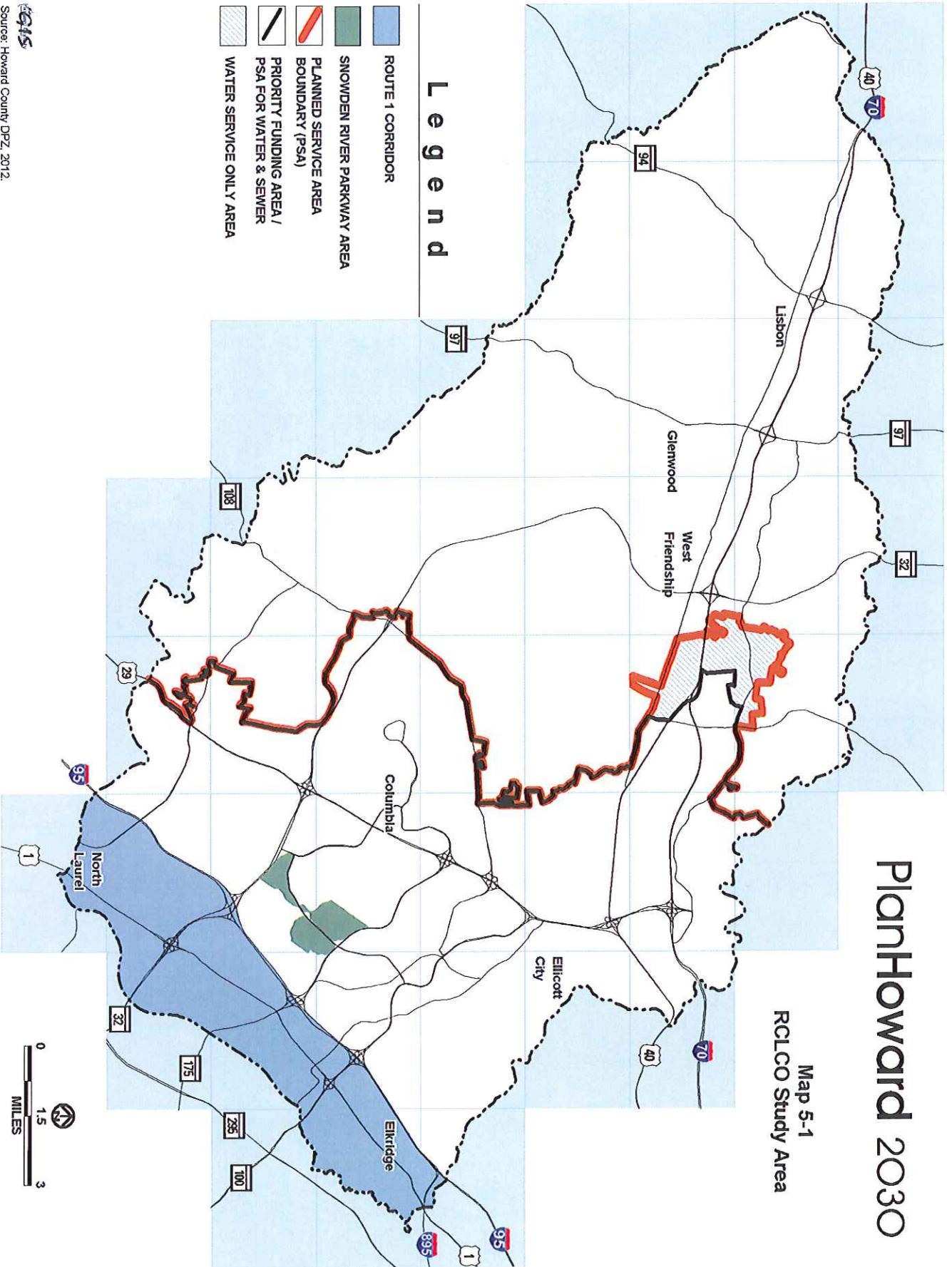
Map 4-1
Rural Land
Preservation



Source: Howard County DPZ, 2012.

PlanHoward 2030

Map 5-1
RCLCO Study Area



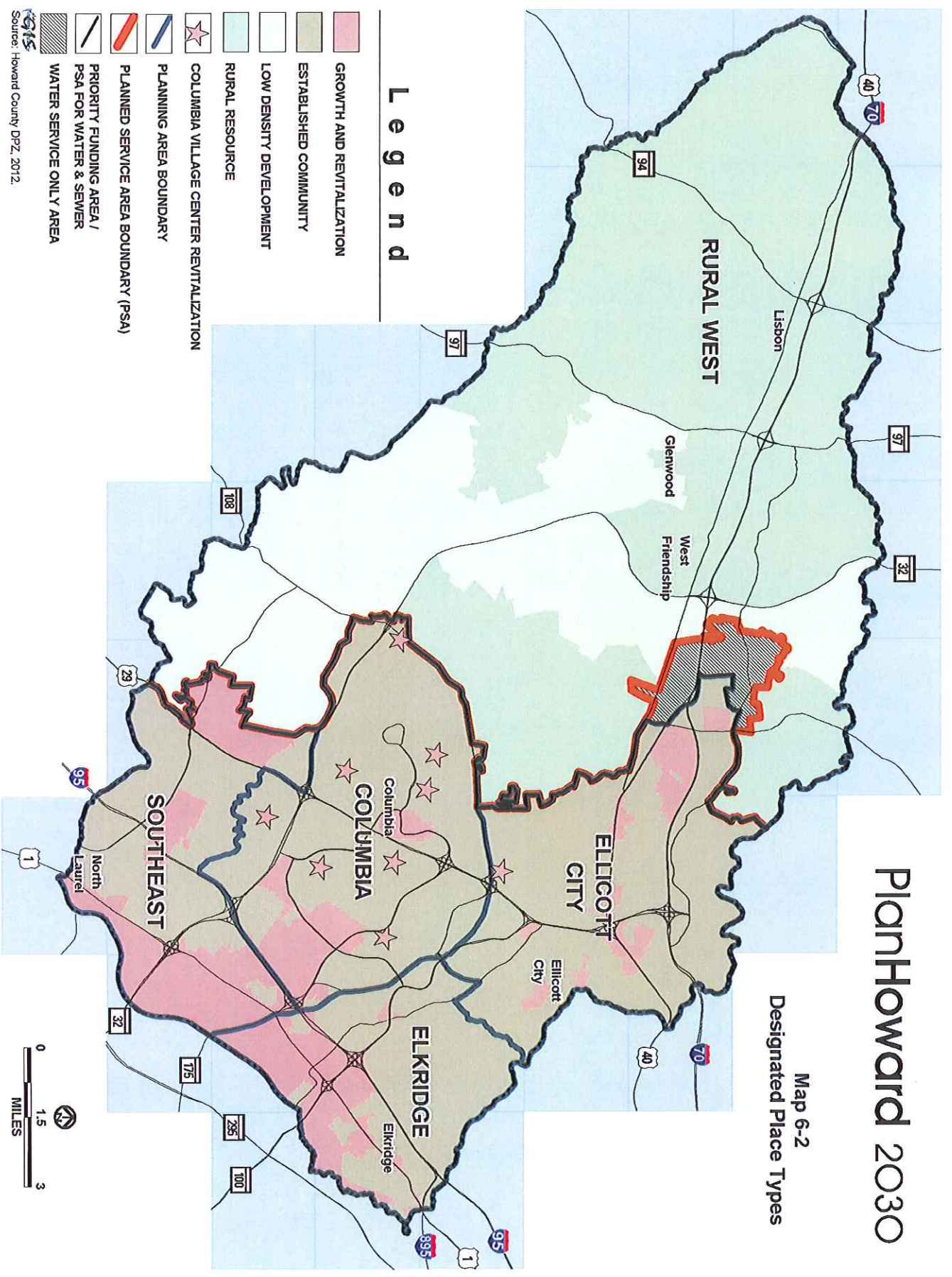
Legend

- ROUTE 1 CORRIDOR
- SNOWDEN RIVER PARKWAY AREA
- PLANNED SERVICE AREA
- BOUNDARY (PSA)
- PRIORITY FUNDING AREA / PSA FOR WATER & SEWER
- WATER SERVICE ONLY AREA



PlanHoward 2030

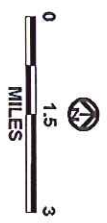
Map 6-2
Designated Place Types



Legend

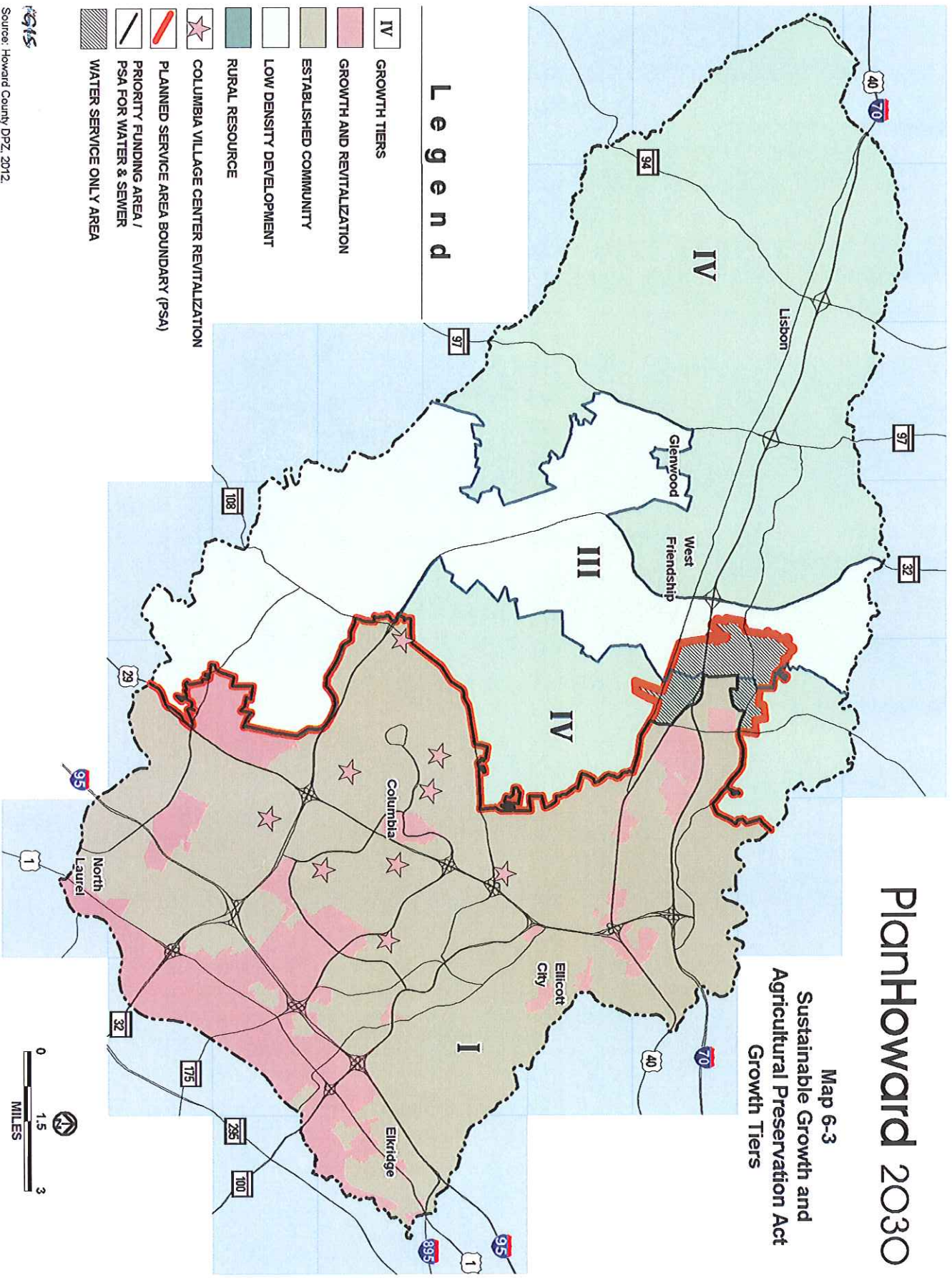
- GROWTH AND REVITALIZATION
- ESTABLISHED COMMUNITY
- LOW DENSITY DEVELOPMENT
- RURAL RESOURCE
- COLUMBIA VILLAGE CENTER REVITALIZATION
- PLANNING AREA BOUNDARY
- PLANNED SERVICE AREA BOUNDARY (PSA)
- PRIORITY FUNDING AREA / PSA FOR WATER & SEWER
- WATER SERVICE ONLY AREA

GIS Source: Howard County DPZ, 2012.



PlanHoward 2030

Map 6-3
Sustainable Growth and
Agricultural Preservation Act
Growth Tiers



Legend

- IV GROWTH TIERS
- GROWTH AND REVITALIZATION
- ESTABLISHED COMMUNITY
- LOW DENSITY DEVELOPMENT
- RURAL RESOURCE
- COLUMBIA VILLAGE CENTER REVITALIZATION
- PLANNED SERVICE AREA BOUNDARY (PSA)
- PRIORITY FUNDING AREA / PSA FOR WATER & SEWER
- WATER SERVICE ONLY AREA

PlanHoward 2030

Map 8-1
Land Preservation
and Open Space

