

Introduced Dec. 5, 2011
Public hearing Dec. 19, 2011
Council action March 5, 2012
Executive action * See below
Effective date _____

County Council of Howard County, Maryland

2011 Legislative Session

Legislative day # 13

BILL NO. 57 - 2011

Introduced by: The Chair
based on the recommendation of the Redistricting Commission

AN ACT repealing and reenacting Subtitle 3 "Councilmanic Districts" of Title 5 "County Council" of the Howard County Code to adopt redistricting maps and council district descriptions which will establish new council districts for Howard County in accordance with Howard County Charter Section 202(f) "Redistricting"; and generally relating to Redistricting.

Introduced and read first time December 5, 2011. Ordered posted and hearing scheduled.

By order Stephen M LeGendre
Stephen LeGendre, Administrator to the County Council

Having been posted & notice of time & place of hearing and title of Bill having been published according to Charter, the Bill was read for a second time at a public hearing on December 19, 2011 and concluded on _____, 2012.

Tabled Jan. 3, 2012.
Extended for 30 days Feb. 6, 2012

By order Stephen M LeGendre
Stephen LeGendre, Administrator to the County Council

This Bill was read the third time March 5, 2012 and Passed , Passed with amendments , Failed .

By order Stephen M LeGendre
Stephen LeGendre, Administrator to the County Council

Sealed with the County Seal and presented to the County Executive for approval this 6th day of March, 2012 at 2:00 p.m.

* Returned un signed March 19, 2012.
See letter dated March 15, 2012
(copy attached).
Stephen M LeGendre

By order Stephen M LeGendre
Stephen LeGendre, Administrator to the County Council

Approved/vetoed by the County Executive on _____, 2012.

Ken Ulman, County Executive

NOTE: [[text in brackets]] indicates deletions from existing law; TEXT IN ALL CAPITALS indicates additions to existing law.
~~Strikeout~~ indicates material deleted by amendment; Underlining indicates material added by amendment.



HOWARD COUNTY OFFICE OF COUNTY EXECUTIVE

3430 Courthouse Drive ■ Ellicott City, Maryland 21043 ■ 410-313-2013

Ken Ulman,
Howard County Executive
kulman@howardcountymd.gov

www.howardcountymd.gov
FAX 410-313-3051
TDD 410-313-2323

March 15, 2012

The Honorable Mary Kay Sigaty
Chairperson, Howard County Council
3430 Courthouse Drive
Ellicott City, Maryland 21043

Dear Chairperson Sigaty:

In accordance with Section 209(g) of the Howard County Charter, I intend to return County Council Bill 57-2011 unsigned on Monday, March 19, 2012.

After much consideration, I have determined that the Bill, amended and adopted by a narrow margin, does not improve upon the map produced and recommended last year by the Councilmanic Redistricting Commission. While members of the County Council made strong arguments for several different district boundary alignments, the map presented by the bi-partisan Commission, vetted through three public hearings and five work sessions, is better for Howard County as a whole.

Although there was some opposition to the Councilmanic Redistricting Commission's map, the public was significantly engaged in the process, and I believe the Commission's map ensures that councilmanic district boundaries are fair and equitable for all of Howard County.

I want to thank you and the other members of the County Council for your work on this legislation. I appreciate the efforts you have made throughout this important dialogue.

Sincerely,

Ken Ulman
Howard County Executive

cc: The Honorable Courtney Watson, Vice-Chair
The Honorable Dr. Calvin Ball, Member
The Honorable Greg Fox, Member
The Honorable Jen Terrasa, Member
Steve LeGendre, Council Administrator

1 **WHEREAS**, Section 202(f) of the Howard County Charter requires that the County
2 Council appoint a Councilmanic Redistricting Commission by April 1st of the year after each
3 decennial census date; and

4
5 **WHEREAS**, the most recent decennial census was completed in April 2010, and the
6 Redistricting Commission used adjusted 2010 Census population data for Howard County
7 from the Maryland Department of Planning, which is the designated State agency coordinator
8 for the Census Redistricting Data Program with the United States Bureau of the Census; and

9
10 **WHEREAS**, the 2011 Redistricting Commission was comprised of the following Council
11 appointed members: Larry Walker, Chair, Joan Becker, Irfan Malik, David A. Marker, Cheryl
12 M. Miller, David Myers, and Kevin Rodkey; and

13
14 **WHEREAS**, the Redistricting Commission was charged with the responsibility of
15 presenting a councilmanic redistricting plan to the County Council by October 15th; and

16
17 **WHEREAS**, the Charter provides that the districts shall be compact, contiguous,
18 substantially equal in population, and have common interest as a result of geography,
19 occupation, history, or existing political boundaries; and

20
21 **WHEREAS**, in a seven month period of time, the Commission met a total of five times
22 (April 11th, June 20th, September 8th, September 26th, and October 5th), held three public
23 hearings (May 24th, June 13th, and September 21st), heard testimony from many citizens, and
24 deliberated over many different proposals; and

25
26 **WHEREAS**, on October 5, 2011, the Redistricting Commission approved the 2011
27 Howard County Redistricting Commission Redistricting Plan and presented the Plan to the
28 County Council on October 14, 2011; and

29
30 **WHEREAS**, as required by the Howard County Charter, the County Council held a public
31 hearing on the Redistricting Commission's Plan on November 7, 2011 to gather additional
32 input from the public; and

1
2
3
4
5
6
7
8
9
10
11
12
13
14
15
16
17
18
19
20
21
22
23
24
25
26
27
28
29
30
31
32
33

WHEREAS, the County Council has until March 15, 2012 to enact by ordinance a plan establishing Councilmanic Districts or the attached plan submitted by the Redistricting Commission becomes law.

NOW, THEREFORE:

Section 1. Be It Enacted by the County Council of Howard County, Maryland, that the Howard County Code is amended as follows:

By repealing:

- Title 5. County Council.*
- Subtitle 3. Councilmanic Districts.*
- Section 5.300. Establishment.*
- Section 5.301. New districts.*

By adding to:

- Title 5. County Council.*
- Subtitle 3. Councilmanic Districts.*
- Section 5.300*

Sec. 5.300. - ESTABLISHED.

PURSUANT TO SUBSECTION 202(F) OF THE HOWARD COUNTY CHARTER, WHICH PROVIDES FOR ESTABLISHING BOUNDARIES FOR COUNCILMANIC DISTRICTS AFTER EACH DECENNIAL CENSUS, THE BOUNDARIES FOR THE COUNCILMANIC DISTRICTS FOR HOWARD COUNTY, WERE ESTABLISHED BY COUNCIL BILL NO. 57-2011, AND ARE EFFECTIVE UNTIL ANOTHER REDISTRICTING PLAN BECOMES EFFECTIVE.

Section 2. And Be It Further Enacted by the County Council of Howard County, Maryland that the Council District Boundary Descriptions and the 2011 Redistricting Commission's Final Redistricting Plan maps prepared by the Department of Planning and Zoning and the Department of Technology and Communications, Geographic Information Systems, attached hereto, are adopted as the Councilmanic Districts in accordance with Section 202(f) of the

1 *Howard County Charter, and that for purposes of elections, the provisions of this Act shall be*
2 *applicable to elections for members of the County Council beginning with the primary and*
3 *general elections of 2014 and, for purposes of representation, shall be applicable beginning*
4 *with the first Monday of December 2014.*

5

6 ***Section 3. And Be It Further Enacted*** *by the County Council of Howard County, Maryland*
7 *that if there is conflicting boundary information in the Council District Boundary*
8 *Descriptions and the 2011 Redistricting Commission's Final Redistricting Plan maps adopted*
9 *by this Act, the boundary information in the 2011 Redistricting Commission's Final*
10 *Redistricting Plan maps shall prevail.*

11

12 ***Section 4. And Be It Further Enacted*** *by the County Council of Howard County, Maryland, that*
13 *this Act shall become effective 61 days after enactment.*

14

15

16

17

18

Councilmanic District Descriptions
for Howard County, Maryland

COUNCIL DISTRICT 1

The following entire Census Tracts are located in District 1:

24027601201	24027602304	24027602700	24027602900
24027602303	24027602600	24027602800	

The following entire Census Block Groups are located in District 1:






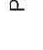


240276011041	240276021005	240276023022	240276023061
240276011043			

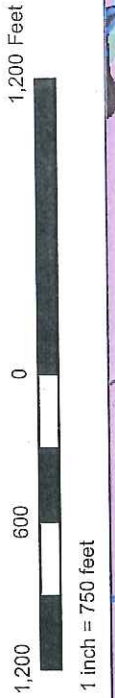
The following entire Census Blocks are located in District 1:

240276011042000	240276012041023	240276012042049	240276023023018
240276011042001	240276012041024	240276012042050	240276023051000
240276011042002	240276012041025	240276012042051	240276023051001
240276011042003	240276012041026	240276012042057	240276023051002
240276011042004	240276012041027	240276012042058	240276023051003
240276011042005	240276012041028	240276021004012	240276023051004
240276011042006	240276012041029	240276021004019	240276023051005
240276011042007	240276012041030	240276022022000	240276023052000
240276011042008	240276012041031	240276022022006	240276023052001
240276011042009	240276012041032	240276022022008	240276023052002
240276011042010	240276012041033	240276022022048	240276023052003
240276011042011	240276012041034	240276023021000	240276023052004
240276011042012	240276012041035	240276023021001	240276023052005
240276011042013	240276012041040	240276023021002	240276023052006
240276011042014	240276012041041	240276023021003	240276023052007
240276011042015	240276012042000	240276023021004	240276023052008
240276011042016	240276012042001	240276023021005	240276023052009
240276011042017	240276012042002	240276023021006	240276023052012
240276011042018	240276012042003	240276023021007	240276023052013
240276011042019	240276012042004	240276023021008	240276023062000
240276011042020	240276012042005	240276023021009	240276023062001
240276011042021	240276012042006	240276023021017	240276023062002
240276011042022	240276012042007	240276023021018	240276023062003
240276011042023	240276012042008	240276023021019	240276023062004
240276011042024	240276012042009	240276023021020	240276023062005
240276011042025	240276012042010	240276023021021	240276023062006
240276011042026	240276012042011	240276023021022	240276023062007
240276011042027	240276012042012	240276023021023	240276023062008
240276011042028	240276012042013	240276023021024	240276023062009
240276011042029	240276012042014	240276023021025	240276023062010
240276011042030	240276012042015	240276023021026	240276023062011
240276011042031	240276012042016	240276023021027	240276023062012
240276011042032	240276012042017	240276023021029	240276023062017
240276011042036	240276012042021	240276023021030	240276023062018
240276011042037	240276012042023	240276023021031	240276023062019
240276011042043	240276012042027	240276023021032	240276023062020
240276012041005	240276012042030	240276023021033	240276023062021
240276012041006	240276012042031	240276023021034	240276030042046
240276012041016	240276012042032	240276023021035	240276030042047
240276012041017	240276012042033	240276023021036	240276030042048
240276012041018	240276012042034	240276023021037	240276030042051
240276012041019	240276012042035	240276023021038	240276030042053
240276012041020	240276012042036	240276023021039	240276030042055
240276012041021	240276012042037	240276023021040	240276030042057
240276012041022	240276012042038	240276023023017	240276030042076

240276030042077	240276030043011	240276030043038	240276030043045
240276030043000	240276030043012	240276030043039	240276030043046
240276030043001	240276030043013	240276030043040	240276030043047
240276030043002	240276030043024	240276030043041	240276030043048
240276030043003	240276030043035	240276030043042	240276030043049
240276030043004	240276030043036	240276030043043	240276030043050
240276030043010	240276030043037	240276030043044	240276030043051

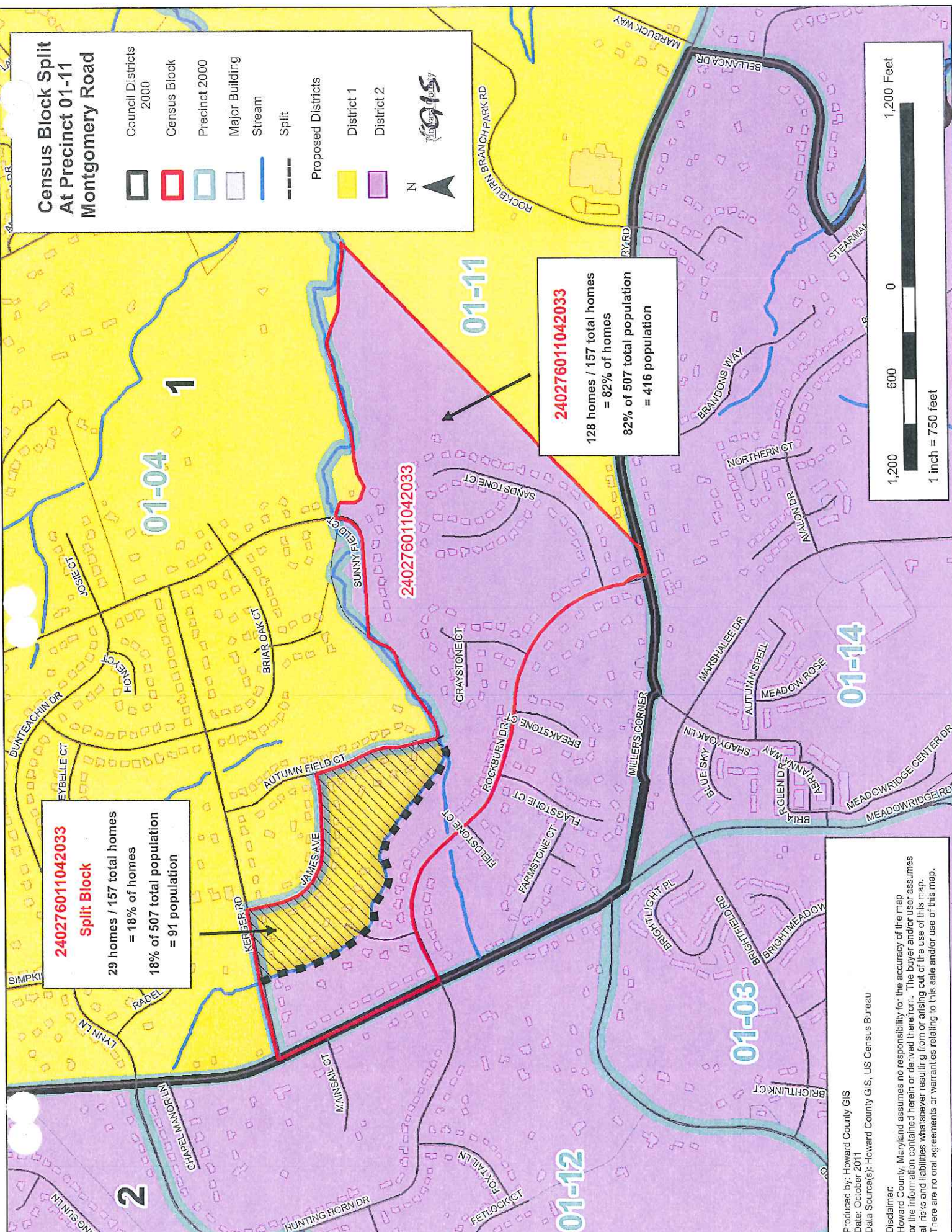
Census Block Split At Precinct 01-11 Montgomery Road

-  Council Districts 2000
-  Census Block
-  Precinct 2000
-  Major Building
-  Stream
-  Split
- Proposed Districts**
-  District 1
-  District 2



240276011042033
Split Block
 29 homes / 157 total homes
 = 18% of homes
 18% of 507 total population
 = 91 population

240276011042033
 128 homes / 157 total homes
 = 82% of homes
 82% of 507 total population
 = 416 population

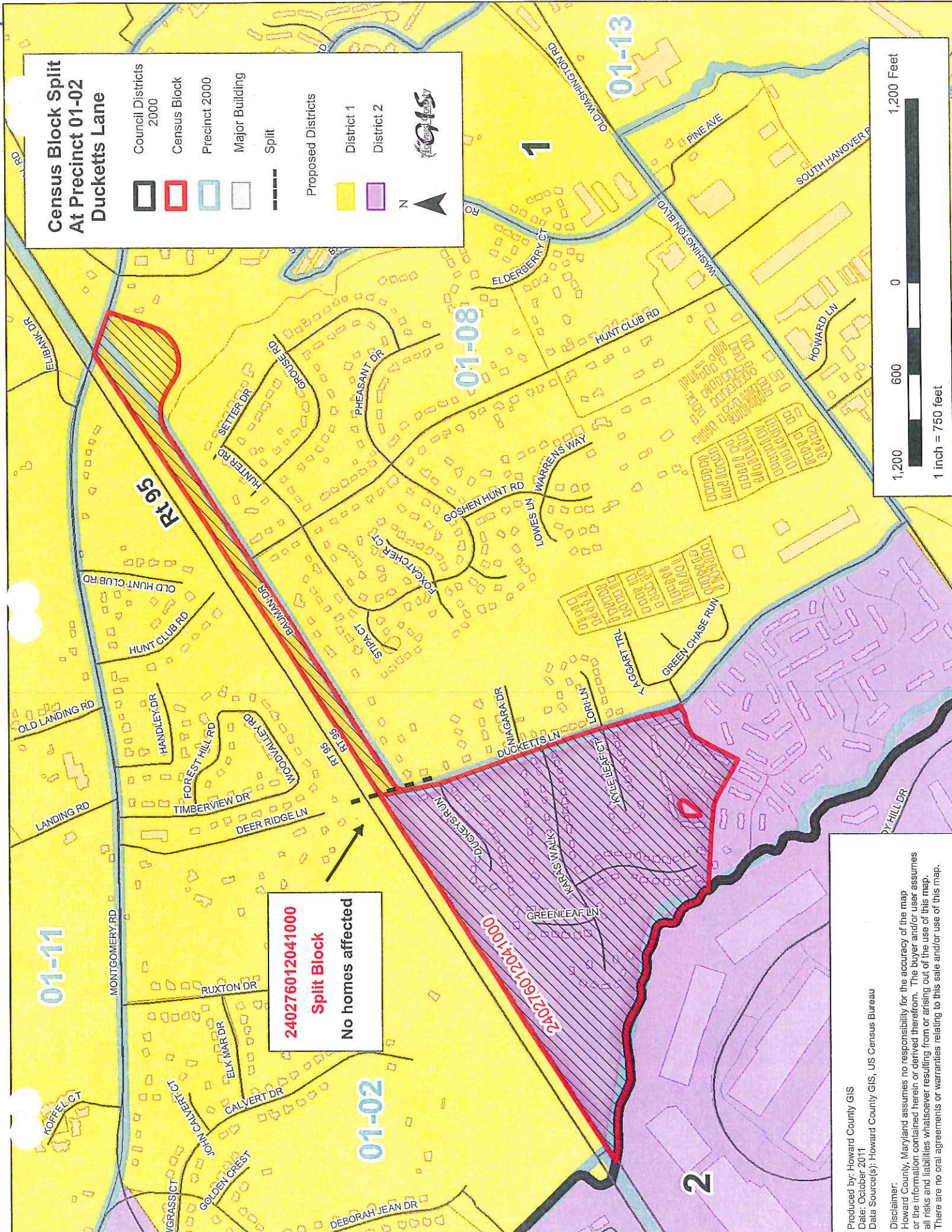
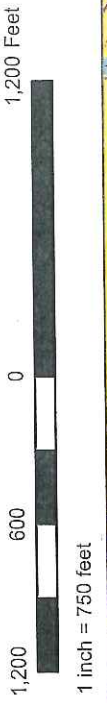


Produced by: Howard County GIS
 Date: October 2011
 Data Source(s): Howard County GIS, US Census Bureau

Disclaimer:
 Howard County, Maryland assumes no responsibility for the accuracy of the map or the information contained herein or derived therefrom. The buyer and/or user assumes all risks and liabilities whatsoever resulting from or arising out of the use of this map. There are no oral agreements or warranties relating to this sale and/or use of this map.

Census Block Split At Precinct 01-02 Ducketts Lane

- Council Districts 2000
- Census Block
- Precinct 2000
- Major Building
- Split
- Proposed Districts
- District 1
- District 2



240276012041000
Split Block
No homes affected

Produced by: Howard County GIS
 Date: October, 2011
 Data Source(s): Howard County GIS, US Census Bureau

Disclaimer:
 Howard County, Maryland assumes no responsibility for the accuracy of the map or the information contained herein or derived therefrom. The buyer and/or user assumes all risks and liabilities whatsoever resulting from or arising out of the use of this map. There are no oral agreements or warranties relating to this sale and/or use of this map.

COUNCIL DISTRICT 2

The following entire Census Tracts are located in District 2:

24027601103	24027601108	24027606601	24027606607
24027601105	24027601203	24027606606	24027606706
24027601107			

The following entire Census Block Groups are located in District 2:

240276066031	240276066032	240276066033	240276066041
--------------	--------------	--------------	--------------

The following entire Census Blocks are located in District 2:

240276011042033	240276012042048	240276023023034	240276066034003
240276011042034	240276012042052	240276023023035	240276066034004
240276011042035	240276012042053	240276023023036	240276066034005
240276011042038	240276012042054	240276023023037	240276066034006
240276011042039	240276012042055	240276023023038	240276066035000
240276011042040	240276012042056	240276023023039	240276066035001
240276011042041	240276012042059	240276023023040	240276066035002
240276011042042	240276012042060	240276023023041	240276066035006
240276011042044	240276023021010	240276023023042	240276066035007
240276012041000	240276023021011	240276023023043	240276066035008
240276012041001	240276023021012	240276023023044	240276066035009
240276012041002	240276023021013	240276023023045	240276066035010
240276012041003	240276023021014	240276023023046	240276066035015
240276012041004	240276023021015	240276023023047	240276066035016
240276012041007	240276023021028	240276023023048	240276066035017
240276012041008	240276023023000	240276023023049	240276066042000
240276012041009	240276023023001	240276023023051	240276066042001
240276012041010	240276023023004	240276023023052	240276066042002
240276012041011	240276023023005	240276023023053	240276066042003
240276012041012	240276023023006	240276023023054	240276066042004
240276012041013	240276023023007	240276023023055	240276066042005
240276012041014	240276023023008	240276023023056	240276066042006
240276012041015	240276023023009	240276023023057	240276066042007
240276012041036	240276023023010	240276023023058	240276066042008
240276012041037	240276023023011	240276023023059	240276066042009
240276012041038	240276023023012	240276023023060	240276066042010
240276012041039	240276023023013	240276023023061	240276066042011
240276012042018	240276023023014	240276023023062	240276066042012
240276012042019	240276023023015	240276023023063	240276066042016
240276012042020	240276023023016	240276023023064	240276066042017
240276012042022	240276023023019	240276023023065	240276066042018
240276012042024	240276023023020	240276023023066	240276066042019
240276012042025	240276023023021	240276023023067	240276066042020
240276012042026	240276023023022	240276023023068	240276066042022
240276012042028	240276023023023	240276023023069	240276066042023
240276012042029	240276023023024	240276023023070	240276067041000
240276012042039	240276023023025	240276023023071	240276067041001
240276012042040	240276023023026	240276023023072	240276067041002
240276012042041	240276023023027	240276023023073	240276067041003
240276012042042	240276023023028	240276023023074	240276067041004
240276012042043	240276023023029	240276023023075	240276067041006
240276012042044	240276023023030	240276023023076	240276067041016
240276012042045	240276023023031	240276066034000	240276067041033
240276012042046	240276023023032	240276066034001	240276067041034
240276012042047	240276023023033	240276066034002	240276067071000

COUNCIL DISTRICT 3

The following entire Census Tracts are located in District 3:

24027606701	24027606803	24027606904	24027606906
24027606705	24027606804	24027606905	24027606907

The following entire Census Block Groups are located in District 3:

240276067042	240276067072	240276069011	240276069014
240276067043	240276068062	240276069013	

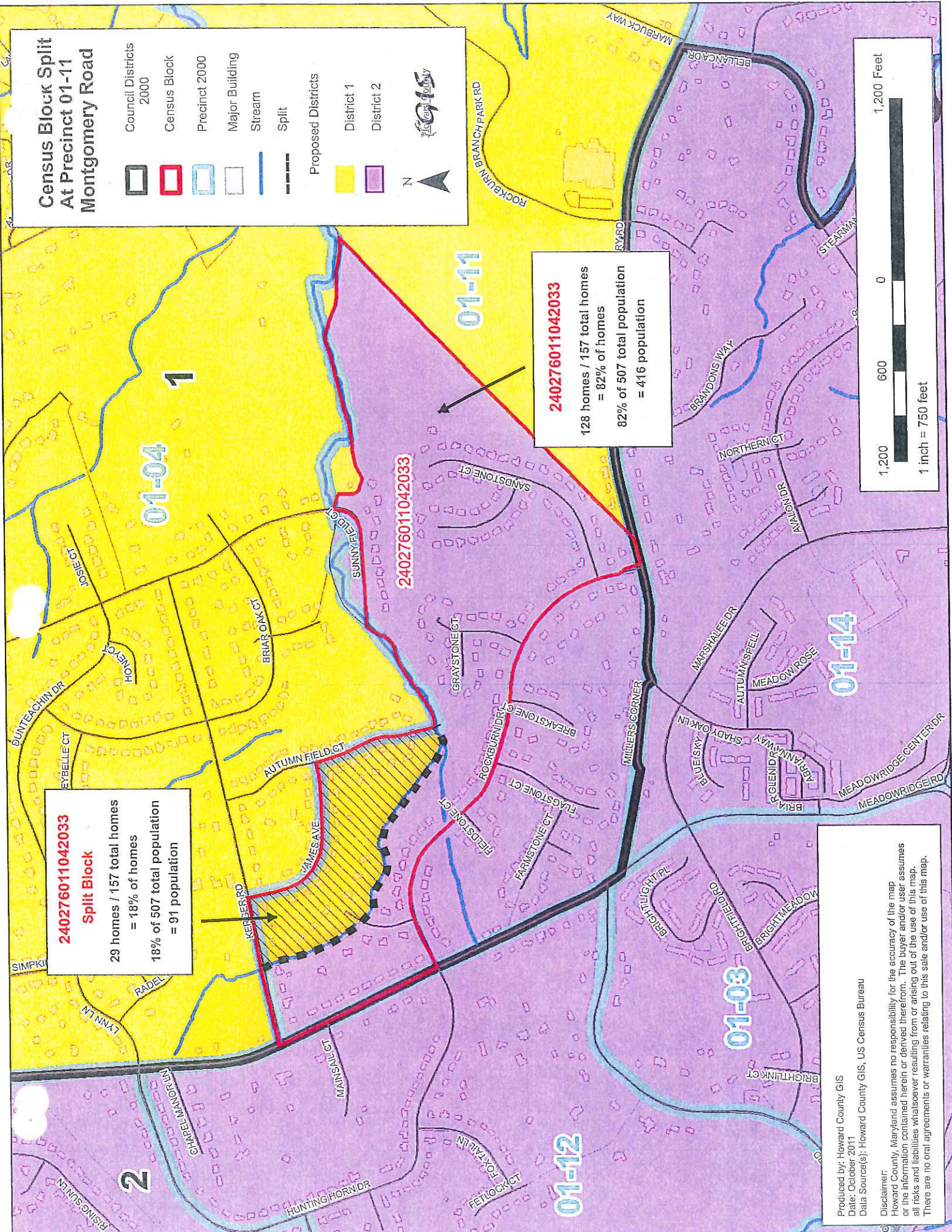
Census Block Split At Precinct 01-11 Montgomery Road

Council Districts 2000

- Census Block
- Precinct 2000
- Major Building
- Stream
- Split

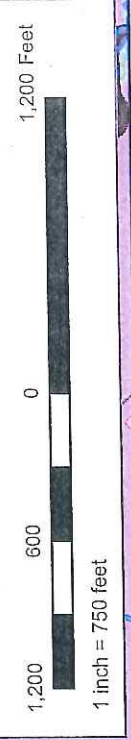
Proposed Districts

- District 1
- District 2



240276011042033
Split Block
29 homes / 157 total homes
= 18% of homes
18% of 507 total population
= 91 population

240276011042033
128 homes / 157 total homes
= 82% of homes
82% of 507 total population
= 416 population

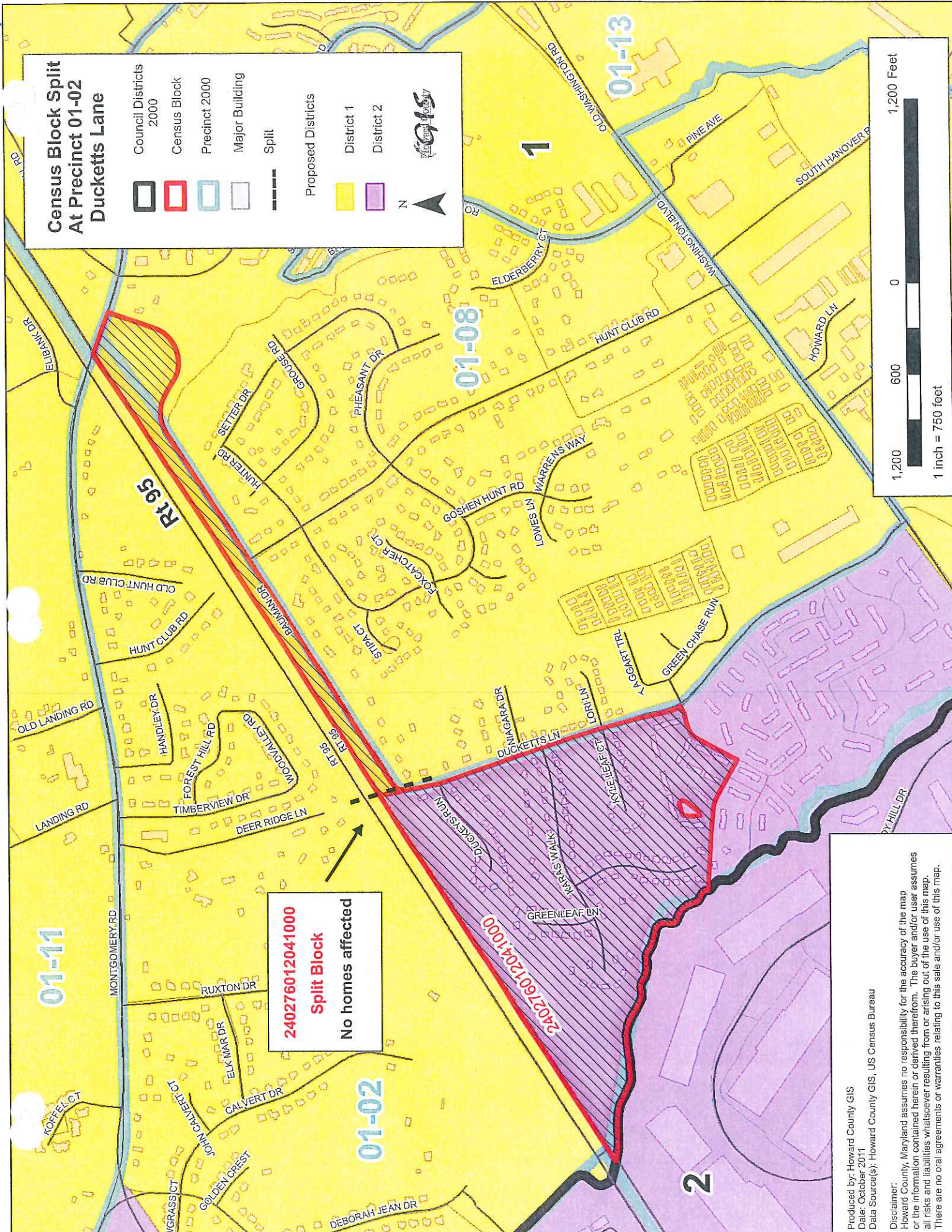
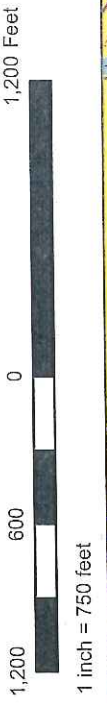


Produced by: Howard County GIS
Date: October 2011
Data Source(s): Howard County GIS, US Census Bureau

Disclaimer:
Howard County, Maryland assumes no responsibility for the accuracy of the map or the information contained herein or derived therefrom. The buyer and/or user assumes all risks and liabilities whatsoever resulting from or arising out of the use of this map. There are no oral agreements or warranties relating to this sale and/or use of this map.

Census Block Split At Precinct 01-02 Ducketts Lane

- Council Districts 2000
- Census Block
- Precinct 2000
- Major Building
- Split
- Proposed Districts
- District 1
- District 2



240276012041000
Split Block
No homes affected

Produced by: Howard County GIS
 Date: October, 2011
 Data Source(s): Howard County GIS, US Census Bureau

Disclaimer:
 Howard County, Maryland assumes no responsibility for the accuracy of the map or the information contained herein or derived therefrom. The buyer and/or user assumes all risks and liabilities whatsoever resulting from or arising out of the use of this map. There are no oral agreements or warranties relating to this sale and/or use of this map.

The following entire Census Blocks are located in District 3:

240276066034007	240276067071132	240276068061022	240276069012012
240276066034008	240276067071134	240276068061023	240276069012013
240276066035003	240276067071135	240276068061024	240276069012014
240276066035004	240276067071136	240276068061025	240276069012016
240276066035005	240276067071137	240276068061026	240276069012017
240276066035011	240276067071138	240276068061027	240276069012018
240276066035012	240276067071139	240276068061028	240276069012019
240276066035013	240276067071141	240276068061029	240276069012020
240276066035014	240276067071142	240276068061030	240276069012021
240276066035018	240276067071143	240276068061031	240276069012022
240276066042013	240276067071144	240276068061032	240276069012023
240276066042014	240276067071145	240276068061033	240276069012024
240276066042015	240276067071146	240276068061034	240276069012025
240276066042021	240276067071147	240276068061035	240276069012026
240276067041005	240276067071148	240276068061036	240276069012027
240276067041007	240276067071149	240276068061037	240276069012028
240276067041008	240276067071150	240276068061038	240276069012029
240276067041009	240276067071151	240276068061039	240276069012030
240276067041010	240276067071152	240276068061040	240276069012031
240276067041011	240276067071153	240276068061041	240276069012032
240276067041012	240276067071154	240276068061042	240276069012033
240276067041013	240276067071155	240276068061043	240276069012034
240276067041014	240276067071156	240276068061044	240276069012035
240276067041015	240276068061000	240276068061045	240276069012036
240276067041017	240276068061001	240276068061046	240276069012037
240276067041018	240276068061002	240276068061047	240276069012038
240276067041019	240276068061003	240276068061048	240276069012039
240276067041020	240276068061004	240276068061049	240276069012040
240276067041021	240276068061005	240276068061050	240276069012041
240276067041022	240276068061006	240276068061051	240276069012042
240276067041023	240276068061007	240276068061053	240276069012043
240276067041024	240276068061008	240276068061054	240276069012044
240276067041025	240276068061009	240276068061055	240276069012045
240276067041026	240276068061010	240276068061056	240276069012046
240276067041027	240276068061011	240276068061058	240276069012047
240276067041028	240276068061012	240276069012001	240276069012048
240276067041029	240276068061013	240276069012002	240276069012049
240276067041030	240276068061014	240276069012004	240276069012050
240276067041031	240276068061015	240276069012005	240276069012051
240276067041032	240276068061016	240276069012006	240276069012052
240276067041035	240276068061017	240276069012007	240276069012053
240276067041036	240276068061018	240276069012008	240276069012054
240276067041037	240276068061019	240276069012009	240276069012055
240276067071047	240276068061020	240276069012010	240276069012056
240276067071131	240276068061021	240276069012011	240276069012057

240276069012058	240276069012069	240276069012079	240276069012089
240276069012059	240276069012070	240276069012080	240276069012090
240276069012060	240276069012071	240276069012081	240276069012091
240276069012061	240276069012072	240276069012082	240276069012092
240276069012062	240276069012073	240276069012083	240276069012093
240276069012063	240276069012074	240276069012084	240276069012094
240276069012064	240276069012075	240276069012085	240276069012095
240276069012065	240276069012076	240276069012086	240276069012096
240276069012066	240276069012077	240276069012087	240276069012097
240276069012067	240276069012078	240276069012088	240276069012098
240276069012068			

COUNCIL DISTRICT 4

The following entire Census Tracts are located in District 4:

24027605401	24027605502	24027605504	24027605601
24027605402	24027605503	24027605505	24027605602

The following entire Census Block Groups are located in District 4:

240276051021	240276051022		
--------------	--------------	--	--

The following entire Census Blocks are located in District 4:

240276023021016	240276023052027	240276023062049	240276051023027
240276023023002	240276023052028	240276023062050	240276051023028
240276023023003	240276023052029	240276023062051	240276051023029
240276023023050	240276023052030	240276023062052	240276051023030
240276023051006	240276023052031	240276023062053	240276051023031
240276023051007	240276023052032	240276023062054	240276051023032
240276023051008	240276023052033	240276023062055	240276051023033
240276023051009	240276023052034	240276023062056	240276051023034
240276023051010	240276023062013	240276023062057	240276051023035
240276023051011	240276023062014	240276023062058	240276051023036
240276023051012	240276023062015	240276023062059	240276051023037
240276023051013	240276023062016	240276023062060	240276051023038
240276023051014	240276023062022	240276051023000	240276051023039
240276023051015	240276023062023	240276051023001	240276051023043
240276023051016	240276023062024	240276051023002	240276051023044
240276023051017	240276023062025	240276051023003	240276051023045
240276023051018	240276023062026	240276051023004	240276051023046
240276023051019	240276023062027	240276051023005	240276051023047
240276023051020	240276023062028	240276051023006	240276051023048
240276023051021	240276023062029	240276051023007	240276051023049
240276023051022	240276023062030	240276051023008	240276051023050
240276023051023	240276023062031	240276051023009	240276051023052
240276023051024	240276023062032	240276051023010	240276051023061
240276023051025	240276023062033	240276051023011	240276051023062
240276023052010	240276023062034	240276051023012	240276051042054
240276023052011	240276023062035	240276051023013	240276051042055
240276023052014	240276023062036	240276051023014	240276051042056
240276023052015	240276023062037	240276051023015	240276051042057
240276023052016	240276023062038	240276051023016	240276051042058
240276023052017	240276023062039	240276051023017	240276051042059
240276023052018	240276023062040	240276051023018	240276051042061
240276023052019	240276023062041	240276051023019	240276051042062
240276023052020	240276023062042	240276051023020	240276051042063
240276023052021	240276023062043	240276051023021	240276051042064
240276023052022	240276023062044	240276051023022	240276051042065
240276023052023	240276023062045	240276051023023	240276051042066
240276023052024	240276023062046	240276051023024	240276051042067
240276023052025	240276023062047	240276051023025	240276051042068
240276023052026	240276023062048	240276051023026	

COUNCIL DISTRICT 5

The following entire Census Tracts are located in District 5:

24027602201	24027603003	24027604002	24027606805
24027603001	24027604001	24027605103	

The following entire Census Block Groups are located in District 5:

240276021001	240276021006	240276030041	240276051041
240276021002	240276022021	240276051024	240276068063
240276021003	240276022023		

The following entire Census Blocks are located in District 5:

240276021004000	240276022022027	240276030042024	240276030042078
240276021004001	240276022022028	240276030042025	240276030042079
240276021004002	240276022022029	240276030042026	240276030042080
240276021004003	240276022022030	240276030042027	240276030042081
240276021004004	240276022022031	240276030042028	240276030043005
240276021004005	240276022022032	240276030042029	240276030043006
240276021004006	240276022022033	240276030042030	240276030043007
240276021004007	240276022022034	240276030042031	240276030043008
240276021004008	240276022022035	240276030042032	240276030043009
240276021004009	240276022022036	240276030042033	240276030043014
240276021004010	240276022022037	240276030042034	240276030043015
240276021004011	240276022022038	240276030042035	240276030043016
240276021004013	240276022022039	240276030042036	240276030043017
240276021004014	240276022022040	240276030042037	240276030043018
240276021004015	240276022022041	240276030042038	240276030043019
240276021004016	240276022022042	240276030042039	240276030043020
240276021004017	240276022022043	240276030042040	240276030043021
240276021004018	240276022022044	240276030042041	240276030043022
240276021004020	240276022022045	240276030042042	240276030043023
240276021004021	240276022022046	240276030042043	240276030043025
240276021004022	240276022022047	240276030042044	240276030043026
240276022022001	240276030042000	240276030042045	240276030043027
240276022022002	240276030042001	240276030042049	240276030043028
240276022022003	240276030042002	240276030042050	240276030043029
240276022022004	240276030042003	240276030042052	240276030043030
240276022022005	240276030042004	240276030042054	240276030043031
240276022022007	240276030042005	240276030042056	240276030043032
240276022022009	240276030042006	240276030042058	240276030043033
240276022022010	240276030042007	240276030042059	240276030043034
240276022022011	240276030042008	240276030042060	240276051023040
240276022022012	240276030042009	240276030042061	240276051023041
240276022022013	240276030042010	240276030042062	240276051023042
240276022022014	240276030042011	240276030042063	240276051023051
240276022022015	240276030042012	240276030042064	240276051023053
240276022022016	240276030042013	240276030042065	240276051023054
240276022022017	240276030042014	240276030042066	240276051023055
240276022022018	240276030042015	240276030042067	240276051023056
240276022022019	240276030042016	240276030042068	240276051023057
240276022022020	240276030042017	240276030042069	240276051023058
240276022022021	240276030042018	240276030042070	240276051023059
240276022022022	240276030042019	240276030042071	240276051023060
240276022022023	240276030042020	240276030042072	240276051023063
240276022022024	240276030042021	240276030042073	240276051023064
240276022022025	240276030042022	240276030042074	240276051023065
240276022022026	240276030042023	240276030042075	240276051023066

240276051023067	240276051042015	240276051042031	240276051042046
240276051042000	240276051042016	240276051042032	240276051042047
240276051042001	240276051042017	240276051042033	240276051042048
240276051042002	240276051042018	240276051042034	240276051042049
240276051042003	240276051042019	240276051042035	240276051042050
240276051042004	240276051042020	240276051042036	240276051042051
240276051042005	240276051042021	240276051042037	240276051042052
240276051042006	240276051042022	240276051042038	240276051042053
240276051042007	240276051042023	240276051042039	240276051042060
240276051042008	240276051042024	240276051042040	240276051042069
240276051042009	240276051042025	240276051042041	240276051042070
240276051042010	240276051042026	240276051042042	240276051042071
240276051042011	240276051042027	240276051042043	240276051042072
240276051042012	240276051042028	240276051042044	240276068061052
240276051042013	240276051042029	240276051042045	240276068061057
240276051042014	240276051042030		

Councilmanic Redistricting Maps

for

Howard County, Maryland

(2010 Census)

RECOMMENDED COUNCIL DISTRICTS 2010

DISTRICT 1

Legend

Census Tract

- 24027602900
- 24027602901
- 24027602902
- 24027602903
- 24027602904
- 24027602905
- 24027602906
- 24027602907
- 24027602908
- 24027602909
- 24027602910
- 24027602911
- 24027602912
- 24027602913
- 24027602914
- 24027602915
- 24027602916
- 24027602917
- 24027602918
- 24027602919
- 24027602920
- 24027602921
- 24027602922
- 24027602923
- 24027602924
- 24027602925
- 24027602926
- 24027602927
- 24027602928
- 24027602929
- 24027602930
- 24027602931
- 24027602932
- 24027602933
- 24027602934
- 24027602935
- 24027602936
- 24027602937
- 24027602938
- 24027602939
- 24027602940
- 24027602941
- 24027602942
- 24027602943
- 24027602944
- 24027602945
- 24027602946
- 24027602947
- 24027602948
- 24027602949
- 24027602950
- 24027602951
- 24027602952
- 24027602953
- 24027602954
- 24027602955
- 24027602956
- 24027602957
- 24027602958
- 24027602959
- 24027602960
- 24027602961
- 24027602962
- 24027602963
- 24027602964
- 24027602965
- 24027602966
- 24027602967
- 24027602968
- 24027602969
- 24027602970
- 24027602971
- 24027602972
- 24027602973
- 24027602974
- 24027602975
- 24027602976
- 24027602977
- 24027602978
- 24027602979
- 24027602980
- 24027602981
- 24027602982
- 24027602983
- 24027602984
- 24027602985
- 24027602986
- 24027602987
- 24027602988
- 24027602989
- 24027602990
- 24027602991
- 24027602992
- 24027602993
- 24027602994
- 24027602995
- 24027602996
- 24027602997
- 24027602998
- 24027602999
- 24027603000

Census Block Group

- 24027602900
- 24027602901
- 24027602902
- 24027602903
- 24027602904
- 24027602905
- 24027602906
- 24027602907
- 24027602908
- 24027602909
- 24027602910
- 24027602911
- 24027602912
- 24027602913
- 24027602914
- 24027602915
- 24027602916
- 24027602917
- 24027602918
- 24027602919
- 24027602920
- 24027602921
- 24027602922
- 24027602923
- 24027602924
- 24027602925
- 24027602926
- 24027602927
- 24027602928
- 24027602929
- 24027602930
- 24027602931
- 24027602932
- 24027602933
- 24027602934
- 24027602935
- 24027602936
- 24027602937
- 24027602938
- 24027602939
- 24027602940
- 24027602941
- 24027602942
- 24027602943
- 24027602944
- 24027602945
- 24027602946
- 24027602947
- 24027602948
- 24027602949
- 24027602950
- 24027602951
- 24027602952
- 24027602953
- 24027602954
- 24027602955
- 24027602956
- 24027602957
- 24027602958
- 24027602959
- 24027602960
- 24027602961
- 24027602962
- 24027602963
- 24027602964
- 24027602965
- 24027602966
- 24027602967
- 24027602968
- 24027602969
- 24027602970
- 24027602971
- 24027602972
- 24027602973
- 24027602974
- 24027602975
- 24027602976
- 24027602977
- 24027602978
- 24027602979
- 24027602980
- 24027602981
- 24027602982
- 24027602983
- 24027602984
- 24027602985
- 24027602986
- 24027602987
- 24027602988
- 24027602989
- 24027602990
- 24027602991
- 24027602992
- 24027602993
- 24027602994
- 24027602995
- 24027602996
- 24027602997
- 24027602998
- 24027602999
- 24027603000

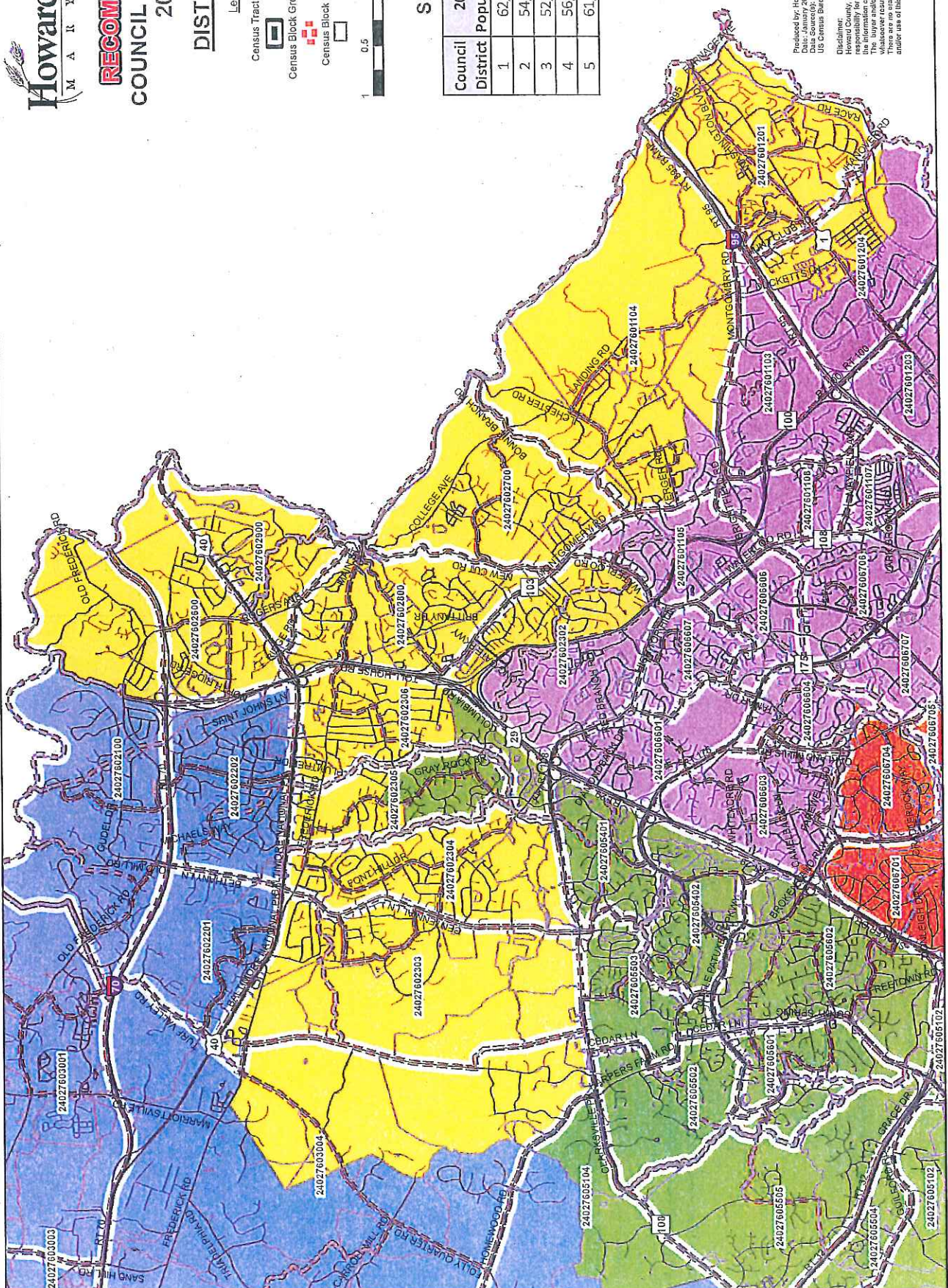
Census Block

- 24027602900
- 24027602901
- 24027602902
- 24027602903
- 24027602904
- 24027602905
- 24027602906
- 24027602907
- 24027602908
- 24027602909
- 24027602910
- 24027602911
- 24027602912
- 24027602913
- 24027602914
- 24027602915
- 24027602916
- 24027602917
- 24027602918
- 24027602919
- 24027602920
- 24027602921
- 24027602922
- 24027602923
- 24027602924
- 24027602925
- 24027602926
- 24027602927
- 24027602928
- 24027602929
- 24027602930
- 24027602931
- 24027602932
- 24027602933
- 24027602934
- 24027602935
- 24027602936
- 24027602937
- 24027602938
- 24027602939
- 24027602940
- 24027602941
- 24027602942
- 24027602943
- 24027602944
- 24027602945
- 24027602946
- 24027602947
- 24027602948
- 24027602949
- 24027602950
- 24027602951
- 24027602952
- 24027602953
- 24027602954
- 24027602955
- 24027602956
- 24027602957
- 24027602958
- 24027602959
- 24027602960
- 24027602961
- 24027602962
- 24027602963
- 24027602964
- 24027602965
- 24027602966
- 24027602967
- 24027602968
- 24027602969
- 24027602970
- 24027602971
- 24027602972
- 24027602973
- 24027602974
- 24027602975
- 24027602976
- 24027602977
- 24027602978
- 24027602979
- 24027602980
- 24027602981
- 24027602982
- 24027602983
- 24027602984
- 24027602985
- 24027602986
- 24027602987
- 24027602988
- 24027602989
- 24027602990
- 24027602991
- 24027602992
- 24027602993
- 24027602994
- 24027602995
- 24027602996
- 24027602997
- 24027602998
- 24027602999
- 24027603000

Scale: 0, 0.5, 1 Miles

Sigaty 3

Council District	2010 Population	Proposed Population
1	62,435	57,841
2	54,349	55,600
3	52,086	56,396
4	56,391	56,967
5	61,408	59,865



Produced by: Howard County GIS
 Data Sources: Howard County GIS,
 US Census Bureau

Disclaimer:
 Howard County, Maryland assumes no
 responsibility for the accuracy of the map or
 the information contained herein or derived therefrom,
 whatsoever (including from or arising out of the use of this map).
 There are no oral agreements or warranties relating to this sale
 and/or use of this map.

RECOMMENDED
COUNCIL DISTRICTS
2010

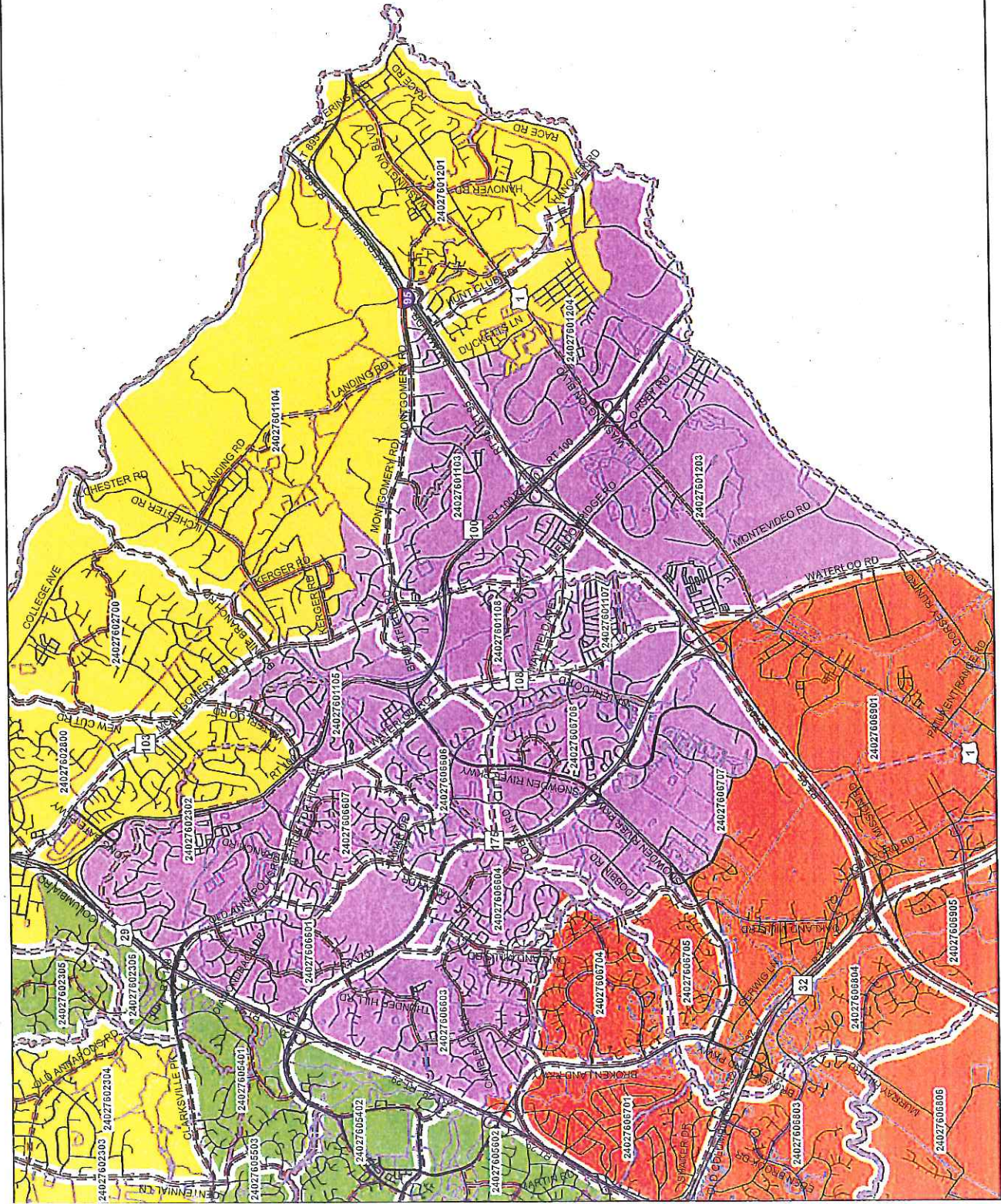
DISTRICT 2

- Legend**
- Council Districts
 - District 1 (Yellow)
 - District 2 (Purple)
 - District 3 (Green)
 - District 4 (Red)
 - District 5 (Blue)
 - Census Tract (Black outline)
 - Census Block Group (Red outline)
 - Census Block (White outline)



Sigaty 3

Council District	2010 Population	Proposed Population
1	62,435	57,841
2	54,349	55,600
3	52,086	56,396
4	56,391	56,967
5	61,408	59,865



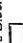
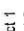
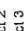
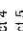




Produced by: Howard County GIS
Data Source(s): Howard County GIS,
US Census Bureau

Disclaimer:
Howard County, Maryland assumes no
responsibility for the accuracy of the map or
the information contained herein. The user
acknowledges that the use of this map and facilities
whatsoever resulting from or arising out of the use of this map,
including any errors, omissions, or inaccuracies, shall be the
sole and exclusive responsibility of the user.

RECOMMENDED
COUNCIL DISTRICTS
2010

DISTRICT 3

- Legend**
- Census Tract 
 - Census Block Group 
 - Census Block 
 - Council Districts
 - District 1 
 - District 2 
 - District 3 
 - District 4 
 - District 5 

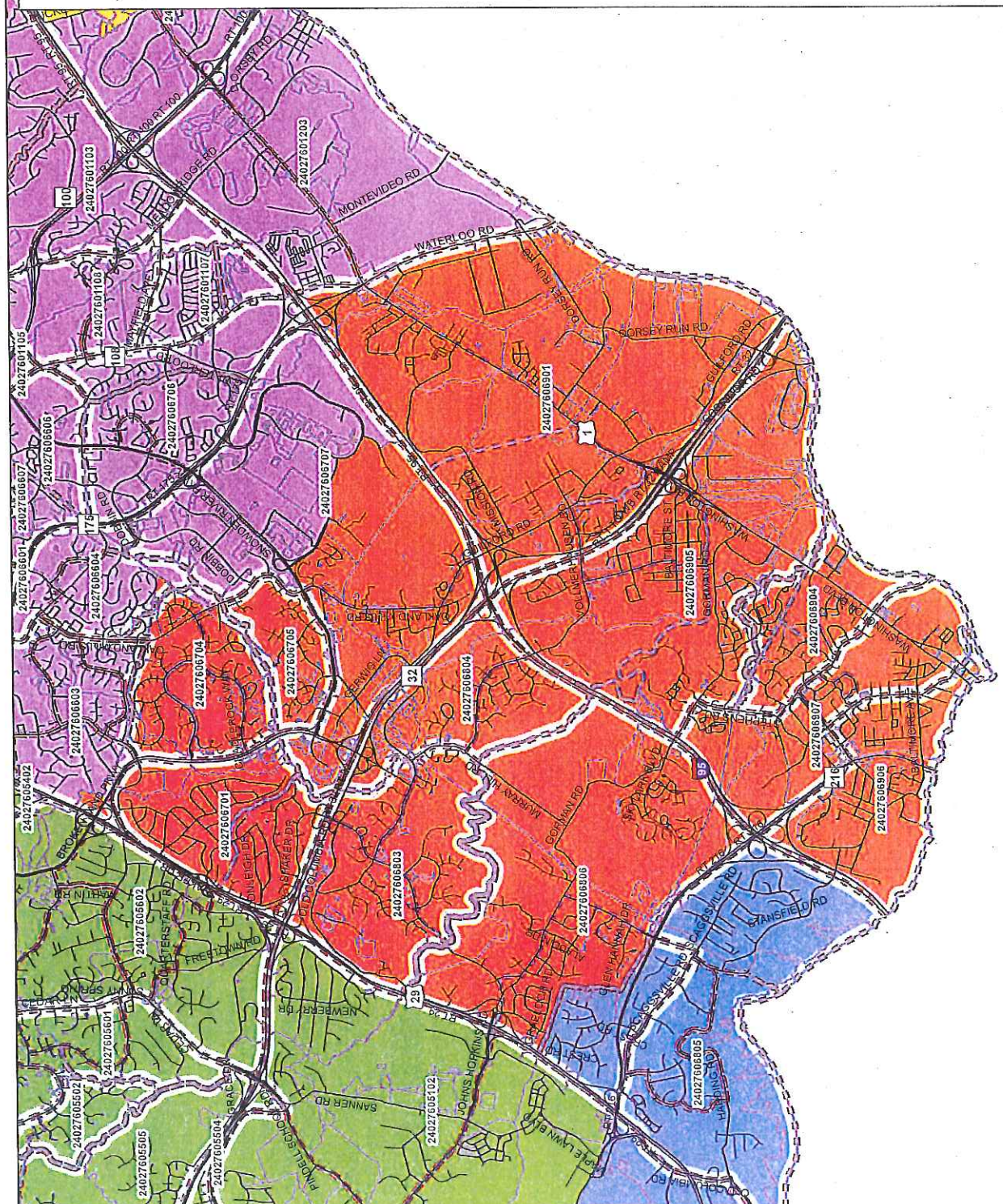


Sigaty 3

Council District	2010 Population	Proposed Population
1	62,435	57,841
2	54,349	55,600
3	52,086	56,396
4	56,391	56,967
5	61,408	59,865

Produced by: Howard County GIS
Date: January 2012
Data Source(s): Howard County GIS,
US Census Bureau

Disclaimer:
Howard County, Maryland assumes no responsibility for the accuracy or completeness of the information contained herein or derived therefrom. The buyer and/or user assumes all risks and liabilities whatsoever resulting from or arising out of the use of the information contained herein, including but not limited to, any and/or use of this map.



RECOMMENDED
COUNCIL DISTRICTS
2010

DISTRICT 4

- Legend**
- Census Tract
 - District 1
 - District 2
 - District 3
 - District 4
 - District 5
 - Census Block Group
 - District 1
 - District 2
 - District 3
 - District 4
 - District 5
 - Census Block
 - District 1
 - District 2
 - District 3
 - District 4
 - District 5

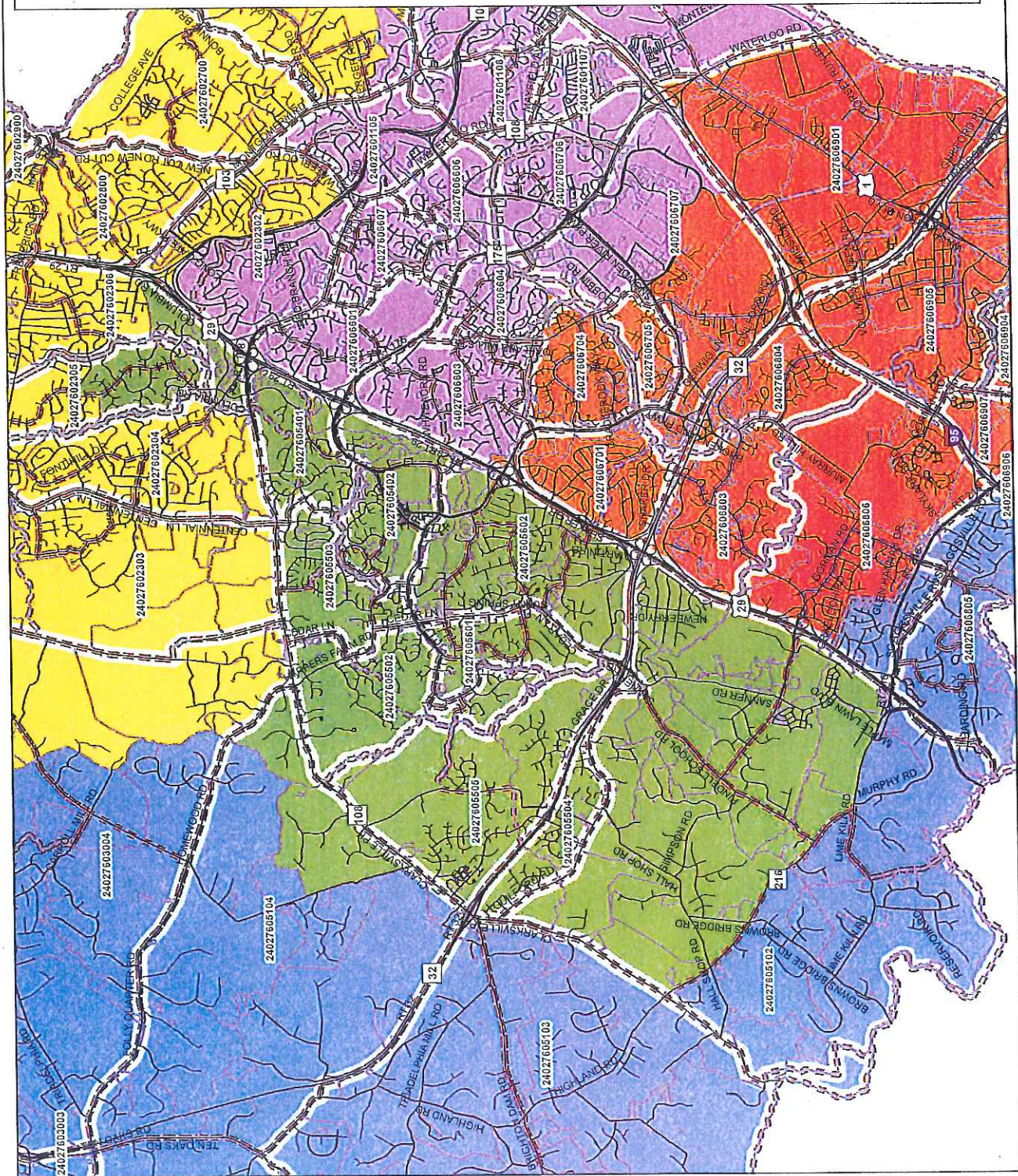


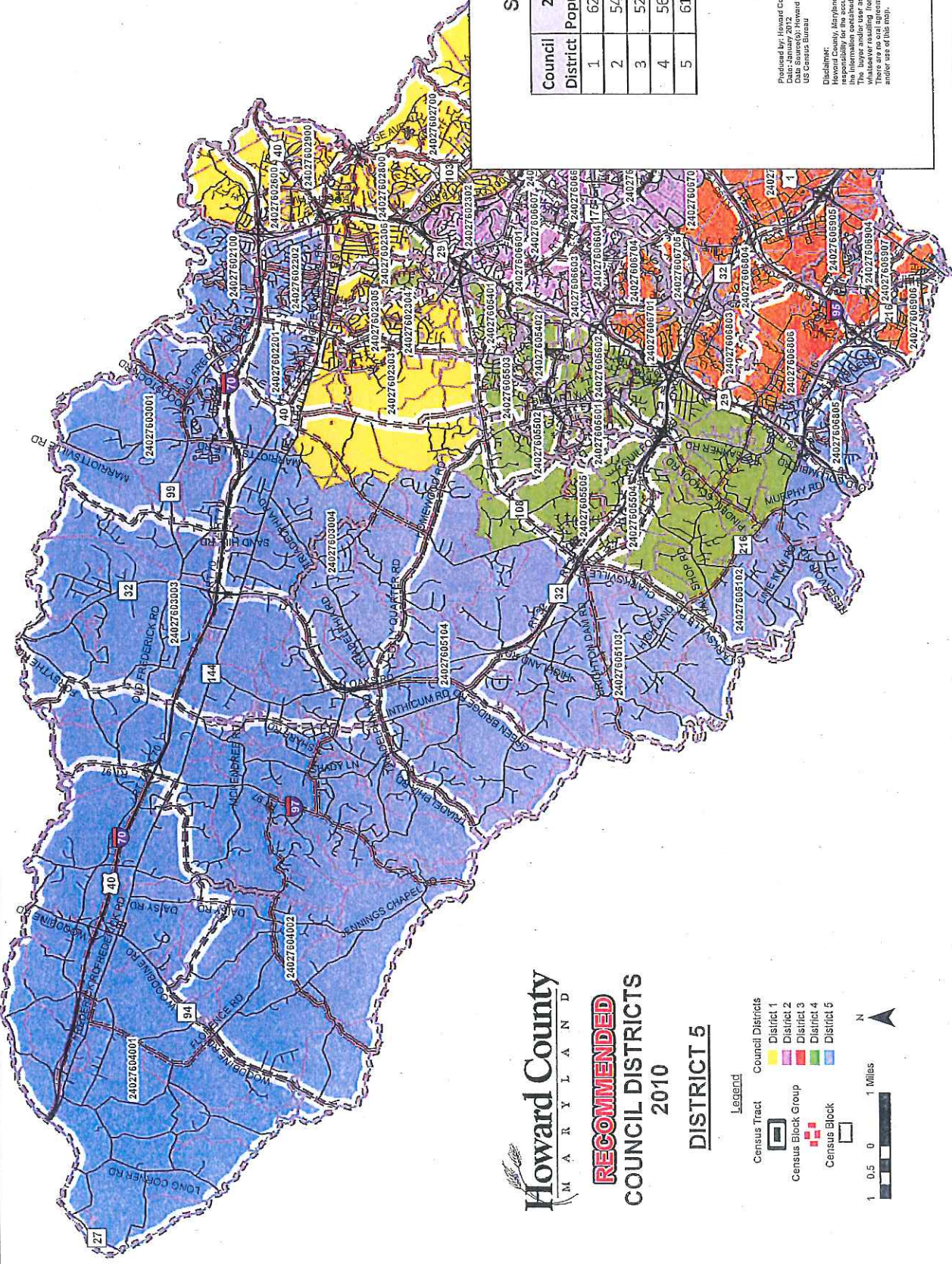
Stigaty 3

Council District	2010 Population	Proposed Population
1	62,435	57,841
2	54,349	55,600
3	52,086	56,396
4	56,391	56,967
5	61,403	59,865

Produced by: Howard County GIS
Date: January 2012
Prepared by: Howard County GIS
US Census Bureau

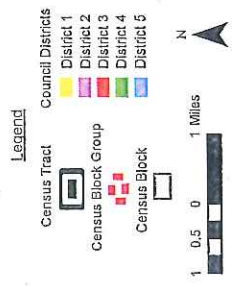
Disclaimer:
The information contained herein or derived therefrom, is provided as a service to the user and is not intended to constitute any form of insurance or other financial product. There are no oral agreements or warranties relating to this data and/or use of this map.





Howard County
 M A R Y L A N D
RECOMMENDED
COUNCIL DISTRICTS
 2010

DISTRICT 5



Sigaty 3

Council District	2010 Population	Proposed Population
1	62,435	57,841
2	54,349	55,600
3	52,086	56,396
4	56,391	56,967
5	61,408	59,865

Prepared by: Howard County GIS
 Date: 10/12/2010
 Data Source(s): Howard County GIS,
 US Census Bureau

Disclaimer:
 Howard County, Maryland assumes no
 responsibility for the accuracy of the map or
 the data used in the map. The user assumes
 all risks and liabilities, including
 whatsoever resulting from or arising out of the use of this map.
 There are no oral agreements or warranties relating to this data
 and/or use of this map.